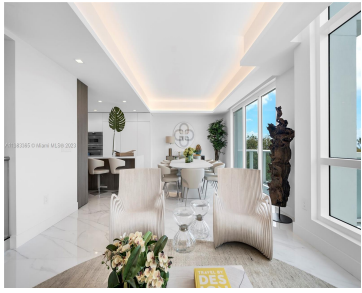


# 100 S POINTE DR TH-13 MIAMI BEACH FL 33139

<https://www.cays.com>



\$5,900,000



This brand-new redesigned townhouse boasts a spectacular layout w/4 levels of contemporary luxury at the Continuum. Enter via the 4th level greeted by spacious living & dining areas, access to a terrace w/partial ocean & city views, Spanish porcelain tile floors, custom millwork, & a sleek chef's kitchen w/top-of-the-line Thermador WIFI accessed appliances. A modern [...]

- 3 beds
- 4 baths
- Condominium
- Residential
- Active
- 2202 sq ft

## Basics

**Bathrooms Half:** 1

**Lot Size Units:** Square Feet

**Type:** Condominium

**Bedrooms:** 3 beds

**Area:** 2202 sq ft

**Bathrooms Full:** 3

**Category:** Residential

**Status:** Active

**Bathrooms:** 4 baths

**Year built:** 2003



---

## Property details

**Total Building Area:** 2202

**Subdivision Name:** CONTINUUM ON SOUTH BEACH

**Possession:** Closing & Funding

**Direction Faces:** East

**Parcel Number:** 02-42-03-262-0130

**Property Condition:** Updated/Remodeled

---

## Property Features

**Exterior Features:** Balcony,Tennis Court(s)

**Waterfront Features:** Ocean Access,Ocean Front

**Parking Features:**

Assigned,Detached,Garage,Two or More Spaces,Valet

**Appliances:** Built-In

Oven,Dryer,Dishwasher,Electric Range,Microwave,Refrigerator,Washer

**Construction Materials:** Block

**Cooling Y/N:** 1

**Flooring:** Other

**Garage Y/N:** 1

**Heating Y/N:** 1

**View:** Ocean

**Entry Level:** 1

**Patio and Porch Features:** Balcony,Open

**Stories Total:** 40

**Interior Features:** Built-in Features,Bedroom on Main Level,Living/Dining Room,Main Living Area Entry Level,Separate Shower

**Window Features:** Sliding

**Security Features:** Lobby Secured,Other,Smoke Detector(s)

**Association Amenities:**

Clubhouse,Fitness Center,Sauna,Spa/Hot Tub,Tennis Court(s),Trail(s),Elevator(s)

**Cooling:** Central Air,Electric

**Covered Spaces:** 2

**Garage Spaces:** 2

**Heating:** Central,Electric

**Pets Allowed:** Conditional,Yes

**View Y/N:** 1

**Entry Location:** 1

**Waterfront Y/N:** 1

**Utilities:** Cable Available

---

## Rooms & Units Description

**Unit Number:** TH-13



---

## Location Details

**County Or Parish:** Miami-Dade County

---

## Fees & Taxes

**Tax Annual Amount:**  
19581

**Tax Year:** 2022

**Tax Legal Description:**  
CONTINUUM ON SOUTH  
BEACH CONDO THE SOUTH  
TOWER UNIT TH-13 UNDIV  
0.340616% INT IN COMMON  
ELEMENTS OFF REC  
20817-0656 COC  
23371-2052 05 2005 1

**Association Fee:** 1920

**Association Fee  
Frequency:** Monthly

**Association Fee Includes:** Association  
Management,Amenities,Common Areas,Cable TV,Maintenance  
Grounds,Maintenance  
Structure,Parking,Pool(s),Sewer,Security,Trash,Water

---

## Miscellaneous

**Public Survey Township:** 2

**Public Survey  
Section:** 3

**Syndication Remarks:** This brand-new redesigned townhouse boasts a  
spectacular layout with 4 levels of contemporary luxury at the Continuum.

**Year Built  
Details:** Resale

**Virtual Tour URL:** <https://vimeo.com/825131498/02a0003a1d>

---

## Courtesy of

**Office Name:** Coldwell Banker Realty

