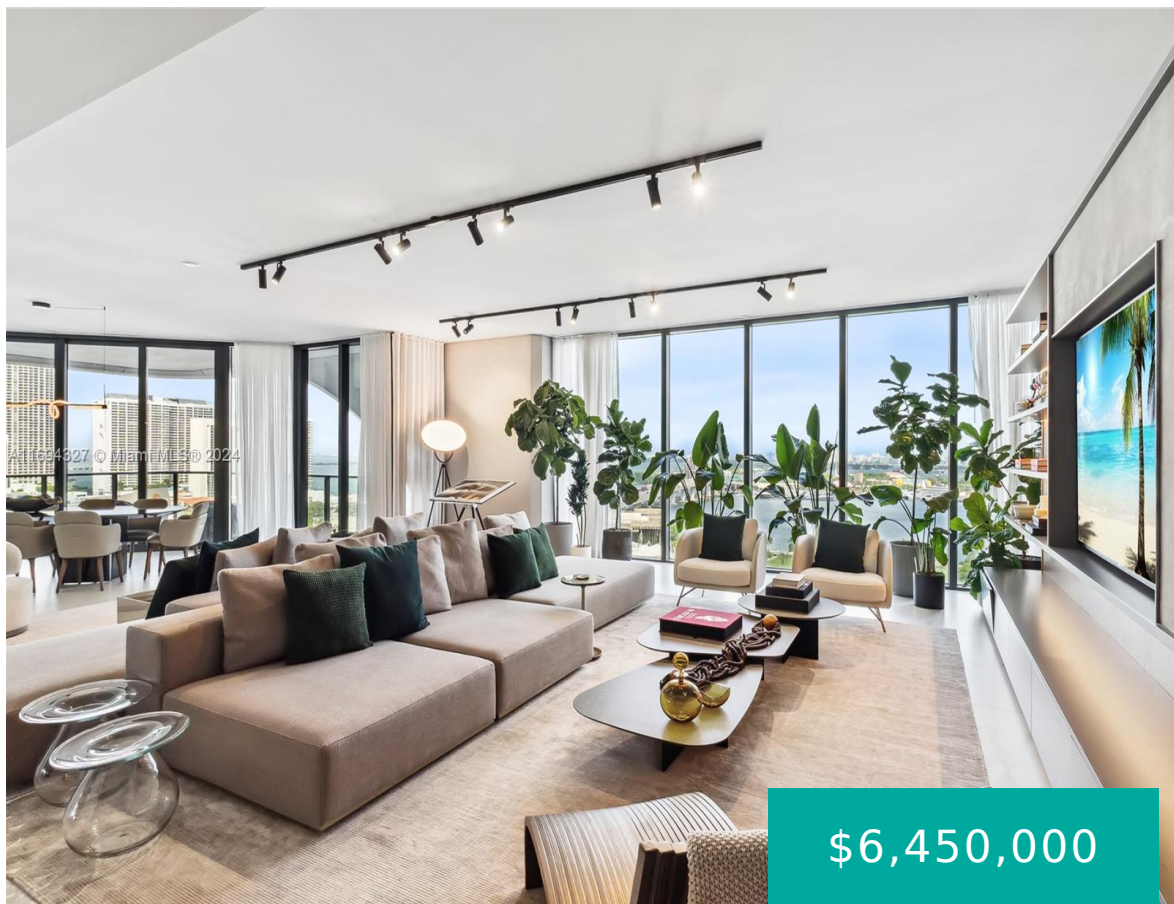


1000 BISCAYNE BLVD MIAMI FL 33132 1000 BISCAYNE BLVD 1902

<https://www.cays.com>



\$6,450,000



ONE THOUSAND MUSEUM CONDO UNIT 1902 UNDIV 1/99 INT IN COMMON ELEMENTS OFF REC 31421-0237 Introducing unit 1902 at One Thousand Museum by Zaha Hadid, the epitome of luxury living in Miami, where art and architecture seamlessly converge. Step into this amazing half-floor residence spanning an impressive 4,600 square feet. With 4 bedrooms, 5.5 bathrooms, [...]

- 4 beds
- 5, 6 baths
- Condominium, Residential
- Condominium, Residential
- Active
- 4600 sq ft

Basics



Bathrooms Half: 1

Category: Condominium, Residential

Type: Condominium, Residential **Status:** Active

Bedrooms: 4 beds

Bathrooms: 5, 6 baths

Half baths: 1 half bath

Floors: 62 floors

Area: 4600 sq ft

Year built: 2019

View: Bay,Ocean

Subdivision Name: ONE THOUSAND MUSEUM CONDO

County: Miami-Dade

Property details

Subdivision Name: ONE THOUSAND MUSEUM CONDO

Parcel Number: 33132

Property Features

Waterfront Features: Bayfront

Parking Features: Covered,TwoOrMoreSpaces

Cooling: CentralAir

Cooling Y/N: 1

Garage Y/N: 1

Heating: Central

Heating Y/N: 1

Pets Allowed: Conditional,Yes

View: Bay,Ocean

View Y/N: 1

Stories Total: 62

Rooms & Units Description

Unit Number: 1902

Location Details

County Or Parish: Miami-Dade



Building Details

Architectural Style: HighRise

Covered Spaces: 2

Floor covering: CeramicTile, Tile

Construction Materials: Block

Garage Spaces: 2

Amenities & Features

Parking Features: Covered,TwoOrMoreSpaces

Patio & Porch Features: Balcony,Open

Waterfront Features: Bayfront

Cooling: CentralAir

Furnished: Furnished

Interior Features:

BuiltInFeatures,EntranceFoyer,Elevator,KitchenIsland,LivingDiningRoom,Bar,WalkInClosets

Security Features: DoorMan

Association Amenities:

BusinessCenter,FitnessCenter,Playground,Elevators

Window Features: Blinds,Drapes

Exterior Features: Balcony,SecurityHighImpactDoors

Heating: Central

Appliances:

Dryer,Dishwasher,ElectricRange,Disposal,Refrigerator,Washer

Expenses, Fees & Taxes

Association Fee: \$8,380

Tax Annual Amount: \$103,534

Tax Year: 2024

Fees & Taxes

Association Fee: 8380

Miscellaneous

Association Fee Frequency: Monthly **List Office Name:** Douglas Elliman

Listing Terms: Cash,Conventional

Miscellaneous



Above Grade Finished Area: Miami, FL

Courtesy of

Office Name: Douglas Elliman

