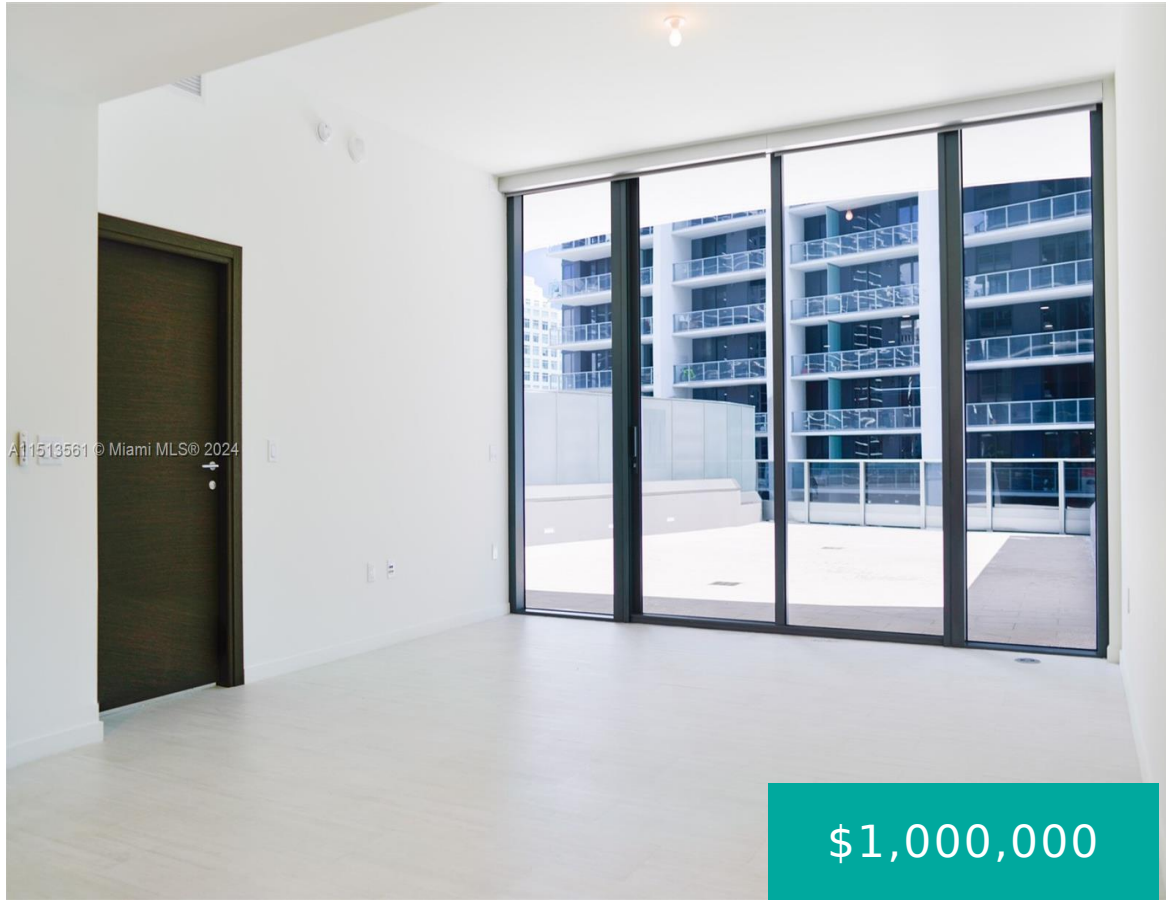


1000 BRICKELL PLAZA 1807 MIAMI FL 33131

<https://www.cays.com>



\$1,000,000



One of the most unique units in the Flatiron, this unit has 12 ft. ceilings, and a massive, oversized balcony, and a den. The unit is a great opportunity for an investor, as its tenant occupied until December 2024.

- 1 bed
- 2 baths
- Condominium
- Residential
- Active
- 1034 sq ft

Basics

Bathrooms Full: 2

Category: Residential

Status: Active

Bathrooms: 2 baths

Year built: 2018

Lot Size Units: Square Feet

Type: Condominium

Bedrooms: 1 bed

Area: 1034 sq ft



Property details

Direction Faces: West

Parcel Number: 01-41-00-000-4107

Subdivision Name: Brickell Flatiron

Possession: Subject To Tenant Rights

Property Features

Exterior Features: Balcony,Deck

Pool Features: Association

Security Features: Door Man,Elevator Secured,Security Guard

Association Amenities: Billiard Room,Business Center,Fitness Center,Other,Pool,Sauna,Spa/Hot Tub

Cooling: Central Air

Covered Spaces: 1

Furnished: Unfurnished

Garage Y/N: 1

Heating Y/N: 1

View: Other

Entry Location: 18

Property Attached Y/N: 1

Interior Features: Bedroom on Main Level,Kitchen Island,Walk-In Closet(s)

Parking Features: One Space,Valet

Appliances: Dryer,Dishwasher,Electric Range,Other,Refrigerator

Construction Materials: Block

Cooling Y/N: 1

Flooring: Ceramic Tile

Garage Spaces: 1

Heating: Central

Pets Allowed: Conditional,Yes

Entry Level: 18

Patio and Porch Features: Balcony,Deck,Open

Stories Total: 64

Rooms & Units Description

Unit Number: 1807

Location Details

County Or Parish: Miami-Dade County



Fees & Taxes

Tax Annual Amount: 13463

Tax Year: 2023

Tax Legal Description: Brickell Flatiron condo unit 1807

Association Fee: 1574

Association Fee Frequency: Monthly

Association Fee Includes: Amenities

Miscellaneous

Public Survey Township: 1

Syndication Remarks: .

Year Built Details: New Construction

Virtual Tour URL: <https://www.propertypanorama.com/instaview/mia/A11513561>

Courtesy of

Office Name: IPM Worldwide Properties

