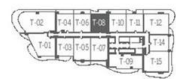
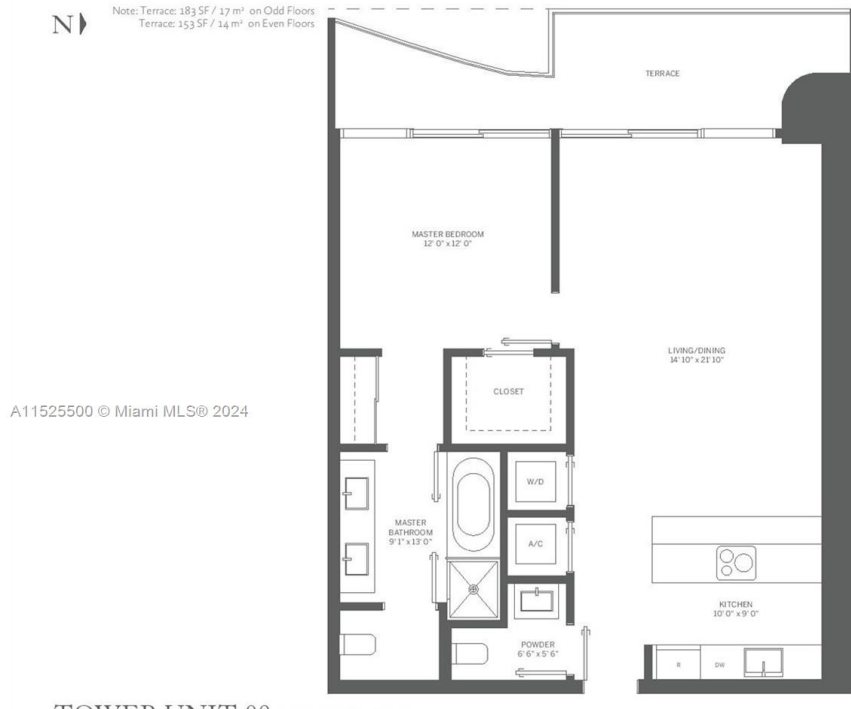


1000 BRICKELL PLAZA MIAMI FL 33131 1000 BRICKELL PLAZA 2808

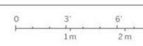
<https://www.cays.com>



A11525500 © Miami MLS® 2024

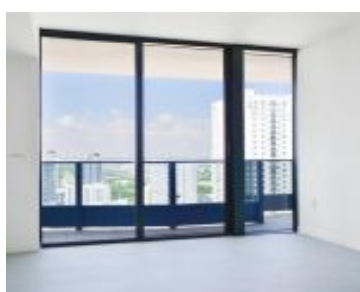
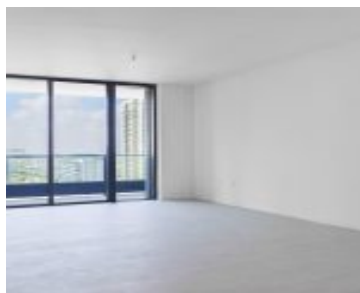
TOWER UNIT 08 1 BEDROOM / 1.5 BATH

INTERIOR: 906 SF / 84 m² TERRACE: 353 SF / 14 m² TOTAL: 1,059 SF / 98 m²



Standard dimensions are measured to the exterior boundaries of the exterior walls and the centerline of interior demising walls and in fact vary from the dimensions that would be determined by using the description and definition of the perimeter walls and excludes interior structural components. For your reference, the area of the Unit, determined in accordance with those defined unit boundaries, is 899 SF. Note that measurements of rooms set forth on this floor plan are not to be used for any contract. Accordingly, the area of the actual room will typically be smaller than the product obtained by multiplying the stated length times width. All dimensions are approximate and may vary with actual construction, and all floor

\$900,000



Brickell Flatiron condo unit 2808

- 1 bed
- 1, 2 bath
- Condominium, Residential
- Condominium, Residential
- Active
- 906 sq ft

Basics



Bathrooms Half: 1

Type: Condominium, Residential

Bedrooms: 1 bed

Half baths: 1 half bath

Area: 906 sq ft

View: City

County: Miami-Dade

Category: Condominium, Residential

Status: Active

Bathrooms: 1, 2 bath

Floors: 64 floors

Year built: 2019

Subdivision Name: Brickell Flatiron

Property details

Subdivision Name: Brickell Flatiron

Parcel Number: 33131

Property Features

Parking Features: Valet

Cooling Y/N: 1

Heating: Central

Pets Allowed: Conditional, Yes

Stories Total: 64

Cooling: Central Air

Garage Y/N: 1

Heating Y/N: 1

View: City

Rooms & Units Description

Unit Number: 2808

Location Details

County Or Parish: Miami-Dade



Building Details

Architectural Style: HighRise

Garage Spaces: 1

Covered Spaces: 1

Floor covering: CeramicTile

Amenities & Features

Pool Features: Heated

Security Features:

ElevatorSecured,SecuredGarageParking,SecurityGuard

Cooling: CentralAir

Furnished: Unfurnished

Interior Features: BedroomOnMainLevel,Bar

Parking Features: Valet

Association Amenities:

BilliardRoom,BusinessCenter,Clubhouse,FitnessCenter,Playground,Pool,Sauna,SpaHotTub

Exterior Features: Other

Heating: Central

Appliances: Other

Expenses, Fees & Taxes

Association Fee: \$1,273

Tax Year: 2024

Tax Annual Amount: \$10,335

Fees & Taxes

Association Fee: 1273

Miscellaneous

Association Fee Frequency: Monthly **List Office Name:** IPM Worldwide Properties

Listing Terms: Cash,Conventional

Direction Faces: West

Miscellaneous



Above Grade **Virtual Tour URL:**
Finished Area: <https://www.propertypanorama.com/instaview/mia/A11525500>
Miami, FL

Courtesy of

Office Name: IPM Worldwide Properties

