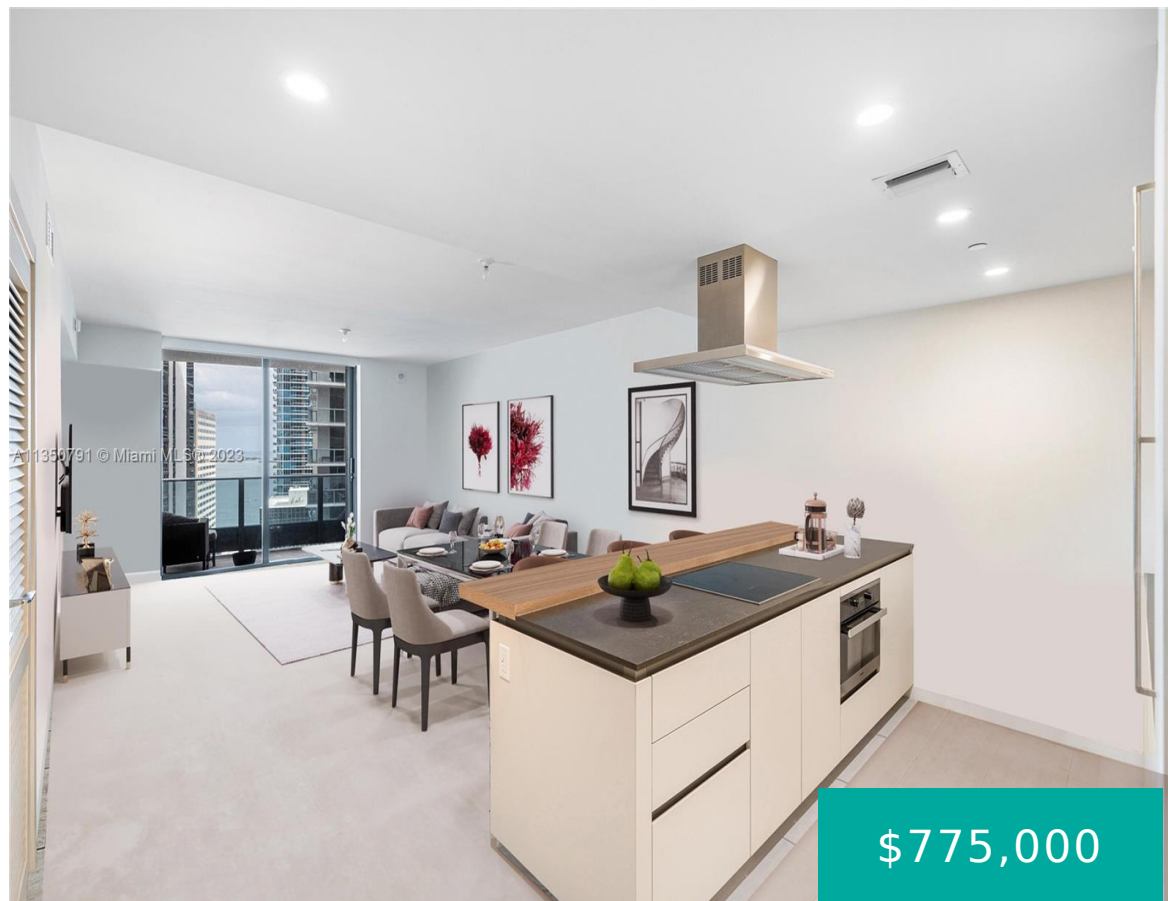
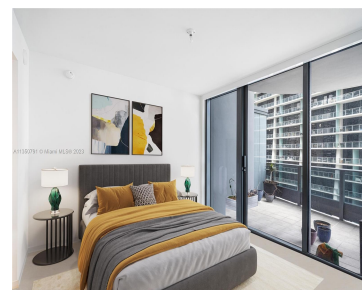
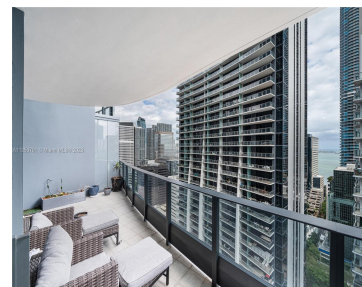
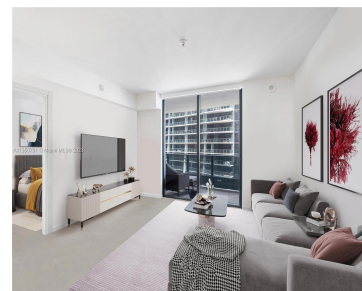


1000 BRICKELL PLZ 3003 MIAMI FL 33131

<https://www.cays.com>



\$775,000



Brickell Flatiron offers ultra luxury in the heart of Brickell! Soaring 64 stories with amazing views of the city and water, this iconic tower offers the best location, finishes and amenities on Brickell. Including a rooftop pool located on the 64th-floor with 360-degree unobstructed water and city views, a spa & fitness center with steam [...]

- 1 bed
- 2 baths
- Condominium
- Residential
- Active
- 829 sq ft

Basics

Bathrooms Half: 1

Lot Size Units: Square Feet

Type: Condominium

Bedrooms: 1 bed

Area: 829 sq ft

Bathrooms Full: 1

Category: Residential

Status: Active

Bathrooms: 2 baths

Year built: 2019



Property details

Total Building Area: 829

Subdivision Name: BRICKELL FLATIRON CONDO

Parcel Number: 01-41-39-164-0780 **Possession:** Close Of Escrow

Property Features

Exterior Features: Balcony,Security/High Impact Doors

Window Features: Impact Glass

Parking Features: Assigned,Covered,One Space

Appliances: Dryer,Dishwasher,Electric Range,Disposal,Microwave,Refrigerator,Washer

Association Amenities: Billiard Room,Business Center,Clubhouse,Fitness Center,Barbecue,Other,Picnic Area,Playground,Pool,Sauna,Spa/Hot Tub,Trash

Cooling: Central Air

Covered Spaces: 1

Garage Spaces: 1

Heating: Central

Pets Allowed: Conditional,Yes

View Y/N: 1

Entry Location: 30

Property Attached Y/N: 1

Interior Features: Bedroom on Main Level,Closet Cabinetry,Dual Sinks,Separate Shower,Walk-In Closet(s)

Pool Features: Heated

Security Features: Door Man,Elevator Secured,Secured Garage/Parking

Architectural Style: High Rise

Construction Materials: Block

Cooling Y/N: 1

Flooring: Ceramic Tile

Garage Y/N: 1

Heating Y/N: 1

View: Bay,City

Entry Level: 30

Patio and Porch Features: Balcony,Open

Stories Total: 64

Rooms & Units Description

Unit Number: 3003



Location Details

County Or Parish: Miami-Dade County

Fees & Taxes

Tax Annual Amount: 9043

Tax Year: 2022

Tax Legal Description: BRICKELL
FLATIRON CONDO UNIT 3003 UNDIV
0.001177% INT IN COMMON ELEMENTS OFF
REC 29397-2321

Association Fee: 1007

Association Fee Frequency: Monthly

Association Fee Includes: Amenities,Common
Areas,Maintenance Structure,Sewer,Trash,Water

Miscellaneous

Public Survey Township: 1

**Public
Survey
Section:** 39

Syndication Remarks: Brickell Flatiron offers ultra luxury in the heart of
Brickell!

**Year Built
Details:**
Resale

Virtual Tour URL:

<https://www.propertypanorama.com/instaview/mia/A11350791>

Courtesy of

Office Name: Douglas Elliman

