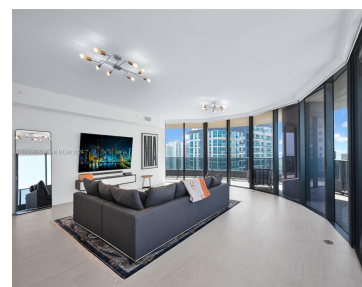


1000 BRICKELL PLZ 4202 MIAMI FL 33131

<https://www.cays.com>



Spectacular upgraded high floor corner unit featuring 3 Bedroom 3.5 Bath in Brickell Flatiron. This desirable floorplan features 9 Foot Ceilings and amazing wrap around balcony with endless views, Miele appliances, Nest thermostat, Italian kitchen & doors, Custom closets & automatic window treatments. Includes 2 dedicated parking spaces along with 1 valet space. Building amenities [...]

- 3 beds
- 4 baths
- Condominium
- Residential
- Active
- 1909 sq ft

Basics

Bathrooms Half: 1

Lot Size Units: Square Feet

Type: Condominium

Bedrooms: 3 beds

Area: 1909 sq ft

Bathrooms Full: 3

Category: Residential

Status: Active

Bathrooms: 4 baths

Year built: 2019



Property details

Total Building Area: 1909

Subdivision Name: BRICKELL FLATIRON CONDO

Possession: Close Of Escrow

Disclosures: Owner Is Listing Agent

Parcel Number: 01-41-39-164-0580

Property Features

Exterior Features: Balcony

Window Features: Blinds, Impact Glass

Parking Features: Two or More Spaces, Valet

Appliances: Built-In Oven, Dryer, Dishwasher, Electric Range, Microwave, Refrigerator, Washer

Construction Materials: Pre-Cast Concrete

Cooling Y/N: 1

Flooring: Tile

Garage Y/N: 1

Heating Y/N: 1

View: Bay, City

Entry Level: 15

Patio and Porch Features: Balcony, Open

Stories Total: 64

Interior Features: Built-in Features, Bedroom on Main Level, Closet Cabinetry, Dual Sinks, Kitchen Island, Living/Dining Room, Walk-In Closet(s), Elevator

Pool Features: Association, Heated

Security Features: Closed Circuit Camera(s), Door Man, Elevator Secured, Lobby Secured, Security Guard, Fire Sprinkler System

Association Amenities: Billiard Room, Bike Storage, Clubhouse, Fitness Center, Playground, Pool, Trash, Elevator(s)

Cooling: Central Air

Covered Spaces: 3

Garage Spaces: 3

Heating: Central

Pets Allowed: Dogs OK, Yes

View Y/N: 1

Entry Location: 15

Property Attached Y/N: 1

Utilities: Cable Available

Rooms & Units Description

Unit Number: 4202

Total Rooms: 1



Location Details

County Or Parish: Miami-Dade County

Fees & Taxes

Tax Annual Amount: 28255

Tax Year: 2023

Tax Legal Description: BRICKELL
FLATIRON CONDO UNIT 4202 UNDIV
0.002711% INT IN COMMON ELEMENTS
OFF REC 29397-2321

Association Fee: 2907

Association Fee Frequency: Monthly

Association Fee Includes: Amenities,Common
Areas,Cable TV,Hot Water,Maintenance
Grounds,Pool(s),Reserve Fund,Security,Trash,Water

Miscellaneous

Public Survey Township: 1

**Public Survey
Section:** 39

Syndication Remarks: Spectacular upgraded high floor corner unit featuring
3 Bedroom 3.5 Bath in Brickell Flatiron.

**Year Built
Details:** New
Construction

Virtual Tour URL:

<https://www.propertypanorama.com/instaview/mia/A11530845>

Courtesy of

Office Name: City Native LLC

