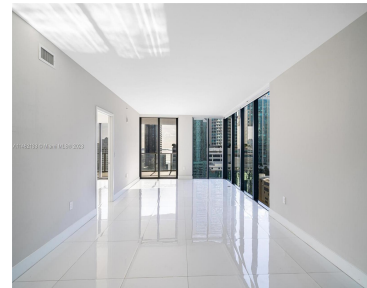
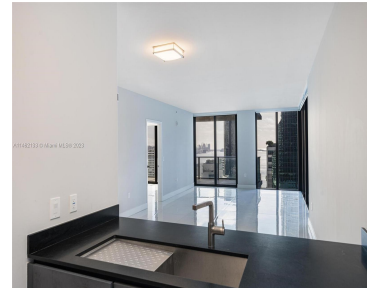


# 1010 BRICKELL AVE 1905 MIAMI FL 33131

<https://www.cays.com>



\$1,445,000



Desired corner unit with views of the Miami skyline and Biscayne Bay. This spacious 3/3 + den which can be converted into a 4th bedroom, has floor to ceiling windows throughout. A private elevator takes you directly to your unit. This luxury building has 2 floors of amenities including a rooftop pool, outdoor theater, squash [...]

- 3 beds
- 3 baths
- Condominium
- Residential
- Active
- 1778 sq ft

## Basics

**Bathrooms Full:** 3

**Category:** Residential

**Status:** Active

**Bathrooms:** 3 baths

**Year built:** 2017

**Lot Size Units:** Square Feet

**Type:** Condominium

**Bedrooms:** 3 beds

**Area:** 1778 sq ft



---

## Property details

**Total Building Area:** 1778

**Subdivision Name:** 1010 BRICKELL CONDO

**Parcel Number:** 01-41-38-158-1460

**Possession:** Closing & Funding

---

## Property Features

**Exterior Features:** Balcony,Security/High Impact Doors

**Interior Features:** Bedroom on Main Level,First Floor Entry,Walk-In Closet(s),Elevator

**Window Features:** Impact Glass

**Pool Features:** Association

**Parking Features:** Two or More Spaces,Valet

**Security Features:** Elevator Secured,Secured Garage/Parking,Lobby Secured,Security Guard

**Appliances:** Dryer,Dishwasher,Electric Range,Microwave,Refrigerator,Self Cleaning Oven,Washer

**Architectural Style:** High Rise

**Association Amenities:** Basketball Court,Bike Storage,Clubhouse,Community Kitchen,Fitness Center,Barbecue,Picnic Area,Playground,Pool,Sauna,Spa/Hot Tub,Trail(s)

**Construction Materials:** Block

**Cooling:** Central Air

**Cooling Y/N:** 1

**Covered Spaces:** 2

**Flooring:** Ceramic Tile

**Garage Spaces:** 2

**Garage Y/N:** 1

**Heating:** Central

**Heating Y/N:** 1

**Pets Allowed:** Conditional,Yes

**View:** Bay,City,Water

**View Y/N:** 1

**Entry Level:** 19

**Entry Location:** 19

**Patio and Porch Features:** Balcony,Open

**Property Attached Y/N:** 1

**Stories Total:** 50

---

## Rooms & Units Description

**Unit Number:** 1905



---

## Location Details

**County Or Parish:** Miami-Dade County

---

## Fees & Taxes

**Tax Annual Amount:** 14474

**Tax Year:** 2022

**Tax Legal Description:** 1010 BRICKELL CONDO UNIT  
1905 UNDIV 0.386311% INT IN COMMON ELEMENTS OFF  
REC 29021-1917

**Association Fee:** 1955

**Association Fee Frequency:** Monthly

**Association Fee Includes:**  
Amenities,Cable TV,Internet

---

## Miscellaneous

**Public Survey Township:** 1

**Public  
Survey  
Section:** 38

**Syndication Remarks:** Luxurious corner unit, featuring 3 beds + Den, 3 baths,  
and private elevator with 2 separate entrances.

**Year Built  
Details:**  
Resale

**Virtual Tour URL:**

<https://www.propertypanorama.com/instaview/mia/A11462133>

---

## Courtesy of

**Office Name:** Compass Florida, LLC

