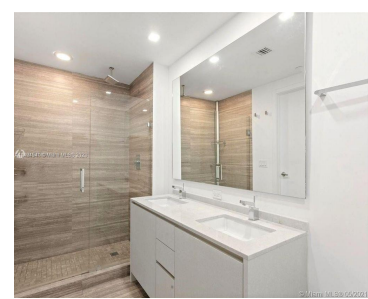
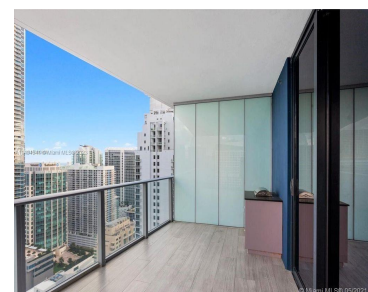
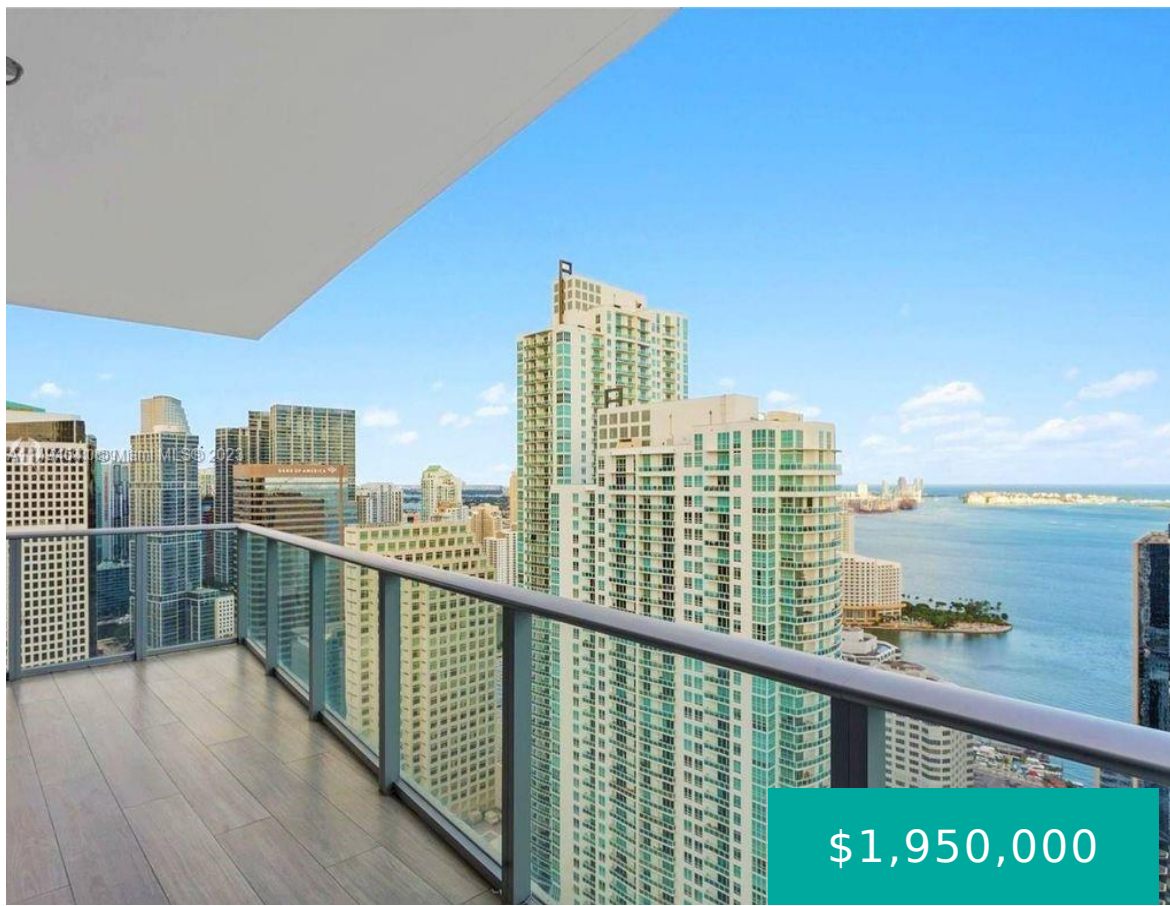


1010 BRICKELL AVE 3401 MIAMI FL 33131

<https://www.cays.com>



High floor and spacious corner unit, with 3B plus Den and private elevator. with 180 degrees of amazing views to Brickell & Downtown skylines. The balcony is ample and comes with bbq/summer kitchen. Most spectacular amenities 2 complete floors of entertainment, Indoor heated pool with retractable glass, parent/child pairing wristband system, state of the art [...]

- 3 beds
- 3 baths
- Condominium
- Residential
- Active
- 1753 sq ft

Basics

Bathrooms Full: 3

Category: Residential

Status: Active

Bathrooms: 3 baths

Year built: 2017

Lot Size Units: Square Feet

Type: Condominium

Bedrooms: 3 beds

Area: 1753 sq ft



Property details

Total Building Area: 1753

Subdivision Name: 1010 BRICKELL CONDO

Parcel Number: 01-41-38-158-0210

Possession: Closing & Funding

Property Features

Exterior Features: Balcony

Interior Features: Built-in Features, Bedroom on Main Level, Closet Cabinetry

Window Features: Blinds, Impact Glass

Parking Features: Assigned, Attached, Garage, One Space

Security Features: Door Man, Elevator Secured, Key Card Entry

Appliances: Dishwasher

Architectural Style: High Rise

Association Amenities: Basketball Court, Billiard Room, Business Center, Clubhouse, Fitness Center, Trail(s), Elevator(s)

Construction Materials: Block

Cooling: Central Air

Cooling Y/N: 1

Covered Spaces: 2

Flooring: Ceramic Tile

Furnished: Unfurnished

Garage Spaces: 2

Garage Y/N: 1

Heating: Electric

Heating Y/N: 1

Pets Allowed: Size Limit, Yes

View: Bay

View Y/N: 1

Entry Level: 34

Entry Location: 34

Patio and Porch Features: Balcony, Open

Property Attached Y/N: 1

Attached Garage Y/N: 1

Stories Total: 50

Utilities: Cable Available

Rooms & Units Description

Unit Number: 3401



Location Details

County Or Parish: Miami-Dade County

Fees & Taxes

Tax Annual Amount: 21924

Tax Year: 2022

Tax Legal Description: 1010 BRICKELL
CONDO UNIT 3401 UNDIV 0.380879% INT
IN COMMON ELEMENTS OFF REC
29021-1917

Association Fee: 1966

Association Fee Frequency: Monthly

Association Fee Includes: Amenities,Cable
TV,Insurance,Maintenance
Structure,Pool(s),Recreation
Facilities,Sewer,Trash,Water

Miscellaneous

Public Survey Township: 1

**Public Survey
Section:** 38

Syndication Remarks: High floor and spacious corner unit, with 3B plus Den
and private elevator. with 180 degrees of amazing views to Brickell &
Downtown skylines.

**Year Built
Details:** Resale

Virtual Tour URL: <https://www.youtube.com/watch?v=pQKk4cUPij8>

Courtesy of

Office Name: Coldwell Banker Realty

