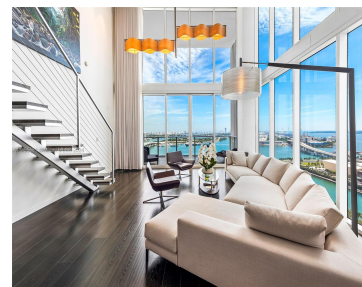
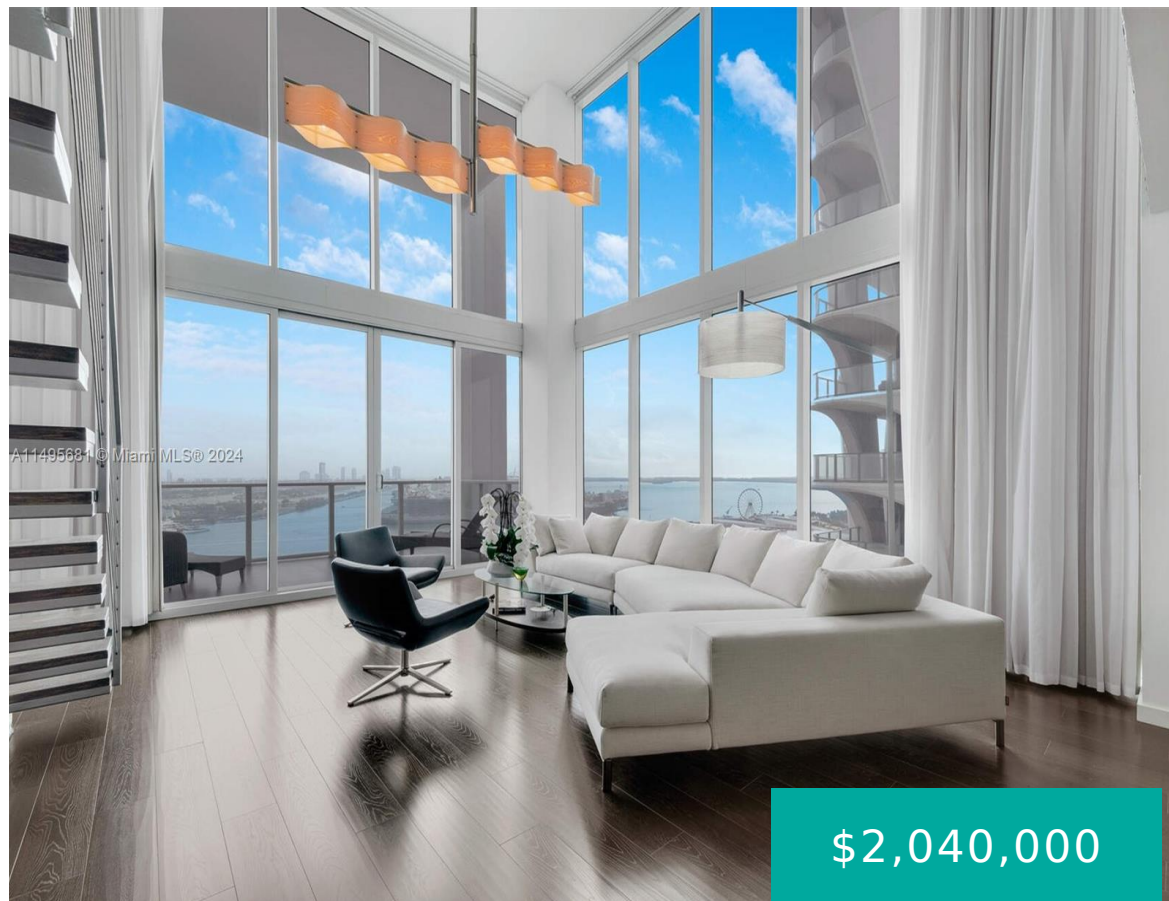


# 1040 BISCAYNE BLVD 2501 MIAMI FL 33132

<https://www.cays.com>



Meticulously appointed South East Corner, 2 story condo with 20 Ft Floor to ceiling glass walls. Open floor plan for a lofty modern feel with attention to design. Smart home technology and slate covered walls create a unique atmosphere. Designed by Chad Oppenheim, overlooking Biscayne Bay with dramatic panoramic views of the city and the [...]

- 2 beds
- 2 baths
- Condominium
- Residential
- Active
- 1735 sq ft

## Basics

**Bathrooms Full:** 2

**Category:** Residential

**Status:** Active

**Bathrooms:** 2 baths

**Year built:** 2007

**Lot Size Units:** Square Feet

**Type:** Condominium

**Bedrooms:** 2 beds

**Area:** 1735 sq ft



---

## Property details

**Total Building Area:** 1735

**Subdivision Name:** TEN MUSEUM PK RESIDENTIAL

**Parcel Number:** 01-32-31-062-0080 **Possession:** Closing & Funding

---

## Property Features

**Exterior Features:** Balcony, Security/High Impact Doors

**Interior Features:** Bidet, Built-in Features, Bedroom on Main Level, Closet Cabinetry, Dual Sinks, Entrance Foyer, Eat-in Kitchen, Family/Dining Room, Kitchen Island, Living/Dining Room, Pantry, Sitting Area in Primary, Walk-In Closet(s), Elevator

**Laundry Features:** Washer Hookup, Dryer Hookup

**Waterfront Features:** Bay Front, Intracoastal Access

**Window Features:** Impact Glass

**Pool Features:** Association, Heated

**Parking Features:** One Space

**Security Features:** Door Man, Elevator Secured, Security Guard

**Appliances:** Dishwasher, Electric Range, Microwave, Self Cleaning Oven, Washer

**Architectural Style:** High Rise

**Association Amenities:** Clubhouse, Fitness Center, Pool, Sauna, Spa/Hot Tub, Storage, Elevator(s)

**Construction Materials:** Block

**Cooling:** Central Air, Electric

**Cooling Y/N:** 1

**Covered Spaces:** 2

**Flooring:** Ceramic Tile

**Garage Spaces:** 2

**Garage Y/N:** 1

**Heating:** Central, Electric

**Heating Y/N:** 1

**Pets Allowed:** Conditional, Yes

**View:** Bay, Intercoastal, Ocean, Water

**View Y/N:** 1

**Entry Level:** 25

**Entry Location:** 25

**Patio and Porch Features:** Balcony, Open

**Property Attached Y/N:** 1

**Waterfront Y/N:** 1

**Stories Total:** 50

**Utilities:** Cable Available

---

## Rooms & Units Description



**Unit Number:** 2501

---

## Location Details

**County Or Parish:** Miami-Dade County

---

## Fees & Taxes

**Tax Annual Amount:** 13503

**Tax Year:** 2023

**Tax Legal Description:** TEN  
MUSEUM PK RESIDENTIAL CONDO  
UNIT 2501 UNDIV 0.006323% INT  
IN COMMON ELEMENTS OFF REC  
25712-1549 COC 25827-0287 07  
2007 1

**Association Fee:** 2271

**Association Fee Frequency:**  
Monthly

**Association Fee Includes:** Amenities,Common  
Areas,Cable TV,Hot Water,Insurance,Internet,Maintenance  
Structure,Parking,Pest  
Control,Pool(s),Sewer,Security,Trash,Water

---

## Miscellaneous

**Public Survey Township:** 1

**Public  
Survey  
Section:** 31

**Syndication Remarks:** Renovated 2 story, 2 beds 2 baths glass walls with panoramic views. Waterfront downtown miami across from arena, Arsht center and parks.

**Year Built  
Details:**  
Resale

**Virtual Tour URL:** <https://www.propertypanorama.com/instaview/mia/A11495681>

---

## Courtesy of

**Office Name:** Official

