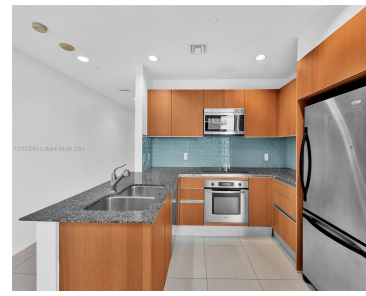
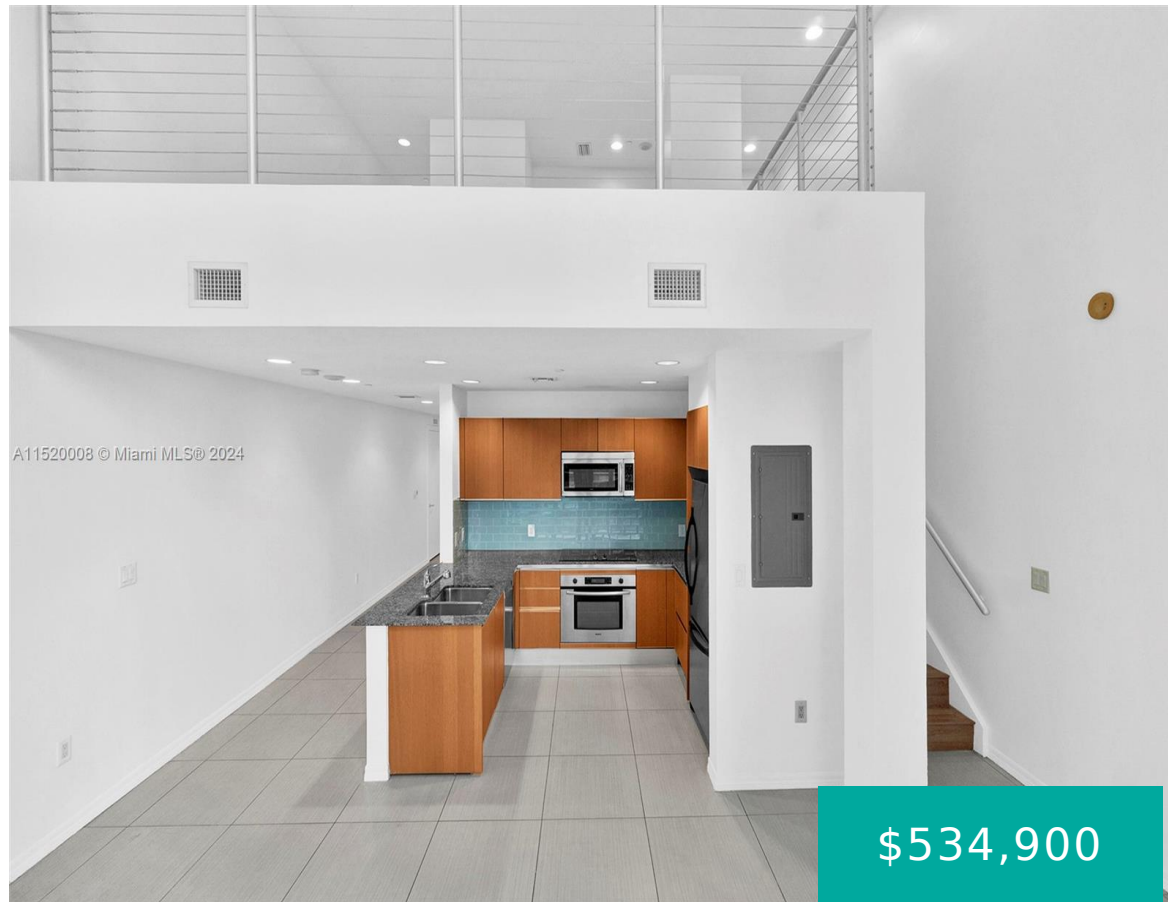


1050 BRICKELL AVE 2418 MIAMI FL 33131

<https://www.cays.com>



\$534,900

Gorgeous 1,128 sq ft Brickell Loft on the 24th floor. Features loft-style bedroom on the 2nd floor with 1 full bath & 1 half bath on the 1st floor. Open floor plan has high ceilings & large windows facing West providing a beautiful view of Brickell skyline & sunrises, while the balcony showcases Brickell lights [...]

- 1 bed
- 2 baths
- Condominium
- Residential
- Active
- 1128 sq ft

Basics

Bathrooms Half: 1

Lot Size Units: Square Feet

Type: Condominium

Bedrooms: 1 bed

Area: 1128 sq ft

Bathrooms Full: 1

Category: Residential

Status: Active

Bathrooms: 2 baths

Year built: 2008



Property details

Total Building Area: 1128

Direction Faces: West

Disclosures: Seller Disclosure

Subdivision Name: 1060 BRICKELL CONDO

Parcel Number: 01-41-38-134-5210 **Possession:** Closing & Funding,Close Of Escrow

Living Area Source: Plans

Property Features

Exterior Features: Balcony

Window Features: Blinds

Parking Features: Assigned,Attached,Garage,One Space,Valet

Appliances: Dryer,Dishwasher,Electric Range,Disposal,Microwave,Refrigerator,Washer

Association Amenities: Billiard Room,Business Center,Clubhouse,Elevator(s),Fitness Center,Other,Pool,Sauna,Spa/Hot Tub,Storage,Trash

Cooling: Central Air,Electric

Covered Spaces: 1

Furnished: Unfurnished

Garage Y/N: 1

Heating Y/N: 1

View: City,Other

Entry Location: 24

Attached Garage Y/N: 1

Utilities: Cable Available

Interior Features: Breakfast Bar,Closet Cabinetry,Elevator,First Floor Entry,High Ceilings,Living/Dining Room,Main Living Area Entry Level,Upper Level Primary,Vaulted Ceiling(s),Loft

Pool Features: Association,Heated

Security Features: Door Man,Secured Garage/Parking,Key Card Entry,Fire Sprinkler System

Architectural Style: High Rise

Construction Materials: Brick,Block

Cooling Y/N: 1

Flooring: Parquet,Tile

Garage Spaces: 1

Heating: Central,Electric

Pets Allowed: Conditional,Yes

Entry Level: 24

Patio and Porch Features: Balcony,Open

Stories Total: 47



Rooms & Units Description

Unit Number: 2418

Location Details

County Or Parish: Miami-Dade County

Fees & Taxes

Tax Annual Amount: 6719

Tax Year: 2023

Tax Legal Description: 1060 BRICKELL CONDO UNIT 2418 UNDIV
0.201757440% INT IN COMMON ELEMENTS OFF REC 26157-0942

**Association
Fee Frequency:**
Monthly

Association Fee Includes: Association Management,Amenities,Common
Areas,Hot Water,Insurance,Legal/Accounting,Maintenance
Grounds,Maintenance Structure,Parking,Pool(s),Recreation Facilities,Reserve
Fund,Roof,Sewer,Security,Trash,Water

Miscellaneous

Public Survey Township: 1

**Public
Survey
Section:** 38

Syndication Remarks: Brickell Loft is 1,128 sq ft large on the 24th floor with an
open-style bedroom on the 2nd floor with one full bath and a half bath on the 1st
floor.

**Year Built
Details:**
Resale

Virtual Tour URL: <https://www.propertypanorama.com/instaview/mia/A11520008>

Courtesy of

Office Name: The World Realty, Inc

