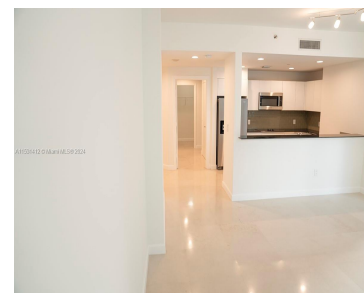
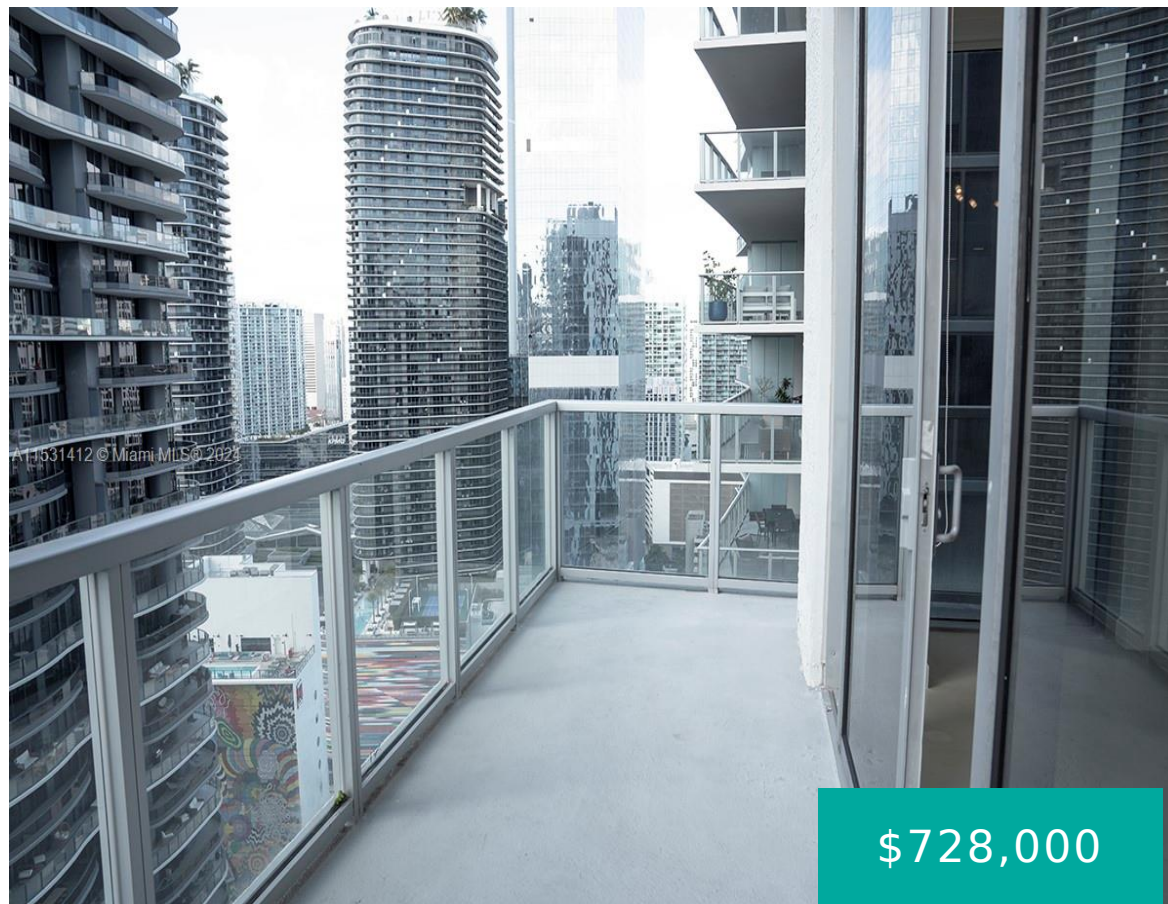


1050 BRICKELL AVE 3320 MIAMI FL 33131

<https://www.cays.com>



GREAT OPPORTUNITY Amazing 2Bed/2.5Bath unit in the heart of Brickell. New vanities and toilet seat mirrors and accessories in bathrooms, renovated cabinet kitchen. Brand New microwave, refrigerator, and blinds. New ceiling recessed lights. Recent duct cleaning for the AC. Fresh paint in the apartment and new painting floor balcony. Great city views open balcony. Covered [...]

- 2 beds
- 3 baths
- Condominium
- Residential
- Active
- 1288 sq ft

Basics

Bathrooms Half: 1

Lot Size Units: Square Feet

Type: Condominium

Bedrooms: 2 beds

Area: 1288 sq ft

Bathrooms Full: 2

Category: Residential

Status: Active

Bathrooms: 3 baths

Year built: 2008



Property details

Total Building Area: 1288

Subdivision Name: 1060 BRICKELL CONDO

Possession: Closing & Funding

Direction Faces: West

Parcel Number: 01-41-38-134-5510

Property Features

Exterior Features: Balcony,Patio

Window Features: Blinds,Impact Glass

Security Features: Security System,Closed Circuit Camera(s),Door Man,Fire Alarm,Secured Garage/Parking,Intercom,Lobby Secured,Other,Fire Sprinkler System,Smoke Detector(s)

Architectural Style: High Rise

Construction Materials: Block

Cooling Y/N: 1

Flooring: Ceramic Tile,Other,Tile

Garage Spaces: 1

Heating: Central

Pets Allowed: Conditional,Yes

Entry Level: 33

Patio and Porch Features: Balcony,Open,Patio

Stories Total: 34

Interior Features: Breakfast Bar,Bedroom on Main Level,Breakfast Area,Dual Sinks,Elevator,Family/Dining Room,Living/Dining Room,Pantry

Parking Features: One Space,Valet

Appliances: Dryer,Dishwasher,Electric Range,Microwave,Self Cleaning Oven,Trash Compactor

Association Amenities: Billiard Room

Cooling: Central Air

Covered Spaces: 1

Furnished: Unfurnished

Garage Y/N: 1

Heating Y/N: 1

View: City,Other

Entry Location: 33

Property Attached Y/N: 1

Utilities: Cable Available

Rooms & Units Description

Unit Number: 3320



Location Details

County Or Parish: Miami-Dade County

Directions: Take the exit toward Downtown onto I-95 S. Take left exit 2C toward Downtown/Miami Ave/US-1 N/Biscayne Blvd. Turn right onto SE 2nd Ave (US-1 S). Turn right onto SE 10th St. Turn left onto Brickell Plz.

Elementary School: Southside

Middle/Junior School: Shenandoah

High School: Washington; Brooker T

Fees & Taxes

Tax Annual Amount: 8635

Tax Year: 2023

Tax Legal Description: 1060 BRICKELL CONDO UNIT 3320 UNDIV 0.201757440% INT IN COMMON ELEMENTS OFF REC 26157-0942

Association Fee: 1588

Association Fee Frequency: Monthly

Association Fee Includes: Pest Control, Trash, Water

Miscellaneous

Public Survey Township: 1

Public Survey Section: 38

Syndication Remarks: RENOVATED CORNER Amazing 2Bed/2.5Bath unit in the heart of Brickell. Building has 2 entrances. Covered and assigned parking space. Vacant and easy to show

Year Built Details: Resale

Virtual Tour URL: <https://www.propertypanorama.com/instaview/mia/A11531412>

Courtesy of

Office Name: Avanti Way Realty LLC

