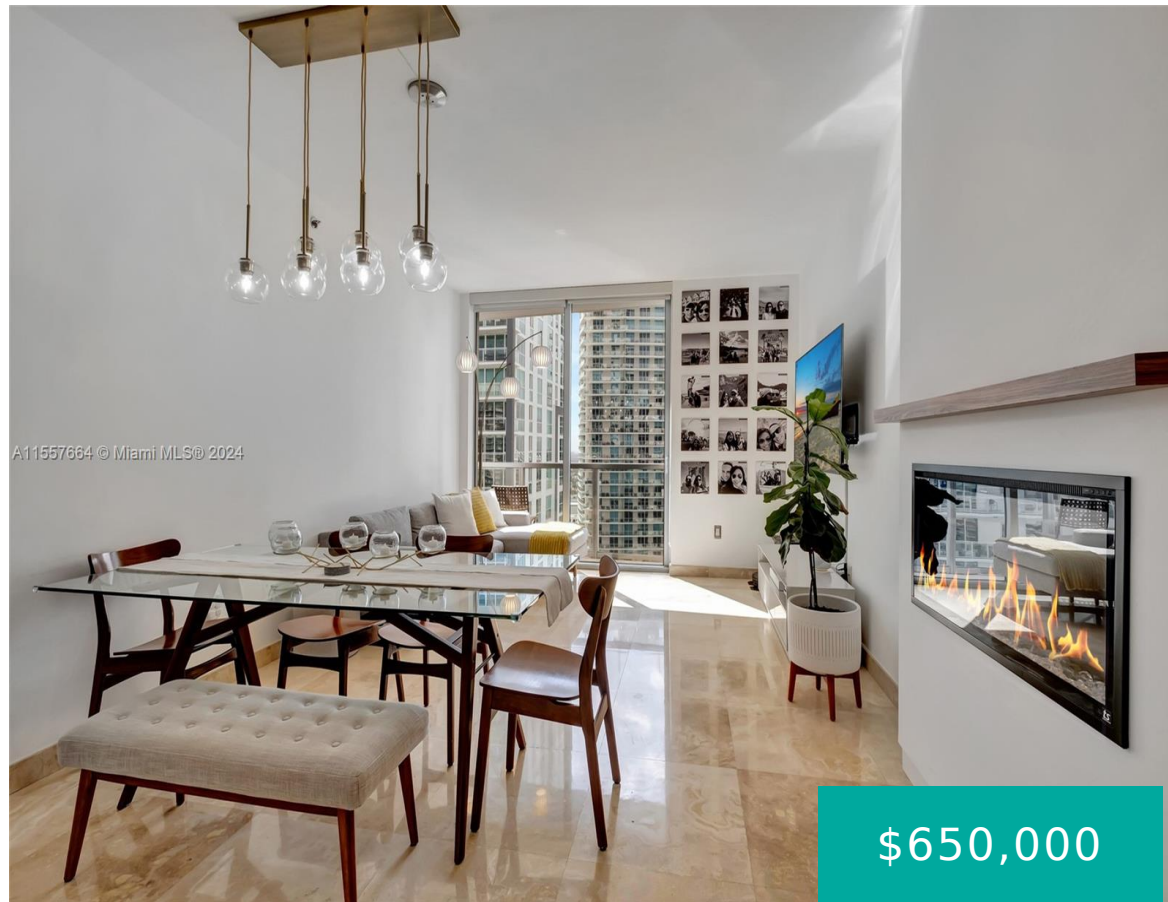


1060 BRICKELL AVE 3011 MIAMI FL 33131

<https://www.cays.com>



Luxurious Condo Living! Welcome to the epitome of urban elegance. Nestled in the heart of Miami's vibrant Brickell neighborhood, this exquisite condo offers a luxurious lifestyle surrounded by world-class amenities and stunning city views. Experience the convenience of living in the heart of Brickell, with easy access to fine dining, shopping, entertainment, and cultural attractions. [...]

- 2 beds
- 2 baths
- Condominium
- Residential
- Active
- 1088 sq ft

Basics

Bathrooms Full: 2

Category: Residential

Status: Active

Bathrooms: 2 baths

Year built: 2008

Lot Size Units: Square Feet

Type: Condominium

Bedrooms: 2 beds

Area: 1088 sq ft



Property details

Total Building Area: 1088

Parcel Number: 01-41-38-134-2090

Subdivision Name: 1060 BRICKELL CONDO

Possession: Close Of Escrow

Property Features

Exterior Features: Balcony

Laundry Features: Common Area

Parking Features: Assigned,One Space,Valet

Appliances: Dryer,Dishwasher,Electric Range,Disposal,Ice Maker,Microwave,Refrigerator,Washer

Association Amenities: Billiard Room,Bike Storage,Business Center,Cabana,Laundry,Pool,Spa/Hot Tub,Trash,Elevator(s)

Cooling: Central Air

Covered Spaces: 1

Flooring: Marble,Wood

Garage Y/N: 1

Heating Y/N: 1

View: Bay,City,Other

Entry Level: 30

Patio and Porch Features: Balcony,Open

Stories Total: 46

Interior Features: Bedroom on Main Level,First Floor Entry,Fireplace,Elevator

Pool Features: Association

Security Features: Door Man,Smoke Detector(s)

Architectural Style: High Rise

Construction Materials: Block

Cooling Y/N: 1

Fireplace Y/N: 1

Garage Spaces: 1

Heating: Central

Pets Allowed: Size Limit,Yes

View Y/N: 1

Entry Location: 30

Property Attached Y/N: 1

Rooms & Units Description

Unit Number: 3011



Location Details

County Or Parish: Miami-Dade County

Middle/Junior School: Shenandoah

Elementary School: Southside

High School: Washington; Brooker T

Fees & Taxes

Tax Annual Amount: 5806

Tax Year: 2023

Tax Legal Description: 1060 BRICKELL
CONDO UNIT 3011 UNDIV 0.181367940%
INT IN COMMON ELEMENTS OFF REC
26157-0942

Association Fee: 1428

Association Fee Frequency: Monthly

Association Fee Includes: Amenities, Common
Areas, Cable TV, Maintenance Grounds, Parking, Pest
Control, Recreation Facilities, Sewer, Trash, Water

Miscellaneous

**Public Survey
Section:** 38

Syndication Remarks: Luxurious Condo Experience the convenience of living in the heart of Brickell, with easy access to fine dining, shopping, and entertainment.

Year Built Details:
Condo-Conversion

Virtual Tour URL:
<https://www.propertypanorama.com/instaview/mia/A11557664>

Courtesy of

Office Name: Coldwell Banker Realty

