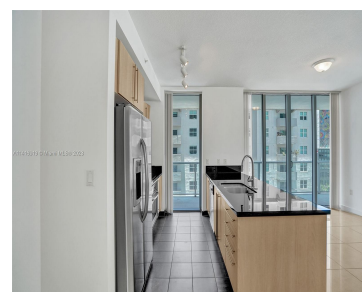
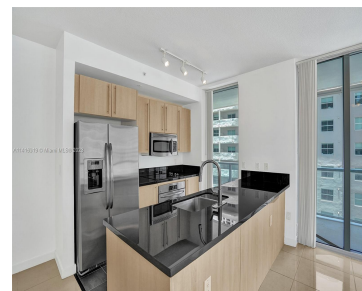
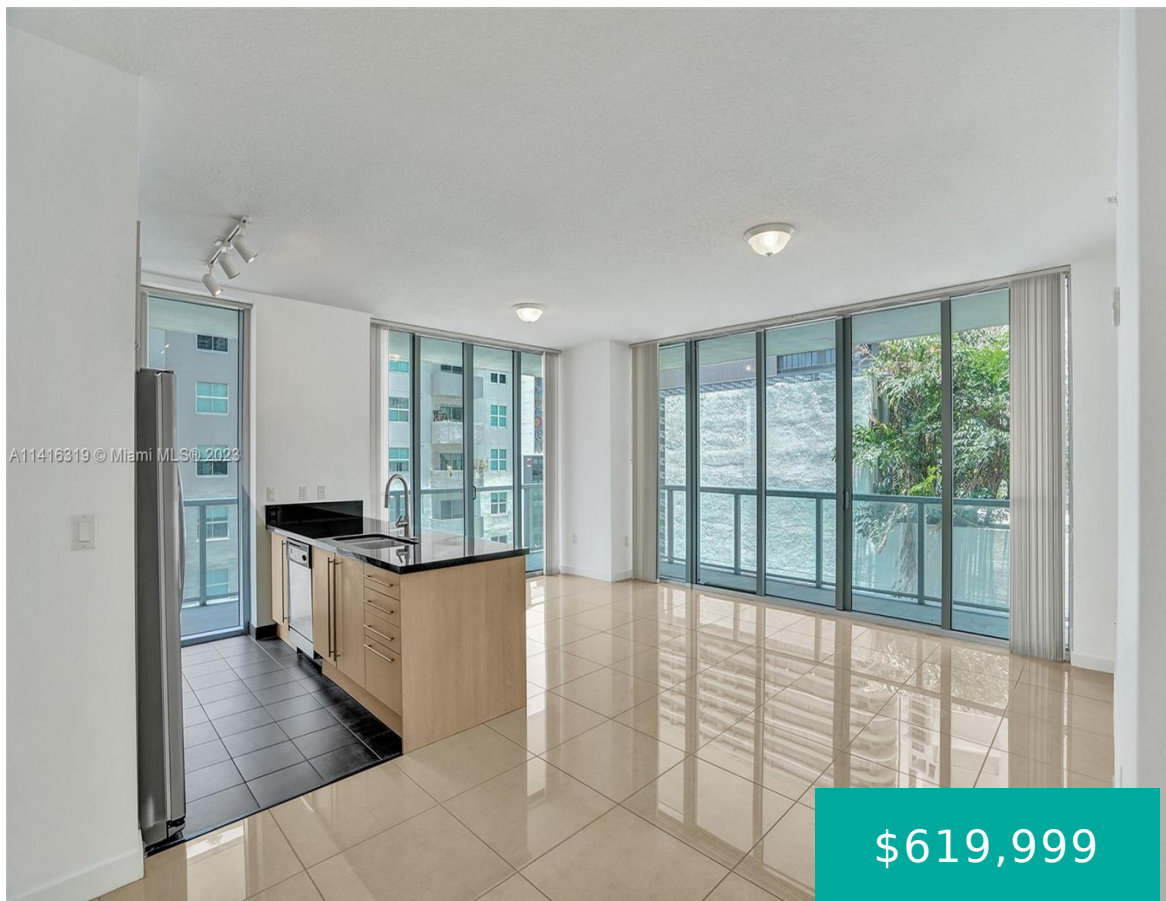


1111 SW 1ST AVE 1220-N MIAMI FL 33130

<https://www.cays.com>



Location! Location! Location! This 2 bdrm 2 bath corner unit is located at Axis on Brickell North Tower. It is conveniently located in the Heart of Mary Brickell Village and the Financial District. The Metro Mover & Metrorail are just a few minutes walk away from this AMAZING location! This beautiful condo has been freshly [...]

- 2 beds
- 2 baths
- Condominium
- Residential
- Active
- 1104 sq ft

Basics

Bathrooms Full: 2

Category: Residential

Status: Active

Bathrooms: 2 baths

Year built: 2008

Lot Size Units: Square Feet

Type: Condominium

Bedrooms: 2 beds

Area: 1104 sq ft



Property details

Builder Model: Unit D

Total Building Area: 1104

Direction Faces: Northeast

Subdivision Name: THE AXIS ON BRICKELL II C

Parcel Number: 01-41-38-139-1870 **Possession:** Closing & Funding

Property Features

Exterior Features: Balcony

Interior Features: Living/Dining Room,Other,Split Bedrooms,Separate Shower,Walk-In Closet(s)

Window Features: Blinds

Pool Features: Association

Parking Features:

Assigned,Attached,Covered,Garage,One Space

Security Features: Door

Man,Secured Garage/Parking,Lobby Secured

Appliances: Dishwasher,Electric Range,Disposal,Ice Maker,Microwave,Refrigerator,Washer

Architectural Style: High Rise

Association Amenities: Billiard Room,Business Center,Clubhouse,Fitness Center,Barbecue,Picnic Area,Playground,Pool,Elevator(s)

Construction Materials: Block

Cooling: Central Air

Cooling Y/N: 1

Covered Spaces: 1

Flooring: Tile

Furnished: Unfurnished

Garage Spaces: 1

Garage Y/N: 1

Heating: Central

Heating Y/N: 1

Pets Allowed: Size Limit,Yes

View: Other

Entry Level: 12

Entry Location: 12

Patio and Porch Features: Balcony,Open

Property Attached Y/N: 1

Attached Garage Y/N: 1

Stories: 1

Stories Total: 40

Utilities: Cable Available

Rooms & Units Description



Unit Number: 1220-N

Number of Units in the Community: 728

Location Details

County Or Parish: Miami-Dade County

Directions: Property is located on the corner of SW 1st Ave and SW 11th St, both SW 1st Ave and SW 11th St are one way streets. The main entrance is on SW 11th Street. There is paid valet or you can park at a meter.

Elementary School: Riverside

Middle/Junior School: de Diego; Jose

High School: Washington; Brooker T

Fees & Taxes

Tax Annual Amount: 4768 **Tax Year:** 2022

Tax Legal Description: THE AXIS ON BRICKELL II CONDO UNIT 1220-N UNDIV 0.3082% INT IN COMMON ELEMENTS OFF REC 26381-3943

Association Fee: 1080

Association Fee Frequency: Monthly

Association Fee Includes: Association Management,Amenities,Hot Water,Maintenance Structure,Parking,Pool(s),Sewer,Security,Trash,Water

Miscellaneous

Public Survey Township: 1

Public Survey Section: 38

Syndication Remarks: 2 bdrm/2 bath corner unit at Axis on Brickell, PRIME location, ceramic tile throughout, split bedroom plan, floor to ceiling windows, \$645K

Year Built Details: Resale

Virtual Tour URL: <https://tours.swift-pix.com/e/X3pqxYP>



Courtesy of

Office Name: One Sotheby's International Realty

