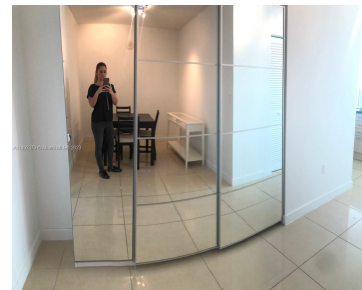
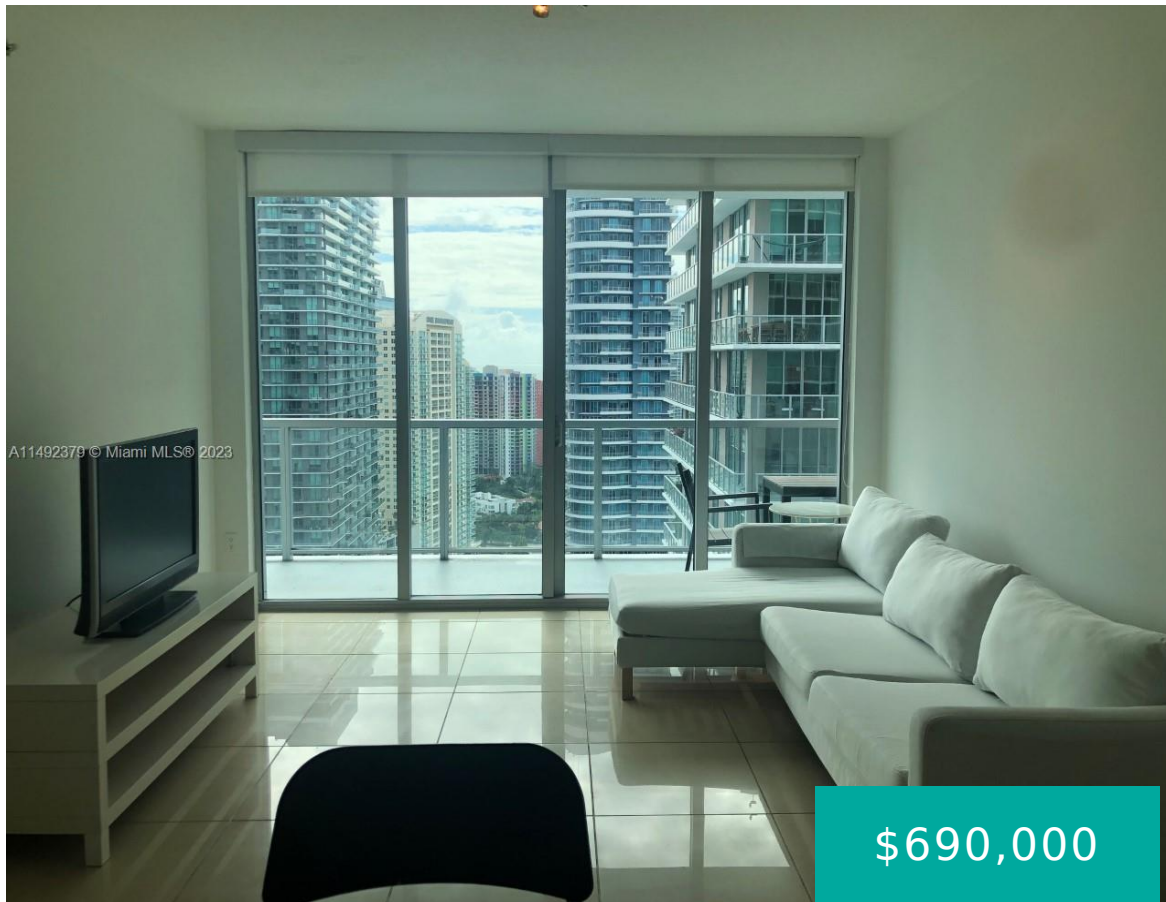


1111 SW 1ST AVE 3617 MIAMI FL 33130

<https://www.cays.com>



Beautiful 2/2 + Den, Fully Furnished, Split Floorplan. Featuring Tile Floors. High floor with Bay and Skyline Views. **2 SINGLE PARKING SPACES Assigned!!!! European cabinetry, Stainless steel appliances, Mosaic kitchen backsplash. Roller solar shades in the living room and blackouts in the bedrooms. Floor to Ceiling Glass Windows with private access to the balcony from [...]

- 2 beds
- 2 baths
- Condominium
- Residential
- Active
- 1106 sq ft

Basics

Bathrooms Full: 2

Category: Residential

Status: Active

Bathrooms: 2 baths

Year built: 2008

Lot Size Units: Square Feet

Type: Condominium

Bedrooms: 2 beds

Area: 1106 sq ft



Property details

Builder Model: C3

Total Building Area: 1106

Disclosures: Owner Is Listing Agent **Subdivision Name:** THE AXIS ON BRICKELL II C

Parcel Number: 01-41-38-139-1200 **Possession:** Closing & Funding

Property Features

Exterior Features: Balcony,Courtyard,Security/High Impact Doors,Porch

Window Features: Impact Glass

Parking Features: Two or More Spaces,Garage Door Opener

Appliances: Dryer,Dishwasher,Electric Range,Disposal,Ice Maker,Microwave,Refrigerator,Washer

Association Amenities: Bike Storage,Business Center,Cabana,Clubhouse,Fitness Center,Barbecue,Picnic Area,Playground,Pool,Spa/Hot Tub,Trash,Elevator(s)

Cooling: Central Air

Covered Spaces: 2

Furnished: Furnished

Garage Y/N: 1

Heating Y/N: 1

View: Bay,City

Entry Level: 36

Patio and Porch Features: Balcony,Open,Wrap Around

Stories Total: 40

Interior Features: First Floor Entry,Other,Separate Shower

Pool Features: Association,Heated

Security Features: Door Man,Fire Alarm,Secured Garage/Parking,Key Card Entry,Security Guard,Smoke Detector(s)

Architectural Style: High Rise

Construction Materials: Block

Cooling Y/N: 1

Flooring: Tile

Garage Spaces: 2

Heating: Central

Pets Allowed: Conditional,Yes

View Y/N: 1

Entry Location: 36

Property Attached Y/N: 1

Rooms & Units Description

Unit Number: 3617

Number of Units in the Community: 718



Location Details

County Or Parish: Miami-Dade County

Fees & Taxes

Tax Annual Amount: 7262

Tax Year: 2022

Tax Legal Description: THE AXIS ON BRICKELL II CONDO UNIT 3617-N UNDIV 0.3087% INT IN COMMON ELEMENTS OFF REC 26381-3943

Association Fee: 1009

Association Fee Frequency: Monthly

Association Fee Includes: Association Management,Amenities,Common Areas,Insurance,Maintenance Grounds,Parking,Pest Control,Pool(s),Recreation Facilities

Miscellaneous

Public Survey Township: 1

Public Survey Section: 38

Syndication Remarks: Beautiful 2/2 + Den, Fully Furnished, Split Floorplan. Featuring Tile Floors. High floor with Bay and Skyline Views. 2 SINGLE PARKING SPACES Assigned!

Year Built Details: Resale

Virtual Tour URL: <https://www.propertypanorama.com/instaview/mia/A11492379>

Courtesy of

Office Name: Axis Premiere Realty

