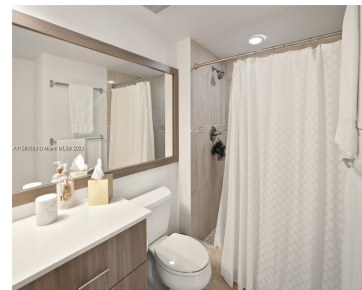


1155 BRICKELL BAY DR 1104 MIAMI FL 33131

<https://www.cays.com>



Embrace city living at its finest in this exceptional waterfront condo, nestled in the heart of Brickell. Meticulously remodeled and impeccably maintained, it offers amazing city and water views. Enjoy resort-style living, amenities include waterfront pool and gym, tennis court and 24-hour concierge, all just moments away from BCC, restaurants, stores and much more! Don't [...]

- 3 beds
- 2 baths
- Condominium
- Residential
- Active
- 1510 sq ft

Basics

Bathrooms Full: 2

Category: Residential

Status: Active

Bathrooms: 2 baths

Year built: 2001

Lot Size Units: Square Feet

Type: Condominium

Bedrooms: 3 beds

Area: 1510 sq ft



Property details

Total Building Area: 1510

Subdivision Name: THE MARK ON BRICKELL COND

Possession: Closing & Funding

Direction Faces: North

Parcel Number: 01-41-38-080-1100

Property Features

Building Features: Exterior Lighting

Interior Features: Bedroom on Main Level,Closet
Cabinetry,First Floor Entry,Living/Dining Room,Pantry,Split
Bedrooms,Walk-In Closet(s)

Window Features: Blinds

Parking Features: One Space

Appliances: Dryer,Dishwasher,Electric Range,Electric Water
Heater,Disposal,Microwave,Refrigerator,Washer

Association Amenities: Business Center,Clubhouse,Fitness
Center,Barbecue,Picnic Area,Pool,Sauna,Spa/Hot Tub,Tennis
Court(s),Trash,Vehicle Wash Area,Elevator(s)

Cooling: Electric

Covered Spaces: 1

Garage Spaces: 1

Heating: Electric

Pets Allowed: Conditional,Yes

View Y/N: 1

Entry Location: 11

Waterfront Y/N: 1

Utilities: Cable Available

Exterior Features: Balcony

Waterfront Features: Bay
Front

Pool Features: Heated

Security Features: Elevator
Secured,Secured
Garage/Parking,Lobby
Secured,Fire Sprinkler
System,Smoke Detector(s)

Architectural Style: High Rise

Construction Materials: Block

Cooling Y/N: 1

Flooring: Other,Tile

Garage Y/N: 1

Heating Y/N: 1

View: Bay,Pool,Tennis Court

Entry Level: 11

Patio and Porch Features:
Balcony,Open

Stories Total: 36



Rooms & Units Description

Unit Number: 1104

Location Details

County Or Parish: Miami-Dade County

Fees & Taxes

Tax Annual Amount: 10445 **Tax Year:** 2023

Tax Legal Description: THE MARK ON BRICKELL
CONDO UNIT 1104 UNDIV
0.36868 INT IN COMMON
ELEMENTS OFF REC
19735-4359 OR
19375-4031 08 2001 1
COC 24155-1996 01 2006

Association Fee: 2329

**Association Fee
Frequency:** Monthly

Association Fee Includes: Association
Management,Amenities,Common Areas,Cable
TV,Insurance,Internet,Legal/Accounting,Maintenance
Grounds,Maintenance Structure,Parking,Pest
Control,Pool(s),Recreation Facilities,Sewer,Security,Trash,Water

Miscellaneous

Public Survey Township: 1

**Public
Survey
Section:** 38

Syndication Remarks: Experience luxury living in this beautifully remodeled 3
bed/2 bath Brickell condo with breathtaking bay views. Modern finishes and
amenities await!

**Year Built
Details:**
Resale

Virtual Tour URL: <https://www.propertypanorama.com/instaview/mia/A11530626>



Courtesy of

Office Name: Fortune Christie's International Real Estate

