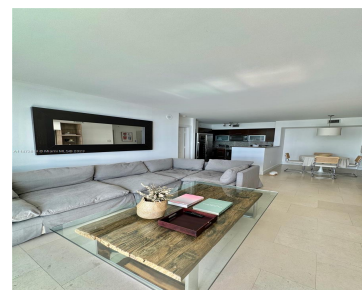


1155 BRICKELL BAY DR 2409 MIAMI FL 33131

<https://www.cays.com>



Experience Luxury Living in the Heart of Brickell! This amazing 2-bed, 2-bath apartment is your gateway to stylish urban living. Fully remodeled kitchen and baths provide modern comfort, while the stunning ocean view adds a touch of tranquility. Plus, enjoy the convenience of having a store right in the building! This chic high-rise lifestyle would [...]

- 2 beds
- 2 baths
- Condominium
- Residential
- Active
- 1140 sq ft

Basics

Bathrooms Full: 2

Category: Residential

Status: Active

Bathrooms: 2 baths

Year built: 2001

Lot Size Units: Square Feet

Type: Condominium

Bedrooms: 2 beds

Area: 1140 sq ft



Property details

Total Building Area: 1140

Subdivision Name: THE MARK ON BRICKELL COND

Parcel Number: 01-41-38-080-2820 **Possession:** Before Closing

Property Features

Exterior Features: Balcony

Interior Features: Bedroom on Main Level,First Floor Entry

Waterfront Features: Bay Front

Pool Features: Association

Parking Features: Two or More Spaces

Security Features: Security System,Closed Circuit Camera(s),Door Man,Elevator Secured,Fire Alarm,Lobby Secured,Phone Entry

Appliances: Dishwasher,Other

Association Amenities: Bike Storage,Business Center,Cabana,Clubhouse,Fitness Center,Other,Pool,Tennis Court(s)

Construction Materials: Block

Cooling: Central Air

Cooling Y/N: 1

Covered Spaces: 2

Fencing: Wall

Flooring: Marble,Other

Garage Spaces: 2

Garage Y/N: 1

Heating: Central

Heating Y/N: 1

Pets Allowed: No Pet Restrictions,Yes

View: Bay

View Y/N: 1

Entry Level: 24

Entry Location: 24

Patio and Porch Features: Balcony,Open

Waterfront Y/N: 1

Stories Total: 40

Rooms & Units Description

Unit Number: 2409

Location Details



County Or Parish: Miami-Dade County

Fees & Taxes

Tax Annual Amount: 8233

Tax Year: 2022

Tax Legal Description: THE MARK ON BRICKELL CONDO UNIT
2409 UNDIV 0.27761 INT IN COMMON ELEMENTS OFF REC
19735-4359 OR 19976-1650 09 2001 1 COC 23838-4393 10 2005

Association Fee: 845

Association Fee Frequency: Monthly

Association Fee Includes:
Amenities

Miscellaneous

Public Survey Township: 1

**Public Survey
Section:** 38

Syndication Remarks: Water view

**Year Built
Details:** Resale

Virtual Tour URL:

<https://www.propertypanorama.com/instaview/mia/A11472814>

Courtesy of

Office Name: Abemar Beltran P.A.

