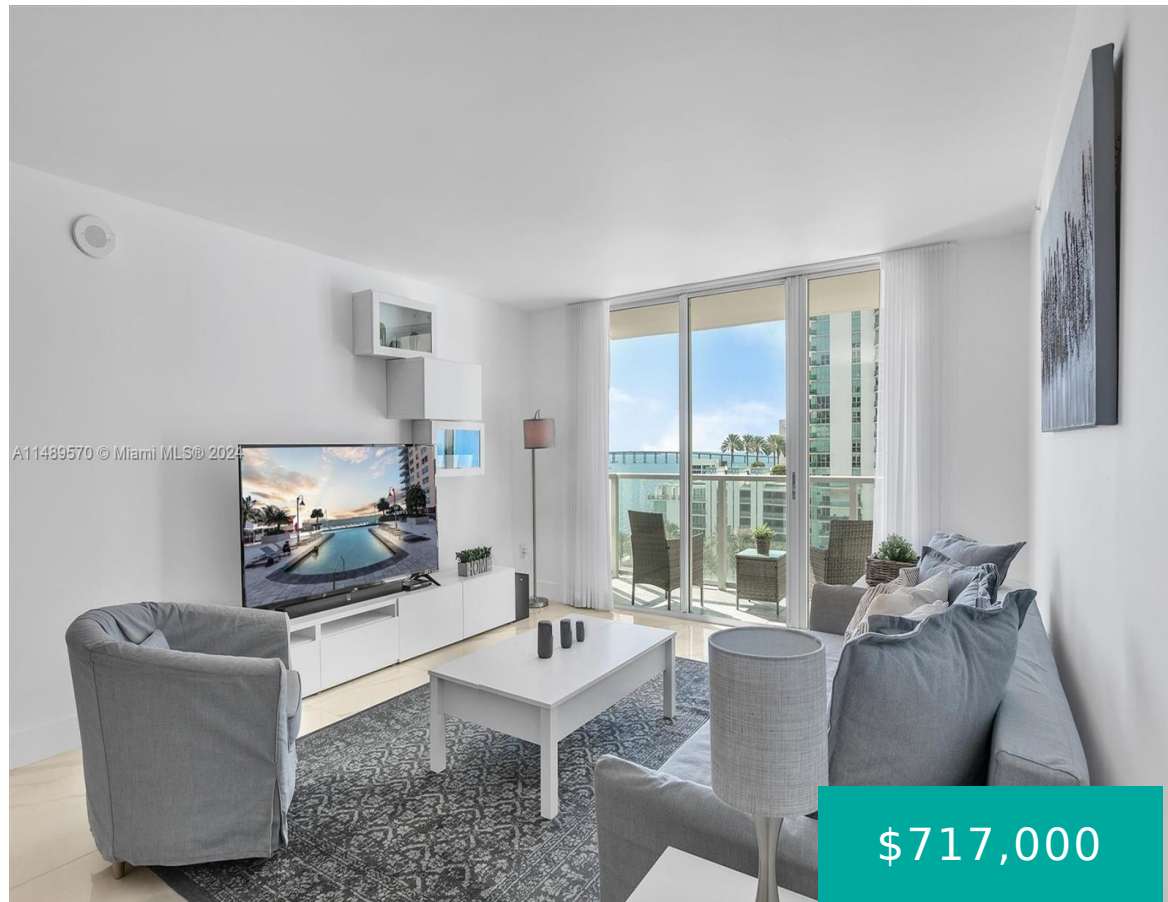


1155 BRICKELL BAY DR 903 MIAMI FL 33131

<https://www.cays.com>



Just Reduced, beautiful 2 Bedrooms 2 Bathrooms ocean view apartment in the heart of Brickell. Completely renovated, new floors throughout, new remodeled bathrooms, all appliances replaced in 2021, new water heater, unit is in very good condition and is offered furnished. 2 parking spaces, building amenities features tennis court, fitness center, sauna, large ocean view [...]

- 2 beds
- 2 baths
- Condominium
- Residential
- Active
- 1140 sq ft

Basics

Bathrooms Full: 2

Category: Residential

Status: Active

Bathrooms: 2 baths

Year built: 2001

Lot Size Units: Square Feet

Type: Condominium

Bedrooms: 2 beds

Area: 1140 sq ft



Property details

Direction Faces: East

Subdivision Name: THE MARK ON BRICKELL COND

Parcel Number: 01-41-38-080-0780 **Possession:** Close Of Escrow,Subject To Tenant Rights

Property Features

Exterior Features: Balcony,Barbecue,Deck,Tennis Court(s)

Waterfront Features: Bay Front,Ocean Front

Parking Features: Assigned,Attached,Garage,Valet

Appliances: Dryer,Dishwasher,Electric Range,Electric Water Heater,Disposal,Ice Maker,Microwave,Refrigerator,Trash Compactor,Washer

Association Amenities: Cabana,Clubhouse,Fitness Center,Barbecue,Picnic Area,Pool,Sauna,Spa/Hot Tub,Tennis Court(s),Elevator(s)

Cooling: Central Air

Covered Spaces: 2

Furnished: Furnished

Garage Y/N: 1

Heating Y/N: 1

View: Bay,Ocean

Entry Level: 9

Patio and Porch Features: Balcony,Deck,Open

Waterfront Y/N: 1

Stories Total: 36

Interior Features: Walk-In Closet(s),Elevator

Pool Features: Association

Security Features: Elevator Secured,Secured Garage/Parking,Key Card Entry,Lobby Secured,Smoke Detector(s)

Architectural Style: High Rise

Construction Materials: Block

Cooling Y/N: 1

Flooring: Tile

Garage Spaces: 2

Heating: Central

Pets Allowed: Conditional,Yes

View Y/N: 1

Entry Location: 9

Property Attached Y/N: 1

Attached Garage Y/N: 1

Utilities: Cable Available

Rooms & Units Description



Unit Number: 903

Location Details

County Or Parish: Miami-Dade County

Fees & Taxes

Tax Annual Amount: 7724

Tax Year: 2023

Tax Legal Description: THE MARK ON BRICKELL CONDO UNIT 903 UNDIV 0.27761 INT IN COMMON ELEMENTS OFF REC 19735-4359 OR 19848-3131 0701 1 COC 23059-1523 01 2005 1

Association Fee: 1535

Association Fee Frequency: Monthly

Association Fee Includes:
Amenities,Cable TV,Internet,Maintenance Structure

Miscellaneous

Public Survey Township: 1

Public Survey Section: 38

Syndication Remarks: 2 Bed 2 Bath ocean view apartment in Brickell, for Showings please use Showing Time Ass. Showings with 48 hours advance notice. Motivated seller.

Year Built Details:
Newly Updated/Renovated

Virtual Tour URL:

<https://www.propertypanorama.com/instaview/mia/A11489570>

Courtesy of

Office Name: Yaffe International Realty

