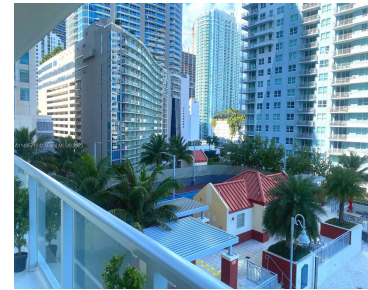
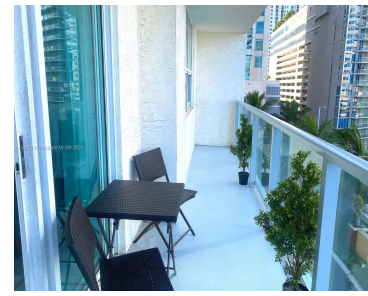


1155 BRICKELL BAY DR 906 MIAMI FL 33131

<https://www.cays.com>



UNBOSTRUCTED WATER VIEW IN BRICKELL AREA! VIEWS OF THE INTRACOASTAL WATERWAY, BISCAYNE BAY/OCEAN! FULLY FURNISHED, STAINLESS STEEL APPLIANCES, GRANITE COUNTERTOPS, FULL SIZED WASHER/DRYER. LAMINATED WOOD FLOOR, LUXURY RESORT-STYLE AMENITIES, PERFECT LOCATION! THE MARK ON BRICKELL HAS BEEN COMPLETELY RENOVATED WITH NEW POOL/JACUZZI, BALCONY RAILINGS, TENNIS, RACKET BALL, FITNESS CENTER, BBQ AREA, CONFERENCE ROOM, ENTERTAINMENT ROOM, [...]

- 1 bed
- 1 bath
- Condominium
- Residential
- Active
- 750 sq ft

Basics



Bathrooms Full: 1
Category: Residential
Status: Active
Bathrooms: 1 bath
Year built: 2001

Lot Size Units: Square Feet
Type: Condominium
Bedrooms: 1 bed
Area: 750 sq ft

Property details

Total Building Area: 750
Subdivision Name: THE MARK ON BRICKELL COND
Possession: Subject To Tenant Rights
Disclosures: Special Assessment
Parcel Number: 01-41-38-080-1710

Property Features

Exterior Features: Balcony
Pool Features: Association
Security Features: Security Guard
Association Amenities: Fitness Center, Pool
Cooling: Central Air
Covered Spaces: 1
Furnished: Furnished
Garage Y/N: 1
Pets Allowed: Conditional, Yes
View Y/N: 1
Entry Location: 9
Property Attached Y/N: 1
Stories Total: 20
Waterfront Features: Ocean Front
Parking Features: Covered, Guest, One Space
Appliances: Dryer, Refrigerator, Washer
Construction Materials: Block
Cooling Y/N: 1
Flooring: Ceramic Tile
Garage Spaces: 1
Heating: None
View: Bay, Ocean
Entry Level: 9
Patio and Porch Features: Balcony, Open
Waterfront Y/N: 1

Rooms & Units Description

Unit Number: 906



Location Details

County Or Parish: Miami-Dade County

Fees & Taxes

Tax Annual Amount: 5766

Tax Year: 2023

Tax Legal Description: THE MARK ON BRICKELL CONDO UNIT
906 UNDIV 0.18361 INT IN COMMON ELEMENTS OFF REC
19735-4359 OR 19818-3531 0701 1 COC 22645-2881 08 2004 1

Association Fee: 1016

Association Fee Frequency: Monthly

Association Fee Includes:
Amenities

Miscellaneous

Public Survey Township: 1

**Public
Survey
Section:** 38

Syndication Remarks: UNBOSTRUCTED WATER VIEW IN BRICKELL AREA! SOLD
TURNKEY, FULLY FURNISHED STAINLESS-STEEL APPLIANCES LAMINATED WOOD
FLOOR, LUXURY RESORT STYLE AMENITIES

**Year Built
Details:**
Resale

Virtual Tour URL: <https://www.propertypanorama.com/instaview/mia/A11485710>

Courtesy of

Office Name: Miami Pro Brokers, LLC

