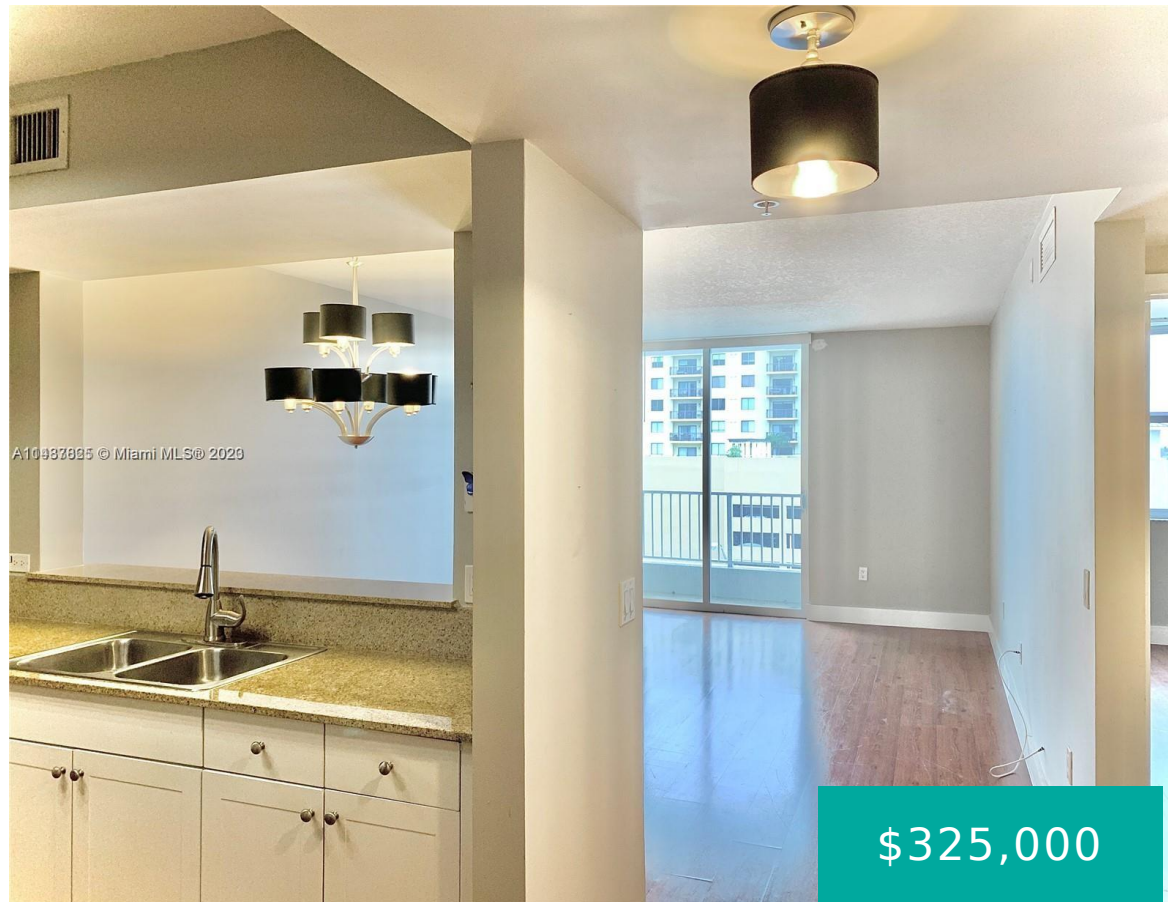


117 42 AV MIAMI FL 33126 117 NW 42 AV 707

<https://www.cays.com>



MEDITERRANEA CONDO UNIT 707 UNDIV 0.4289% IN COMMON ELEMENTS
OFF ***CURRENT MORTGAGE ON PROPERTY FIRST MORTGAGE \$345,000
SECOND MORTGAGE \$35,000*** BEAUTIFUL 1 BEDROOM/1 BATHROOM
CONDO ON THE 7TH FLOOR WITH GREAT CITY VIEWS & LOCATION! CLOSE TO
AIRPORT, MAIN HIGHWAYS, CORAL GABLES, COCONUT GROVE, UM, BEACHES,
MALLS, RESTAURANTS, PUBLIC TRANSPORTATION! VERY WELL DESIGNED
STYLED KITCHEN [...]

- 1 bed
- 1, 1 bath
- Condominium, Residential
- Condominium, Residential
- Active
- 703 sq ft

Basics



Category: Condominium, Residential
Status: Active
Bathrooms: 1, 1 bath
Floors: 1, 16 floor
Year built: 2006
Subdivision Name: MEDITERRANEA CONDO

Type: Condominium, Residential
Bedrooms: 1 bed
Half baths: 0 half baths
Area: 703 sq ft
View: Other
County: Miami-Dade County

Property details

Subdivision Name: MEDITERRANEA CONDO

Parcel Number: 33126

Property Features

Parking Features: Covered,OneSpace

Cooling Y/N: 1

Heating Y/N: 1

View: Other

Stories Total: 16

Cooling: CentralAir,Electric

Heating: Central,Electric

Pets Allowed: No

Stories: 1

Rooms & Units Description

Unit Number: 707

Location Details

County Or Parish: Miami-Dade County **Directions:** ON LEJEUNE RD (42 AVE) BETWEEN FLAGLER ST AND NW 2 ST

Elementary School: Kinlock Park

Middle/Junior School: Kinlock Park

High School: Coral Glades High



Building Details

Architectural Style: HighRise

Levels: One

Construction Materials: Block

Floor covering: Wood

Amenities & Features

Parking Features: Covered,OneSpace

Patio & Porch Features: Balcony,Open

Utilities: CableAvailable

Cooling: CentralAir,Electric

Furnished: Unfurnished

Interior Features:

Elevator,LivingDiningRoom,MainLevelPrimary,Pantry,WalkInClosets

Security Features: ComplexFenced,ElevatorSecured

Association Amenities: Elevators,FitnessCenter,Sauna

Window Features: Blinds,Sliding,ImpactGlass

Exterior Features: Balcony,SecurityHighImpactDoors

Heating: Central,Electric

Appliances:

Dryer,Dishwasher,ElectricRange,ElectricWaterHeater,Refrigerator,Washer

Nearby Schools

Middle Or Junior School: Kinlock Park

High School: Coral Glades High

Elementary School: Kinlock Park

Expenses, Fees & Taxes

Association Fee: \$370

Tax Year: 2022

Tax Annual Amount: \$4,222

Fees & Taxes

Association Fee: 370

Miscellaneous



Association Fee Frequency: Monthly

Listing Terms: Cash,Conventional

List Office Name: One Stop Realty

Direction Faces: Southwest

Miscellaneous

Above Grade **Virtual Tour URL:**

Finished Area: <https://www.propertypanorama.com/instaview/mia/A11487825>
Miami, FL

Courtesy of

Office Name: One Stop Realty

