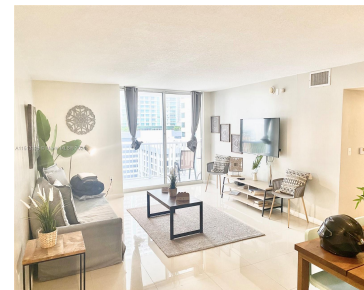


1200 BRICKELL BAY DR 1724 MIAMI FL 33131

<https://www.cays.com>



Beautiful spacious 3 bedroom 2 bathroom condo located in the heart of Brickell area. Walking distance to the shops at Brickell City Center, to the best restaurants and bars in Mary Brickell Village, and more! The condo offers incredible wrap around balcony with partial ocean/water views. The condo's elegant design and open concept living make [...]

- 3 beds
- 2 baths
- Condominium
- Residential
- Active
- 1232 sq ft

Basics

Bathrooms Full: 2

Category: Residential

Status: Active

Bathrooms: 2 baths

Year built: 2004

Lot Size Units: Square Feet

Type: Condominium

Bedrooms: 3 beds

Area: 1232 sq ft



Property details

Total Building Area: 1232

Subdivision Name: THE CLUB AT BRICKELL BAY

Parcel Number: 01-41-39-086-6170 **Possession:** Other

Property Features

Building Features: Exterior Lighting

Interior Features: Bedroom on Main Level,First Floor Entry,Garden Tub/Roman Tub,Main Living Area Entry Level,Split Bedrooms,Walk-In Closet(s)

Pool Features: Association

Security Features: Door Man,Security Guard

Association Amenities: Clubhouse,Fitness Center,Pool,Trash,Elevator(s)

Cooling: Central Air

Covered Spaces: 1

Garage Spaces: 1

Heating: Central

Pets Allowed: Conditional,Yes

View Y/N: 1

Entry Location: 17

Property Attached Y/N: 1

Stories Total: 43

Exterior Features: Balcony

Laundry Features: Washer Hookup,Dryer Hookup

Parking Features: Assigned,Attached,Garage

Appliances: Dishwasher,Electric Range,Microwave,Refrigerator

Construction Materials: Block

Cooling Y/N: 1

Flooring: Tile

Garage Y/N: 1

Heating Y/N: 1

View: Bay,Other

Entry Level: 17

Patio and Porch Features: Balcony,Open

Attached Garage Y/N: 1

Rooms & Units Description

Unit Number: 1724



Location Details

County Or Parish: Miami-Dade County

Fees & Taxes

Tax Annual Amount: 8065 **Tax Year:** 2022

Tax Legal Description:
THE CLUB AT BRICKELL BAY
PLAZA CONDO UNIT 1724
UNDIV 0.21790% INT IN
COMMON ELEMENTS OFF
REC 22843-0725 COC
25289-4683 01 2007 6

Association Fee: 900

**Association Fee
Frequency:** Monthly

Association Fee Includes: Amenities,Common Areas,Cable
TV,Maintenance Grounds,Maintenance
Structure,Parking,Pool(s),Sewer,Security,Trash,Water

Miscellaneous

Public Survey Township: 1

**Public
Survey
Section:** 39

Syndication Remarks: Beautiful apartment in the heart of Brickell.

**Year Built
Details:**
Resale

Virtual Tour URL:

<https://www.propertypanorama.com/instaview/mia/A11513325>

Courtesy of

Office Name: EXP Realty, LLC

