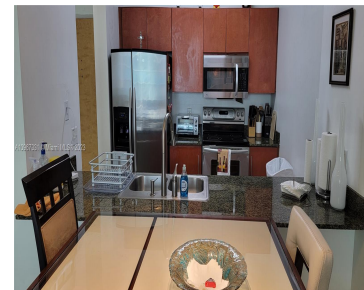
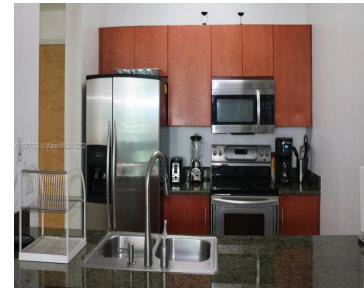
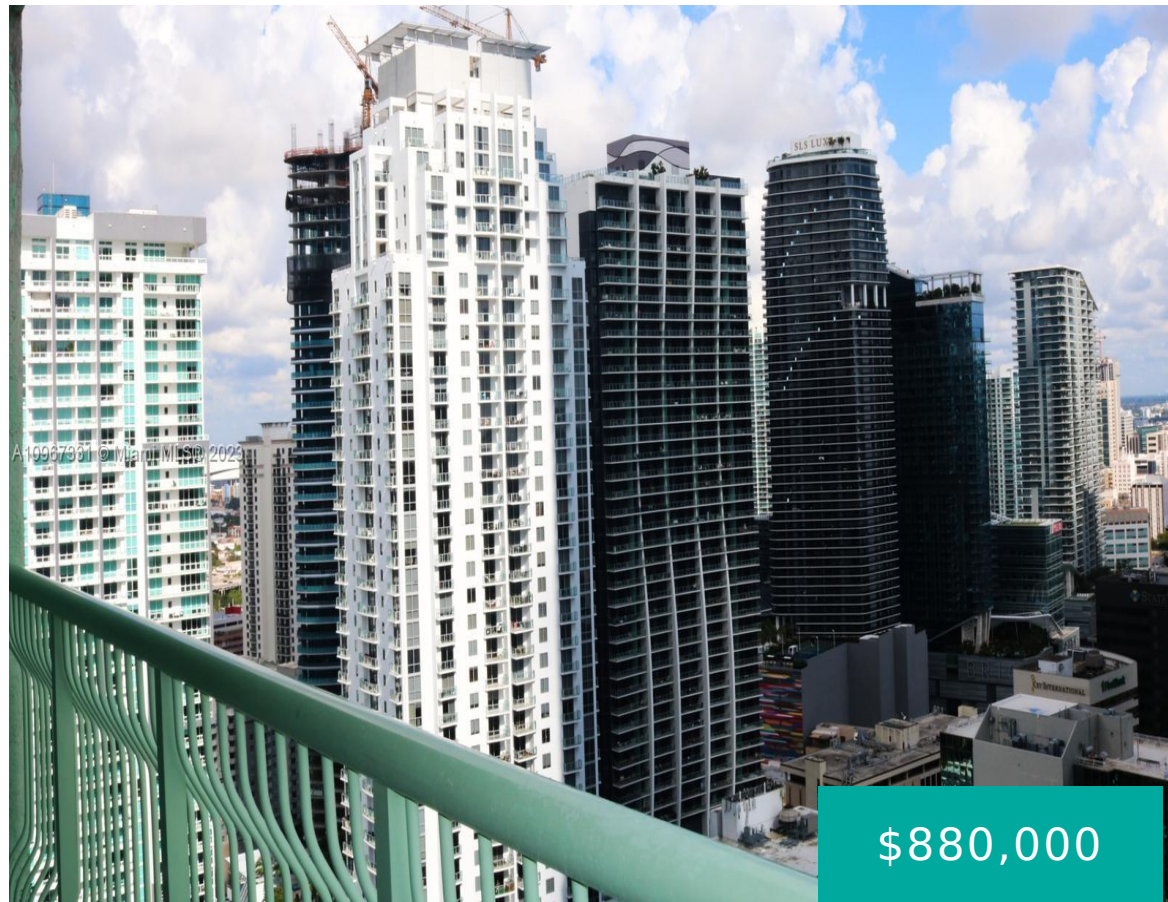


1200 BRICKELL BAY DR PH4214 MIAMI FL 33131

<https://www.cays.com>



\$880,000

Amazing PH 3 bedroom apartment on the 42th Floor, Breathtaking city and partial water views from this 3/2 spacious condo, Porcelain through the whole apartment and on the balcony too, huge master bedroom has ample walking closet space. Unit features washer and dryer and fully equipped kitchen. The apartment has two large balconies almost 400 [...]

- 3 beds
- 2 baths
- Condominium
- Residential
- Active
- 1245 sq ft

Basics

Bathrooms Full: 2

Category: Residential

Status: Active

Bathrooms: 2 baths

Year built: 2005

Lot Size Units: Square Feet

Type: Condominium

Bedrooms: 3 beds

Area: 1245 sq ft



Property details

Total Building Area: 1245

Direction Faces: North

Disclosures: Owner Is Listing Agent

Subdivision Name: THE CLUB AT BRICKELL BAY

Parcel Number: 01-41-39-086-3550

Possession: Closing & Funding

Property Features

Exterior Features: Balcony

Interior Features: Bedroom on Main Level,First Floor Entry,Handicap Access,Split Bedrooms,Walk-In Closet(s),Elevator

Laundry Features: Common Area

Waterfront Features: Bay Front

Pool Features: Association

Parking Features: Assigned,Attached,Garage,One Space,Valet

Security Features: Fire Sprinkler System,Smoke Detector(s)

Appliances: Dryer,Dishwasher,Electric Range,Disposal,Gas Water Heater,Microwave,Refrigerator,Trash Compactor

Architectural Style: High Rise

Association Amenities: Billiard Room,Bike Storage,Business Center,Fitness Center,Laundry,Pool,Trash,Elevator(s)

Construction Materials: Block

Cooling: Central Air,Electric

Cooling Y/N: 1

Covered Spaces: 1

Flooring: Ceramic Tile,Tile

Furnished: Furnished

Garage Spaces: 1

Garage Y/N: 1

Heating: Central,Electric

Heating Y/N: 1

View: Bay,City

View Y/N: 1

Entry Level: 42

Entry Location: 42

Patio and Porch Features: Balcony,Open,Screened

Property Attached Y/N: 1

Waterfront Y/N: 1

Attached Garage Y/N: 1

Stories Total: 43

Utilities: Cable Available

Rooms & Units Description



Unit Number: PH4214

Location Details

County Or Parish: Miami-Dade County

Fees & Taxes

Tax Annual Amount: 6392

Tax Year: 2020

Tax Legal Description: THE CLUB AT BRICKELL BAY PLAZA CONDO UNIT 4214 UNDIV 0.14468% INT IN COMMON ELEMENTS OFF REC 22843-0725 COC 25770-1297 06 2007 1

Association Fee: 888

Association Fee Frequency: Monthly

Association Fee Includes: Association Management,Cable TV,Hot Water,Internet,Maintenance Structure,Parking,Pool(s),Sewer,Security,Water

Miscellaneous

Public Survey Township: 1

Public Survey Section: 39

Syndication Remarks: Amazing PH 3 bedroom apartment on the 42th Floor, Breathtaking city and partial water views from this 3/2 spacious condo.

Year Built Details: Resale

Virtual Tour URL: <https://www.propertypanorama.com/instaview/mia/A10967331>

Courtesy of

Office Name: Brickell Global Consultants Corp

