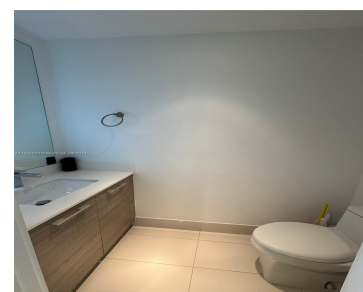
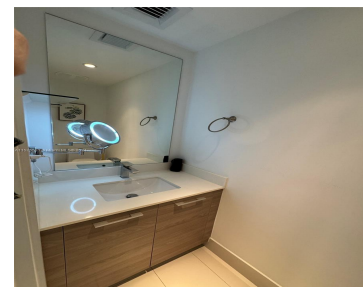
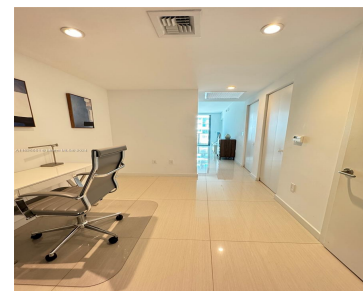
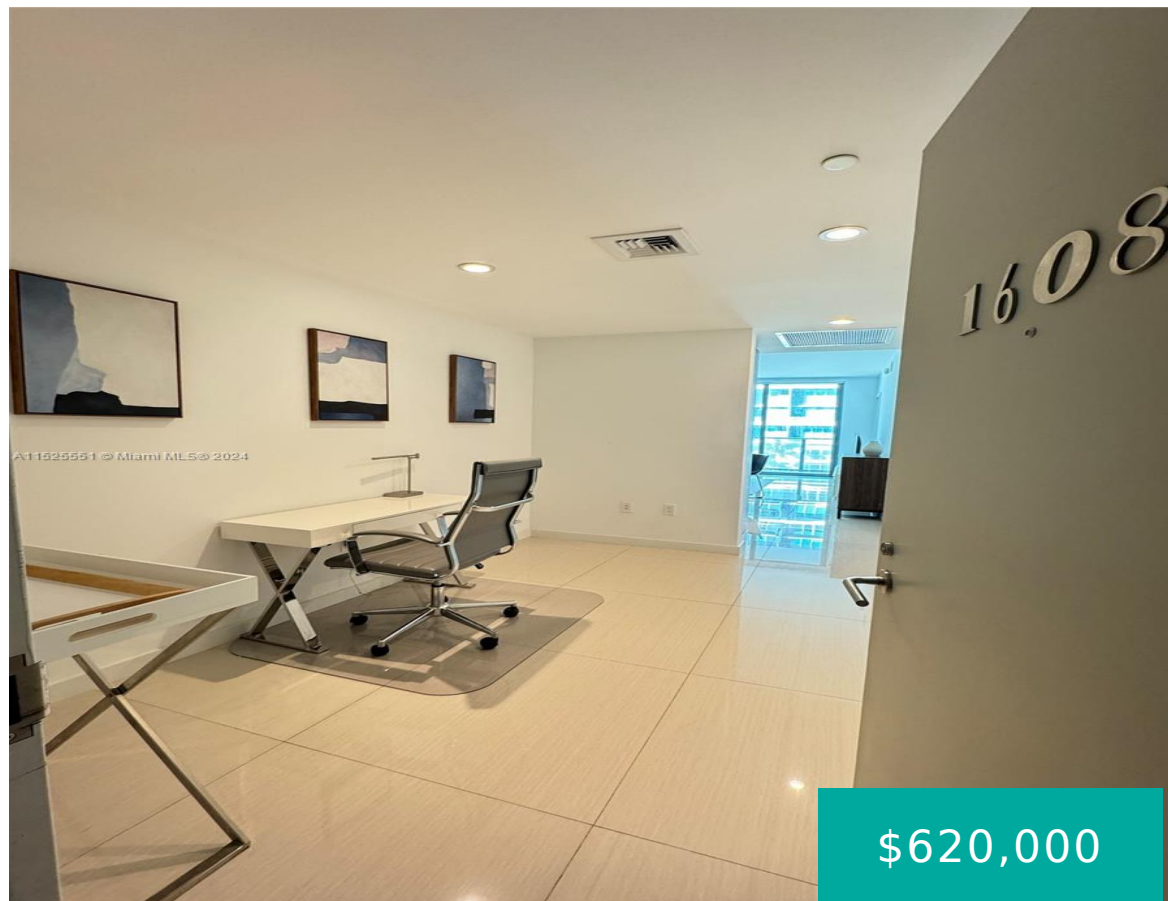


1300 S MIAMI AVE 1608 MIAMI FL 33130

<https://www.cays.com>



Immerse yourself in luxury in this fully furnished one-bedroom + den, 1.5 bathroom residence at SLS Brickell. With 762 sq ft and an extended balcony, relish the Miami skyline. Modern features include porcelain floors, finished closets, and blinds, creating a chic living experience. Enjoy world-class amenities such as a fitness center, sky-roof pool deck, steam [...]

- 1 bed
- 2 baths
- Condominium
- Residential
- Active
- 649 sq ft

Basics

Bathrooms Half: 1

Lot Size Units: Square Feet

Type: Condominium

Bedrooms: 1 bed

Area: 649 sq ft

Bathrooms Full: 1

Category: Residential

Status: Active

Bathrooms: 2 baths

Year built: 2016



Property details

Subdivision Name: 1300 S MIAMI AVENUE CONDO **Parcel Number:** 01-41-39-126-2720

Possession: Closing & Funding,Close Of Escrow

Property Features

Exterior Features: Balcony,Security/High Impact Doors

Laundry Features: Washer Hookup,Dryer Hookup

Parking Features: Covered,One Space

Appliances: Dishwasher,Electric Range,Electric Water Heater,Disposal,Microwave,Refrigerator

Association Amenities:

Cabana,Clubhouse,Elevator(s),Fitness Center,Pool,Sauna,Spa/Hot Tub

Cooling: Central Air,Electric

Covered Spaces: 1

Furnished: Furnished

Garage Y/N: 1

Heating Y/N: 1

View: City,Pool

Entry Location: 16

Property Attached Y/N: 1

Interior Features: Bedroom on Main Level,Elevator,First Floor Entry,Walk-In Closet(s),Bar

Pool Features: Association

Security Features: Door Man,Key Card Entry,Smoke Detector(s)

Architectural Style: High Rise

Construction Materials:

Brick,Block

Cooling Y/N: 1

Flooring: Ceramic Tile

Garage Spaces: 1

Heating: Central,Electric

Pets Allowed: No Pet Restrictions,Yes

Entry Level: 16

Patio and Porch Features: Balcony,Open

Stories Total: 52

Rooms & Units Description

Unit Number: 1608



Location Details

County Or Parish: Miami-Dade County

Fees & Taxes

Tax Annual Amount: 6562

Tax Year: 2023

Tax Legal Description: 1300 S MIAMI AVENUE CONDO
UNIT 1608 UNDIV 0.00141218% INT IN COMMON
ELEMENTS OFF REC 28717-2894

Association Fee: 270

Association Fee Frequency: Monthly

Association Fee Includes:
Amenities,Internet

Miscellaneous

Public Survey Township: 1

**Public Survey
Section:** 39

Syndication Remarks: luxury fully furnished one-bedroom + den, 1.5
bathroom residence at SLS Brickell. With 762 sq ft and an extended balcony,
relish the Miami skyline.

**Year Built
Details:** New
Construction

Virtual Tour URL:

<https://www.propertypanorama.com/instaview/mia/A11525551>

Courtesy of

Office Name: Habitat Realty LLC

