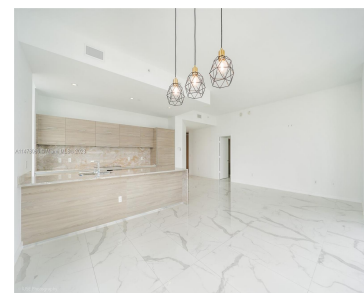
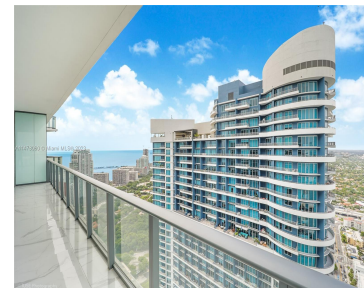
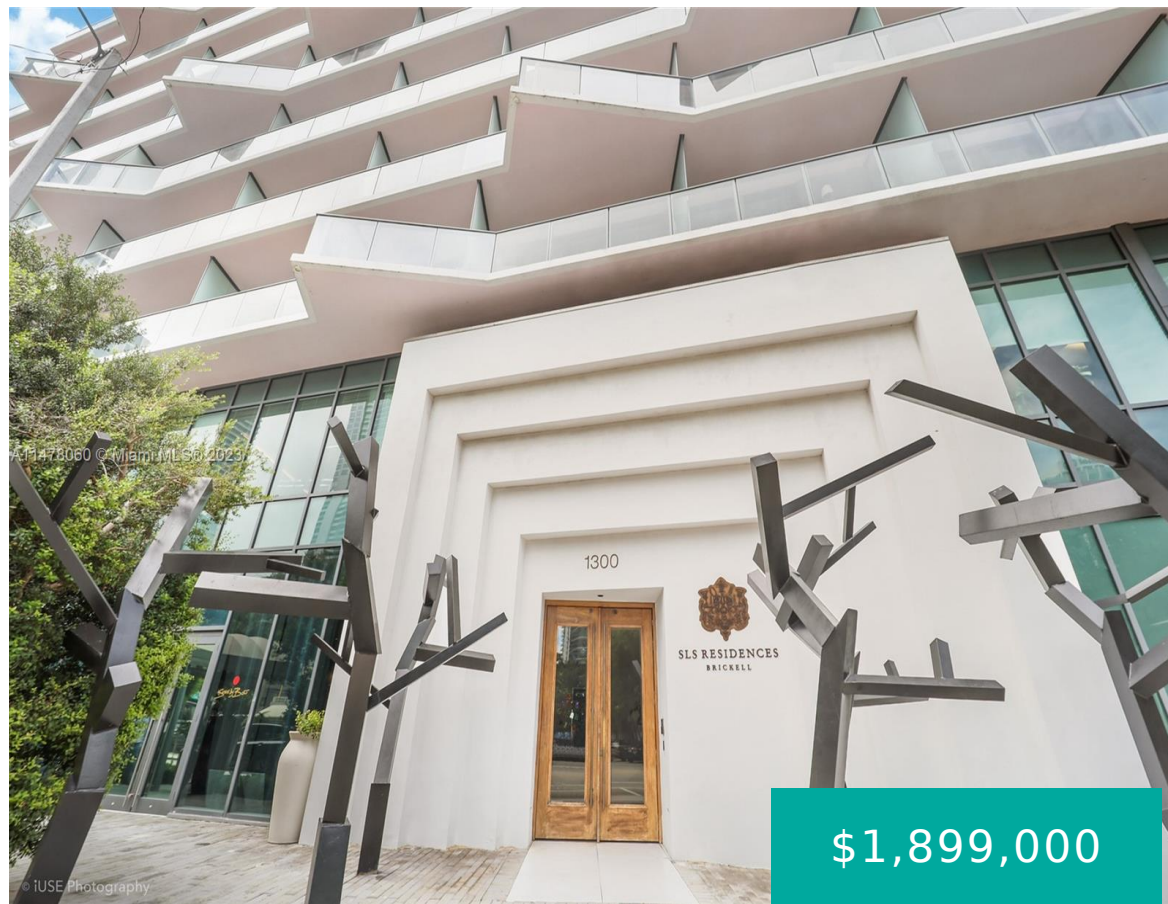


1300 S MIAMI AVE PH5010 MIAMI FL 33130

<https://www.cays.com>



Beautiful Penthouse at the SLS Residences in Brickell on the 50th floor with panoramic breathtaking views. This spectacular Penthouse features high ceilings, 3-bedroom, 2.5- bathroom plus den, open kitchen with marble countertop, top of the line appliances, floors all throughout, wraparound balcony and 2 parking spaces. Amazing resort-style amenities shared with SLS Hotels including a [...]

- 3 beds
- 3 baths
- Condominium
- Residential
- Active
- 1711 sq ft

Basics

Bathrooms Half: 1

Lot Size Units: Square Feet

Type: Condominium

Bedrooms: 3 beds

Area: 1711 sq ft

Bathrooms Full: 2

Category: Residential

Status: Active

Bathrooms: 3 baths

Year built: 2016



Property details

Total Building Area: 1711

Subdivision Name: 1300 S MIAMI AVENUE CONDO

Parcel Number: 01-41-39-126-4440 **Possession:** Other

Property Features

Exterior Features: Security/High Impact Doors

Window Features: Impact Glass

Parking Features:

Assigned,Attached,Covered,Underground,Garage,Two or More Spaces,Valet

Appliances: Built-In Oven,Dryer,Dishwasher,Electric Range,Disposal,Ice Maker,Microwave,Refrigerator,Washer

Association Amenities: Elevator(s),Fitness Center,Pool,Sauna,Spa/Hot Tub

Cooling: Central Air

Covered Spaces: 2

Furnished: Unfurnished

Garage Y/N: 1

Heating Y/N: 1

View: City,Water

Entry Level: 50

Property Attached Y/N: 1

Stories Total: 54

Interior Features: Bedroom on Main Level,First Floor Entry,Living/Dining Room,Elevator

Pool Features: Association

Security Features: Elevator Secured,Secured Garage/Parking,Lobby Secured,Smoke Detector(s)

Architectural Style: High Rise

Construction Materials: Block

Cooling Y/N: 1

Flooring: Other

Garage Spaces: 2

Heating: Central

Pets Allowed: Conditional,Yes

View Y/N: 1

Entry Location: 50

Attached Garage Y/N: 1

Utilities: Cable Available

Rooms & Units Description

Unit Number: PH5010



Location Details

County Or Parish: Miami-Dade County

Fees & Taxes

Tax Annual Amount: 22025

Tax Year: 2022

Tax Legal Description: 1300 S MIAMI AVENUE CONDO UNIT PH5010 UNDIV 0.00372302% INT IN COMMON ELEMENTS OFF REC 28717-2894

Association Fee: 1700

Association Fee Frequency: Monthly

Association Fee Includes:
Amenities

Miscellaneous

Public Survey Township: 1

Public Survey Section: 39

Syndication Remarks: .

Year Built Details: Resale

Virtual Tour URL:

<https://www.propertypanorama.com/instaview/mia/A11478060>

Courtesy of

Office Name: Fortune Christie's International Real Estate

