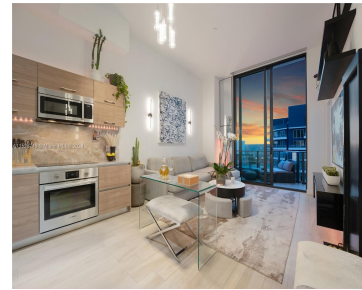
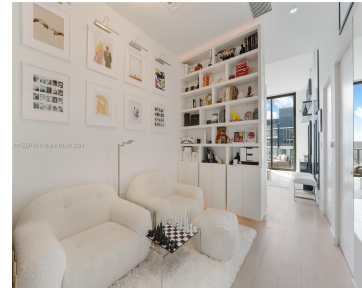
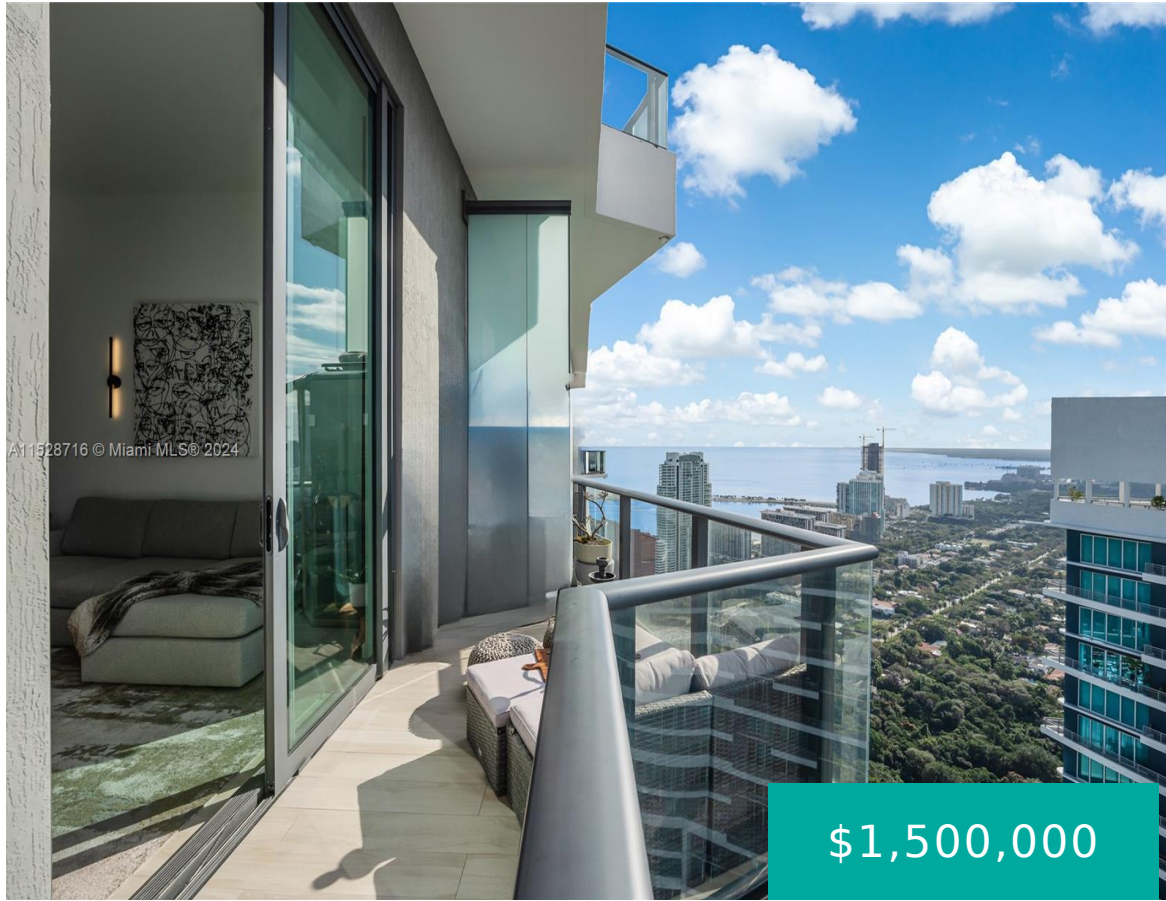


1300 S MIAMI AVE UPH5 MIAMI FL 33130

<https://www.cays.com>



Welcome to a one-of-a-kind access to Upper Penthouse level. An unparalleled living experience. Perched atop the cityscape, this exquisite one-bed penthouse offers a masterful blend of chic sophistication. Step outside onto your private terrace and be prepared to be mesmerized by the 180-degree vibrant colors of sunrise to the enchanting city lights at night. This [...]

- 1 bed
- 2 baths
- Condominium
- Residential
- Active
- 682 sq ft

Basics

Bathrooms Half: 1

Lot Size Units: Square Feet

Type: Condominium

Bedrooms: 1 bed

Area: 682 sq ft

Bathrooms Full: 1

Category: Residential

Status: Active

Bathrooms: 2 baths

Year built: 2016



Property details

Builder Model: PH

Total Building Area: 682

Direction Faces: West

Subdivision Name: 1300 S MIAMI AVENUE CONDO

Parcel Number: 01-41-39-126-4510 **Possession:** Closing & Funding

Property Features

Exterior Features:

Balcony, Security/High Impact Doors

Interior Features: Bedroom on Main Level, Closet Cabinetry, First Floor Entry, High Ceilings, Living/Dining Room, Main Living Area Entry Level, Elevator, Bar

Waterfront Features: Other

Window Features: Blinds, Impact Glass

Pool Features: Association

Parking Features: Assigned, Detached, Garage, Two or More Spaces, Valet

Security Features: Door Man, Elevator Secured, Secured Garage/Parking, Fire Sprinkler System

Appliances: Built-In Oven, Dryer, Dishwasher, Electric Range, Electric Water Heater, Disposal, Microwave, Refrigerator, Self Cleaning Oven, Water Purifier, Washer

Architectural Style: High Rise, Penthouse

Association Amenities: Business Center, Cabana, Clubhouse, Fitness Center, Hobby Room, Library, Barbecue, Picnic Area, Pool, Sauna, Elevator(s)

Construction Materials: Block

Cooling: Central Air, Electric

Cooling Y/N: 1

Covered Spaces: 2

Flooring: Tile

Furnished: Negotiable

Garage Spaces: 2

Garage Y/N: 1

Heating: Central, Electric

Heating Y/N: 1

Pets Allowed: Conditional, Yes

View: Bay, City, Ocean

View Y/N: 1

Entry Level: 53

Entry Location: 53

Patio and Porch Features: Balcony, Open

Stories Total: 53

Utilities: Cable Available

Rooms & Units Description

Unit Number: UPH5

Number of Units in the Community: 560



Location Details

County Or Parish: Miami-Dade County

Middle/Junior School: Shenandoah

Elementary School: Southside

High School: Washington; Brooker T

Fees & Taxes

Tax Annual Amount: 9435

Tax Legal Description: 1300 S MIAMI AVENUE CONDO UNIT UPH5 UNDIV
0.00148399% INT IN COMMON ELEMENTS OFF REC 28717-2894

Tax Year: 2023

**Association Fee
Frequency:**
Monthly

Association Fee Includes: Association Management,Common
Areas,Cable TV,Hot Water,Insurance,Maintenance Grounds,Maintenance
Structure,Parking,Recreation Facilities,Roof,Security

Miscellaneous

Public Survey Township: 1

**Public Survey
Section:** 39

Syndication Remarks: Upper Penthouse Level, 12 ft Ceilings, Modern-chic
sophistication, Miami skyline views!

**Year Built
Details:** Resale

Virtual Tour URL: <https://vimeo.com/910953109?share=copy>

Courtesy of

Office Name: One Sotheby's International Realty

