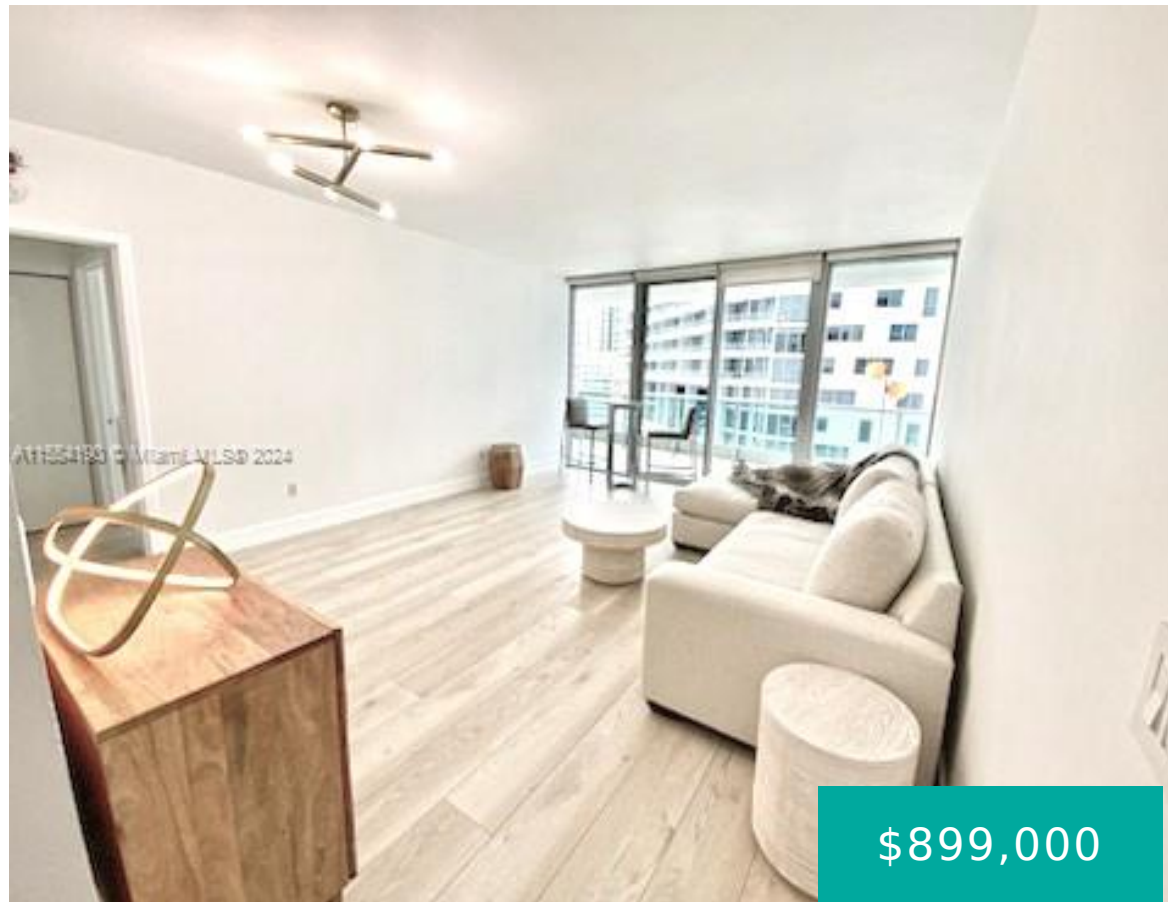


1331 BRICKELL BAY DR 1604 MIAMI FL 33131

<https://www.cays.com>



\$899,000



Brickell's best waterfront building! Enjoy urban upscale, 5-star living from this oversized unit, with a large balcony. Upgraded kitchen and bathrooms, Miele and Subzero appliances, large whirlpool hot-tub, Amenities include a bayfront infinity-edge pool and jacuzzi, gym and spa, complimentary valet, 48th floor Club Room, racquetball court, bicycle storage room, 24-hour concierge and security, kids [...]

- 1 bed
- 1 bath
- Condominium
- Residential
- Active
- 895 sq ft

Basics

Bathrooms Full: 1

Category: Residential

Status: Active

Bathrooms: 1 bath

Year built: 2004

Lot Size Units: Square Feet

Type: Condominium

Bedrooms: 1 bed

Area: 895 sq ft



Property details

Total Building Area: 895

Direction Faces: Northeast

Subdivision Name: JADE RESIDENCES AT BRICKE

Parcel Number: 01-41-39-082-1390

Possession: Closing & Funding,Close Of Escrow

Property Features

Exterior Features: Balcony

Interior Features: Built-in Features,Bedroom on Main Level,Breakfast Area,Dual Sinks,Entrance Foyer,First Floor Entry,Garden Tub/Roman Tub,Jetted Tub,Custom Mirrors,Walk-In Closet(s)

Waterfront Features: Bay Front

Window Features: Blinds,Impact Glass

Pool Features: Association,Heated

Parking Features: Covered,Two or More Spaces

Security Features: Elevator Secured,Secured Garage/Parking,Other,Smoke Detector(s)

Appliances: Built-In Oven,Dryer,Dishwasher,Electric Range,Disposal,Ice Maker,Microwave,Refrigerator,Self Cleaning Oven,Washer

Architectural Style: High Rise

Association Amenities: Bike Storage,Business Center,Cabana,Clubhouse,Fitness Center,Playground,Pool,Sauna,Spa/Hot Tub,Trash,Vehicle Wash Area,Elevator(s)

Construction Materials: Block

Cooling: Central Air,Electric

Cooling Y/N: 1

Covered Spaces: 2

Flooring: Marble,Tile

Garage Spaces: 2

Garage Y/N: 1

Heating: Central,Electric

Heating Y/N: 1

Pets Allowed: No

View: City

Entry Level: 16

Entry Location: 16

Patio and Porch Features: Balcony,Open

Property Attached Y/N: 1

Waterfront Y/N: 1

Stories Total: 48

Rooms & Units Description



Unit Number: 1604

Location Details

County Or Parish: Miami-Dade County

Elementary School: Southside

Middle/Junior School: Shenandoah

High School: Washington; Brooker T

Fees & Taxes

Tax Annual Amount: 7954

Tax Year: 2022

Tax Legal Description: JADE
RESIDENCES AT BRICKELL BAY
CONDO UNIT 1604 UNDIV
0.13812% INT IN COMMON
ELEMENTS OFF REC
22571-3837 COC 22669-1169
09 2004 1

Association Fee: 100

Association Fee Frequency:
Monthly

Association Fee Includes: Association
Management,Amenities,Common Areas,Cable
TV,Internet,Maintenance Grounds,Maintenance
Structure,Other,Parking,Pool(s),Recreation Facilities,Reserve
Fund,Roof,Sewer,Trash,Water

Miscellaneous

Public Survey Township: 1

**Public
Survey
Section:** 39

Syndication Remarks: Brickell's best waterfront building! Enjoy 5-Star urban
upscale living at Jade Brickell Large 1/1, spacious balcony. Upgraded kitchen and
bathrooms

**Year Built
Details:**
Resale

Virtual Tour URL: <https://www.propertypanorama.com/instaview/mia/A11554190>

Courtesy of



Office Name: Xcellence Realty

