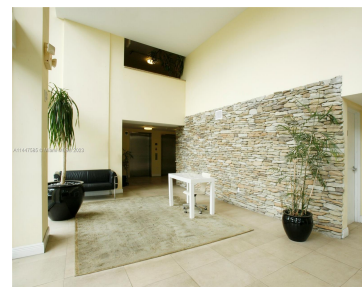


1350 NW 8TH CT A6 MIAMI FL 33136

<https://www.cays.com>



Great opportunity to purchase a fairly new condo! Corner unit One bedroom condo with balcony. Stainless steel appliances, granite countertop. 12 foot ceilings, central A/C, tile floors, Washer and Dryer inside the unit, spacious bedroom with great light & privacy. Impact windows and sliding door. Enjoy Building with pool, secured entrance & gated cover parking. [...]

- 1 bed
- 1 bath
- Condominium
- Residential
- Active
- 797 sq ft

Basics

Bathrooms Full: 1

Category: Residential

Status: Active

Bathrooms: 1 bath

Year built: 2007

Lot Size Units: Square Feet

Type: Condominium

Bedrooms: 1 bed

Area: 797 sq ft



Property details

Total Building Area: 797

Subdivision Name: HIGHLAND PARK LOFTS CONDO

Parcel Number: 01-31-35-093-0040 **Possession:** Closing & Funding

Property Features

Exterior Features:

Balcony,Fence,Security/High Impact Doors

Pool Features: Association

Security Features: Fire Alarm,Key Card Entry,Lobby Secured,Smoke Detector(s)

Architectural Style: High Rise

Construction Materials: Block

Cooling Y/N: 1

Flooring: Ceramic Tile,Tile

Garage Y/N: 1

Heating Y/N: 1

View: City,Garden

Entry Location: 6

Property Attached Y/N: 1

Stories Total: 7

Interior Features: Bedroom on Main Level,First Floor Entry,Handicap Access,Elevator

Parking Features:

Assigned,Attached,Covered,Garage,One Space

Appliances: Dryer,Dishwasher,Electric Water Heater,Microwave,Refrigerator,Washer

Association Amenities: Pool,Trash,Elevator(s)

Cooling: Central Air

Covered Spaces: 1

Garage Spaces: 1

Heating: Central

Pets Allowed: Conditional,Yes

Entry Level: 6

Patio and Porch Features: Balcony,Open

Attached Garage Y/N: 1

Rooms & Units Description

Unit Number: A6

Location Details



County Or Parish: Miami-Dade County

Fees & Taxes

Tax Annual Amount: 2657

Tax Year: 2022

Tax Legal Description: HIGHLAND
PARK LOFTS CONDO UNIT A 6 UNDIV
2.1749% INT IN COMMON ELEMENTS
OFF REC 25718-2915 COC 25770-3967
06 2007 1

Association Fee: 660

Association Fee Frequency:
Monthly

Association Fee Includes: Association
Management,Amenities,Common
Areas,Insurance,Maintenance
Structure,Parking,Pool(s),Reserve
Fund,Sewer,Trash,Water

Miscellaneous

Public Survey Township: 1

**Public
Survey
Section:** 35

Syndication Remarks: Great opportunity! Corner unit with balcony. SS
appliances, granite countertop. 12 foot ceilings, central A/C, tile floors, Washer
and Dryer inside.

**Year Built
Details:**
Effective Year
Built

Virtual Tour URL:

<https://www.propertypanorama.com/instaview/mia/A11447585>

Courtesy of

Office Name: Keller Williams Eagle Realty

