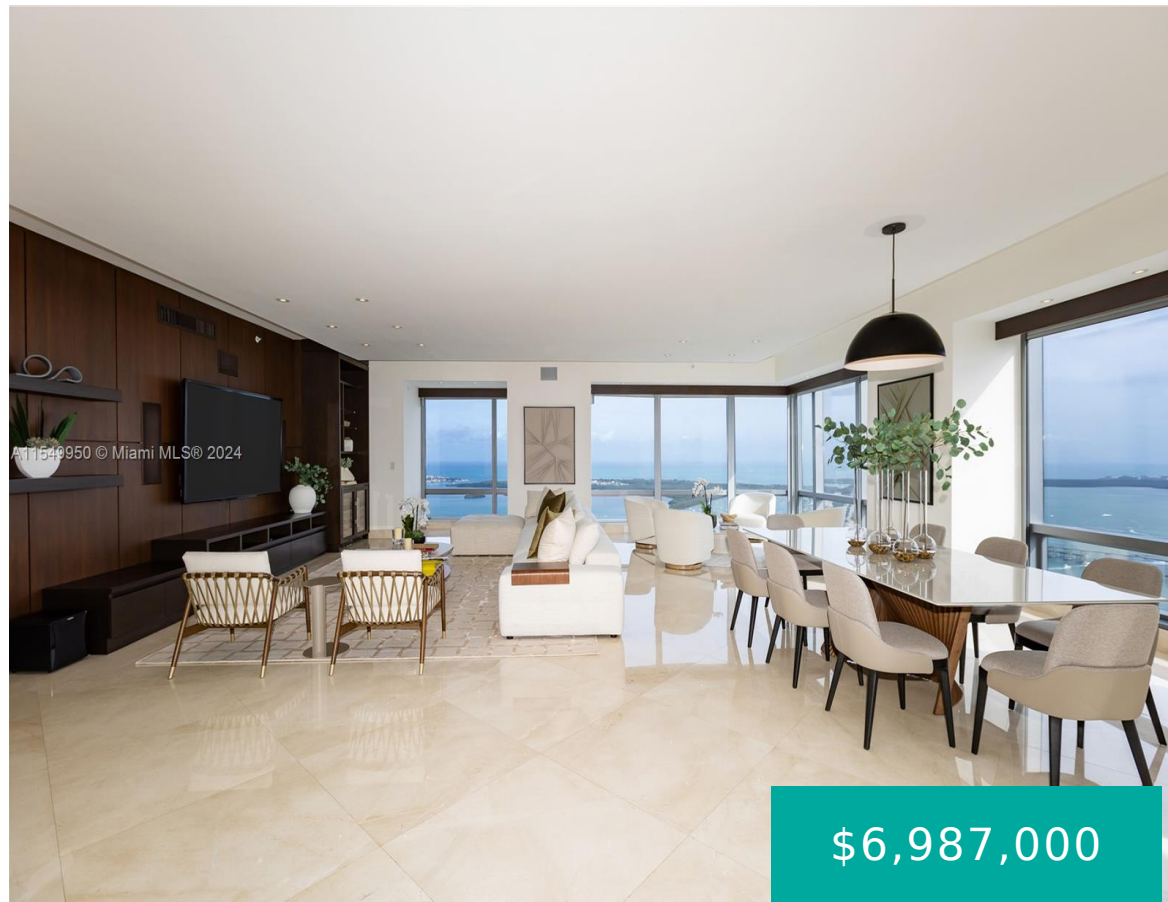
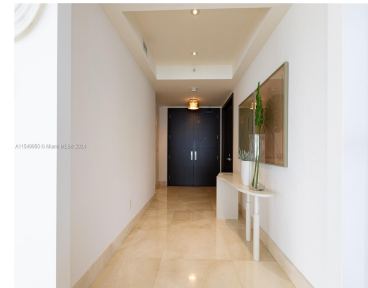
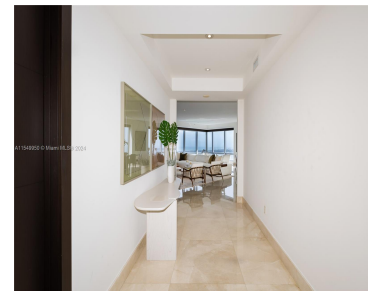


1425 BRICKELL AVE 63F MIAMI FL 33131

<https://www.cays.com>



\$6,987,000



Magnificent Corner Residence unobstructed panoramic ocean and bay views from Key Biscayne to Miami Beach! Best line! Fully Furnished /Turn Key Beautifully Appointed SE Corner unit with entry foyer leading to an open floor plan with floor to ceiling windows offering spectacular water views. Marble floors & Wood floors throughout, custom eat-in kitchen with new [...]

- 3 beds
- 5 baths
- Condominium
- Residential
- Active
- 3566 sq ft

Basics

Bathrooms Half: 1

Lot Size Units: Square Feet

Type: Condominium

Bedrooms: 3 beds

Area: 3566 sq ft

Bathrooms Full: 4

Category: Residential

Status: Active

Bathrooms: 5 baths

Year built: 2003



Property details

Builder Model: F

Subdivision Name: MILLENNIUM TOWER RESIDENC

Possession: Closing & Funding

Total Building Area: 3566

Parcel Number: 01-41-39-076-1780

Living Area Source: Appraiser

Property Features

Exterior Features: Balcony,Security/High Impact Doors

Accessibility Features: Accessible Elevator Installed,Other,Accessible Doors

Window Features: Blinds,Tinted Windows,Impact Glass

Parking Features: Assigned,Attached,Garage,Two or More Spaces,Valet

Appliances: Dryer,Dishwasher,Electric Range,Electric Water Heater,Disposal,Microwave

Association Amenities: Billiard Room,Cabana,Community Kitchen,Fitness Center,Pool,Sauna,Spa/Hot Tub,Storage,Elevator(s)

Cooling: Central Air,Electric

Covered Spaces: 2

Furnished: Furnished

Garage Y/N: 1

Heating Y/N: 1

View: Bay,City

Entry Level: 63

Patio and Porch Features: Balcony,Open

Waterfront Y/N: 1

Stories Total: 70

Interior Features: Built-in Features,Bedroom on Main Level,Closet Cabinetry,Dual Sinks,First Floor Entry,Living/Dining Room,Pantry,Separate Shower,Walk-In Closet(s),Elevator,Bar

Waterfront Features: Bay Front

Pool Features: Association

Security Features: Door Man,Fire Alarm,Lobby Secured,Safe Room Interior,Fire Sprinkler System,Smoke Detector(s)

Architectural Style: High Rise

Construction Materials: Aluminum Siding,Block

Cooling Y/N: 1

Flooring: Marble,Wood

Garage Spaces: 2

Heating: Central,Electric

Pets Allowed: No Pet Restrictions,Yes

View Y/N: 1

Entry Location: 63

Property Attached Y/N: 1

Attached Garage Y/N: 1

Utilities: Cable Available



Rooms & Units Description

Unit Number: 63F

Number of Units in the Community: 186

Location Details

County Or Parish: Miami-Dade County

Fees & Taxes

Tax Annual Amount: 61404

Tax Year: 2023

Tax Legal Description: MILLENNIUM
TOWER RESIDENCES CONDO UNIT 63F
UNDIV 0.008616% INT IN COMMON
ELEMENTS OFF REC 21766-4639

Association Fee: 5444

Association Fee Frequency: Monthly

Association Fee Includes: Association
Management,Amenities,Common
Areas,Parking,Pool(s),Security

Miscellaneous

Public Survey Township: 1

**Public
Survey
Section:** 39

Syndication Remarks: 24/7 hotel service by Four Seasons Hotel

**Year Built
Details:**
Resale

Virtual Tour URL:

<https://www.propertypanorama.com/instaview/mia/A11549950>

Courtesy of



Office Name: KD Prime Properties International, LLC

