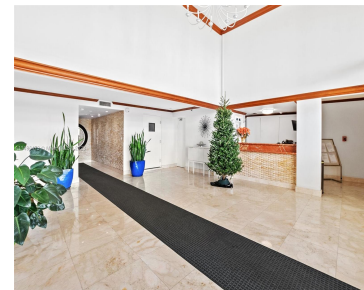
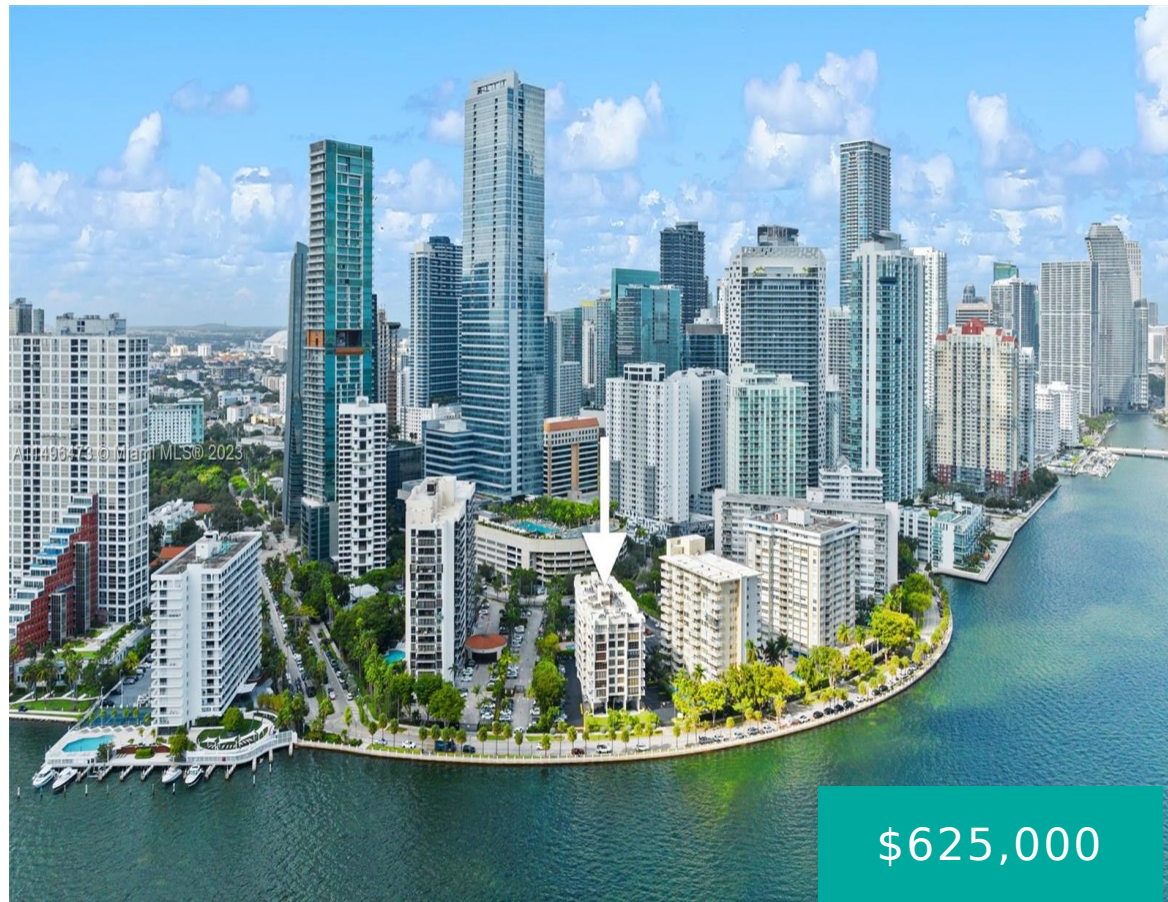


1440 BRICKELL BAY DR 707 MIAMI FL 33131

<https://www.cays.com>



This exquisite condo awaits you in the coveted Brickell Bay Shores, nestled within a charming boutique building. Boasting the best position in the area, this residence features 2 bed/2 baths, offering a perfect blend of convenience. Picture yourself residing in the heart of Brickell, where tranquility meets proximity to the vibrant city life. This exclusive [...]

- 2 beds
- 2 baths
- Condominium
- Residential
- Active
- 986 sq ft

Basics

Bathrooms Full: 2

Category: Residential

Status: Active

Bathrooms: 2 baths

Year built: 1978

Lot Size Units: Square Feet

Type: Condominium

Bedrooms: 2 beds

Area: 986 sq ft



Property details

Total Building Area: 986

Subdivision Name: BRICKELL SHORES CONDO

Parcel Number: 01-41-39-028-0530 **Possession:** Close Of Escrow

Property Features

Building Features: Exterior Lighting

Interior Features: Bedroom on Main Level,Closet
Cabinetry,Living/Dining Room

Window Features: Blinds

Parking Features: Guest,One Space

Appliances: Dryer,Dishwasher,Electric
Range,Microwave,Refrigerator,Washer

Association Amenities: Fitness
Center,Barbecue,Picnic Area,Pool,Elevator(s)

Cooling: Central Air,Electric

Covered Spaces: 1

Garage Spaces: 1

Heating: Central,Electric

Pets Allowed: Conditional,Yes

View Y/N: 1

Entry Location: 7

Property Attached Y/N: 1

Stories Total: 10

Exterior Features:

Balcony,Storm/Security Shutters

Waterfront Features: Bay
Front,Ocean Front

Pool Features: Association

Security Features: Complex
Fenced,Key Card Entry,Security
Guard,Fire Sprinkler System

Architectural Style: High Rise

Construction Materials: Block

Cooling Y/N: 1

Flooring: Carpet

Garage Y/N: 1

Heating Y/N: 1

View: Ocean,Other

Entry Level: 7

Patio and Porch Features:
Balcony,Open

Waterfront Y/N: 1

Utilities: Cable Available

Rooms & Units Description

Unit Number: 707



Location Details

County Or Parish:
Miami-Dade County

Directions: From Brickell Avenue (US1) turn East on 15th Road. Proceed to the end of the block and turn left at the waterfront onto Brickell Bay Drive. Brickell Shores Condo is the second building on the left

Fees & Taxes

Tax Annual Amount: 2472 **Tax Year:** 2023

Tax Legal Description:
BRICKELL SHORES CONDO
UNIT 707 UNDIV 1.19% INT IN
COMMON ELEMENTS OFF REC
10159-0200 OR 19385-1382
1100 1

Association Fee: 788

**Association Fee
Frequency:** Monthly

Association Fee Includes: Amenities,Common Areas,Cable TV,Insurance,Maintenance Grounds,Maintenance Structure,Pool(s),Roof,Sewer,Security,Trash,Water

Miscellaneous

Public Survey Township: 1

**Public
Survey
Section:** 39

Syndication Remarks: Selling Agent commission is 3% less \$299. To request a showing go to showingtime!

**Year Built
Details:**
Resale

Virtual Tour URL:
<https://www.propertypanorama.com/instaview/mia/A11496473>

Courtesy of

Office Name: Carrera Consulting Group Inter

