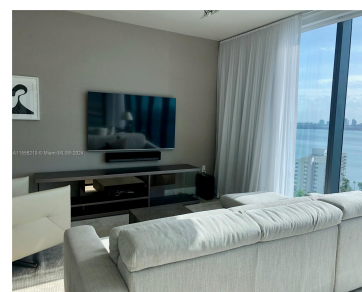
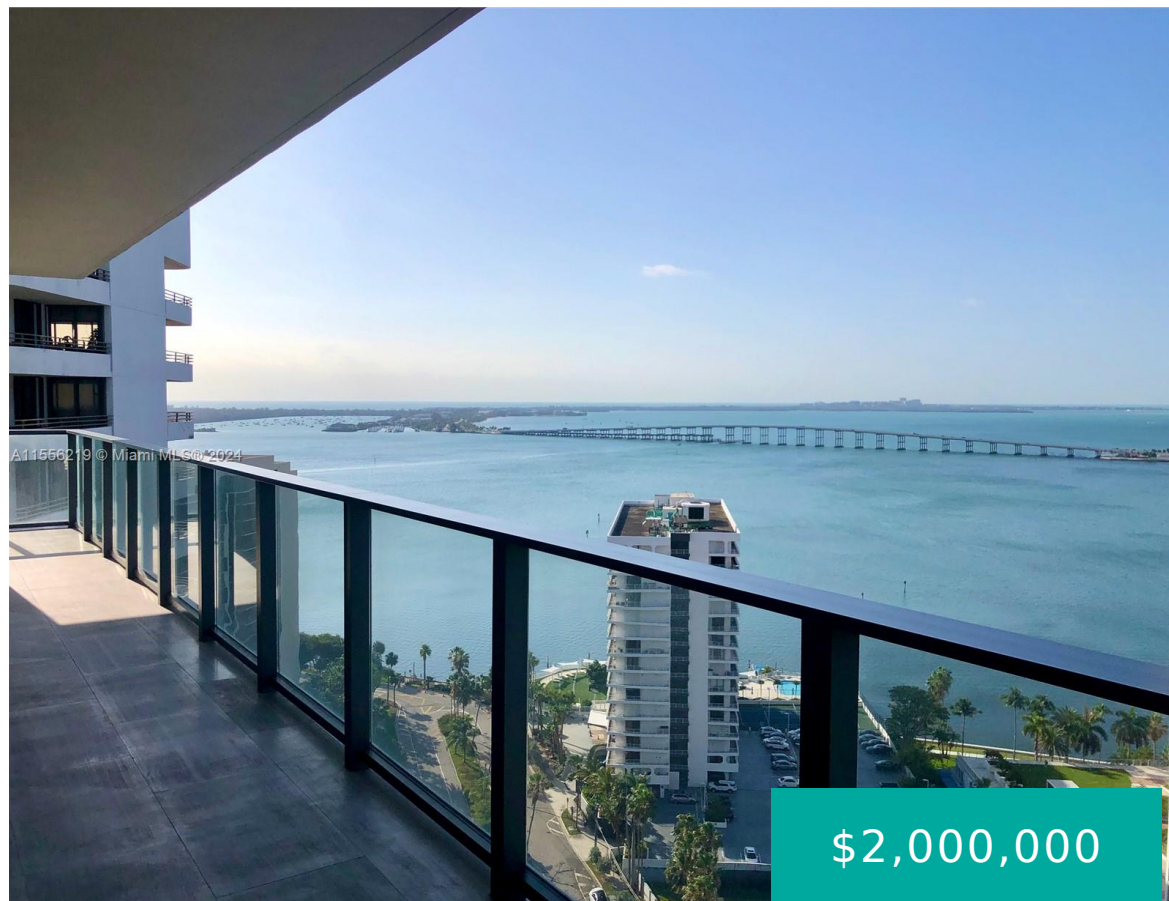


1451 BRICKELL AVE 2203 MIAMI FL 33131

<https://www.cays.com>



Fully furnished beautiful 2 Beds/2.5 Baths SE corner unit at the luxurious Echo Brickell. In the most desirable neighborhood in Miami with breathtaking Bay view. Marble floors, 10â€² floor to ceiling windows, electric blackout and privacy shades, top of the line SubZero, Wolf and Bosch appliances, Italian glass kitchen cabinetry, custom built closets. Expansive balcony [...]

- 2 beds
- 3 baths
- Condominium
- Residential
- Active
- 1137 sq ft

Basics

Bathrooms Half: 1

Lot Size Units: Square Feet

Type: Condominium

Bedrooms: 2 beds

Area: 1137 sq ft

Bathrooms Full: 2

Category: Residential

Status: Active

Bathrooms: 3 baths

Year built: 2017



Property details

Direction Faces: Southeast

Subdivision Name: ECHO BRICKELL CONDO

Parcel Number: 01-41-39-128-0910

Possession: Closing & Funding,Close Of Escrow

Property Features

Exterior Features:

Balcony,Security/High Impact Doors

Interior Features: Closet Cabinetry,Eat-in Kitchen,First Floor Entry,Kitchen Island,Living/Dining Room,Separate Shower,Walk-In Closet(s),Elevator,Bar

Window Features: Blinds,Impact Glass

Parking Features: Covered,Two or More Spaces,Valet

Security Features: Door Man,Elevator Secured,Smoke Detector(s)

Appliances: Dryer,Dishwasher,Electric Range,Disposal,Ice Maker,Microwave,Refrigerator,Self Cleaning Oven,Washer

Architectural Style: High Rise

Association Amenities: Bike Storage,Fitness Center,Other,Spa/Hot Tub,Trash,Elevator(s)

Cooling: Electric

Cooling Y/N: 1

Covered Spaces: 2

Flooring: Marble

Furnished: Furnished

Garage Spaces: 2

Garage Y/N: 1

Heating: Electric

Heating Y/N: 1

New Construction Y/N: 1

Pets Allowed: Conditional,Yes

View: Bay,City,Intercoastal,Water

View Y/N: 1

Entry Level: 22

Entry Location: 22

Patio and Porch Features: Balcony,Open

Property Attached Y/N: 1

Stories Total: 57

Rooms & Units Description

Unit Number: 2203

Location Details



County Or Parish: Miami-Dade County

Directions: On Brickell Ave x SE 14th Ln. Next to Four Seasons Hotel Miami/Brickell. Valet entrance on SE 14th Ln.

Fees & Taxes

Tax Annual Amount: 15911 **Tax Year:** 2023

Tax Legal Description: ECHO BRICKELL CONDO UNIT 2203
UNDIV 0.484% INT IN COMMON
ELEMENTS OFF REC
28880-4047

Association Fee Frequency: Monthly **Association Fee Includes:** Association Management,Amenities,Internet,Maintenance Structure,Parking,Pest Control,Pool(s),Sewer,Security,Trash,Water

Miscellaneous

Development Status: New Construction **Public Survey Township:** 1

Public Survey Section: 39 **Syndication Remarks:** Fully furnished beautiful 2 Beds/2.5 Baths SE corner unit at the luxurious Echo Brickell

Year Built Details: New Construction **Virtual Tour URL:** <https://www.propertypanorama.com/instaview/mia/A11556219>

Courtesy of

Office Name: IHB Brazil Realty LLC

