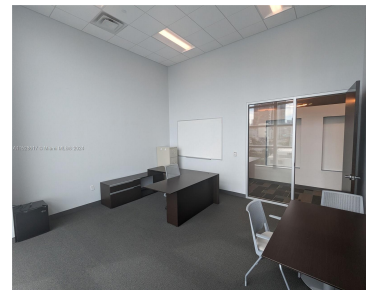
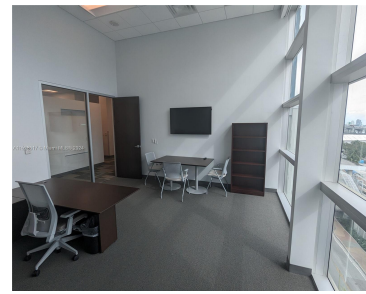


1501 BISCAYNE BLVD D3 MIAMI FL 33132

<https://www.cays.com>



Privately enclosed office 275sq sq feet. 17'+ x 16'+ with Electric shades Facing South East towards Port of Miami Cruise ship views and Downtown Miami skyline. Electricity & Wi-fi included. Top floor corner. Covered garage Parking available. Access to 4 additional conferences rooms, social media content rooms, phone & content filming rooms, fully equipped kitchen, [...]

- Office
- Commercial Lease
- Active

Basics

Lot Size Units: Square Feet

Type: Office

Category: Commercial Lease

Status: Active

Property details



Total Building Area: 25000
Lot Size Square Feet: 100000

Leasable Area: 275
Lot Size Area: 100000

Property Features

Stories: 5

Rooms & Units Description

Unit Number: D3

Location Details

County Or Parish: Miami-Dade County

Miscellaneous

Syndication Remarks:

Privately enclosed window office 275sq sq feet. 17'+ x 16'+ with Electric shades. Electricity & Wi-fi included. SE views of Port of Miami & Skyline.

Virtual Tour URL:

<https://www.propertypanorama.com/instaview/mia/A11528617>

Courtesy of

Office Name: Associates Realty

