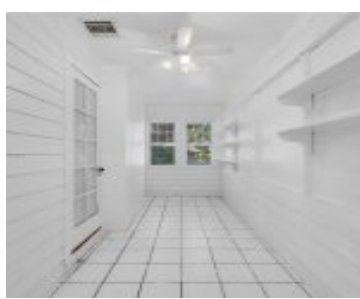


1507 19TH TER MIAMI FL 33145 1507 SW 19TH TER

<https://www.cays.com>



\$850,000

OSCEOLA GROVES PB 8-107 LOTS 28 TO 30 INC BLK 2 LOT SIZE 75.000 X 108 OR 13020-2662 0886 1 Opportunity to remodel or redevelop in Shenandoah, one of Miami's most highly sought after areas, in proximity to Coral Gables, Coconut Grove and Brickell. Area features top rated schools, shopping and entertainment. Property sits on [...]

- 3 beds
- 1, 1 bath
- Residential, SingleFamilyResidence
- Residential, SingleFamilyResidence
- Active
- 1241 sq ft

Basics



Category: Residential, SingleFamilyResidence

Status: Active

Bathrooms: 1, 1 bath

Floors: 1 floor

Lot size: 8100, 8100 sq ft

View: None

County: Miami-Dade

Type: Residential, SingleFamilyResidence

Bedrooms: 3 beds

Half baths: 0 half baths

Area: 1241 sq ft

Year built: 1936

Subdivision Name: OSCEOLA GROVES

Property details

Subdivision Name: OSCEOLA GROVES

Lot Size Square Feet: 8100

Parcel Number: 33145

Property Features

Parking Features: AttachedCarport,Covered

Cooling: CentralAir,Electric

Garage Y/N: 1

Heating Y/N: 1

Stories: 1

Carport Y/N: 1

Cooling Y/N: 1

Heating: Central,Electric

View: None

Location Details

County Or Parish: Miami-Dade

Middle/Junior School: Shenandoah

Zoning Description: 5700

Elementary School: Coral Way

High School: Miami Senior

Building Details



Water Source: Public

Architectural Style: Detached,OneStory

Lot Features: LessThanQuarterAcre **Sewer:** PublicSewer

Construction Materials: Frame **Covered Spaces:** 3

Foundation Details: PillarPostPier **Garage Spaces:** 2

Floor covering: Tile, Wood

Amenities & Features

Pool Features: None

Security Features: SmokeDetectors

Roof: Shingle

Exterior Features: Fence,FruitTrees,Porch

Heating: Central,Electric

Appliances:

Dryer,Dishwasher,ElectricRange,Microwave,Refrigerator,SelfCleaningOven,Washer

Parking Features:

AttachedCarport,Covered

Patio & Porch Features: Open,Porch

Cooling: CentralAir,Electric

Furnished: Unfurnished

Interior Features:

BedroomOnMainLevel,FirstFloorEntry,Attic

Nearby Schools

Middle Or Junior School: Shenandoah

Elementary School: Coral Way

High School: Miami Senior

Expenses, Fees & Taxes

Tax Annual Amount: \$13,703

Tax Year: 2024

Miscellaneous

List Office Name: Compass Florida, LLC.

Listing Terms: Cash

Direction Faces: South



Miscellaneous

Above Grade Finished Area: Miami, FL

Virtual Tour URL: <https://youtu.be/lpK0pDnpckU>

Courtesy of

Office Name: Compass Florida, LLC.

