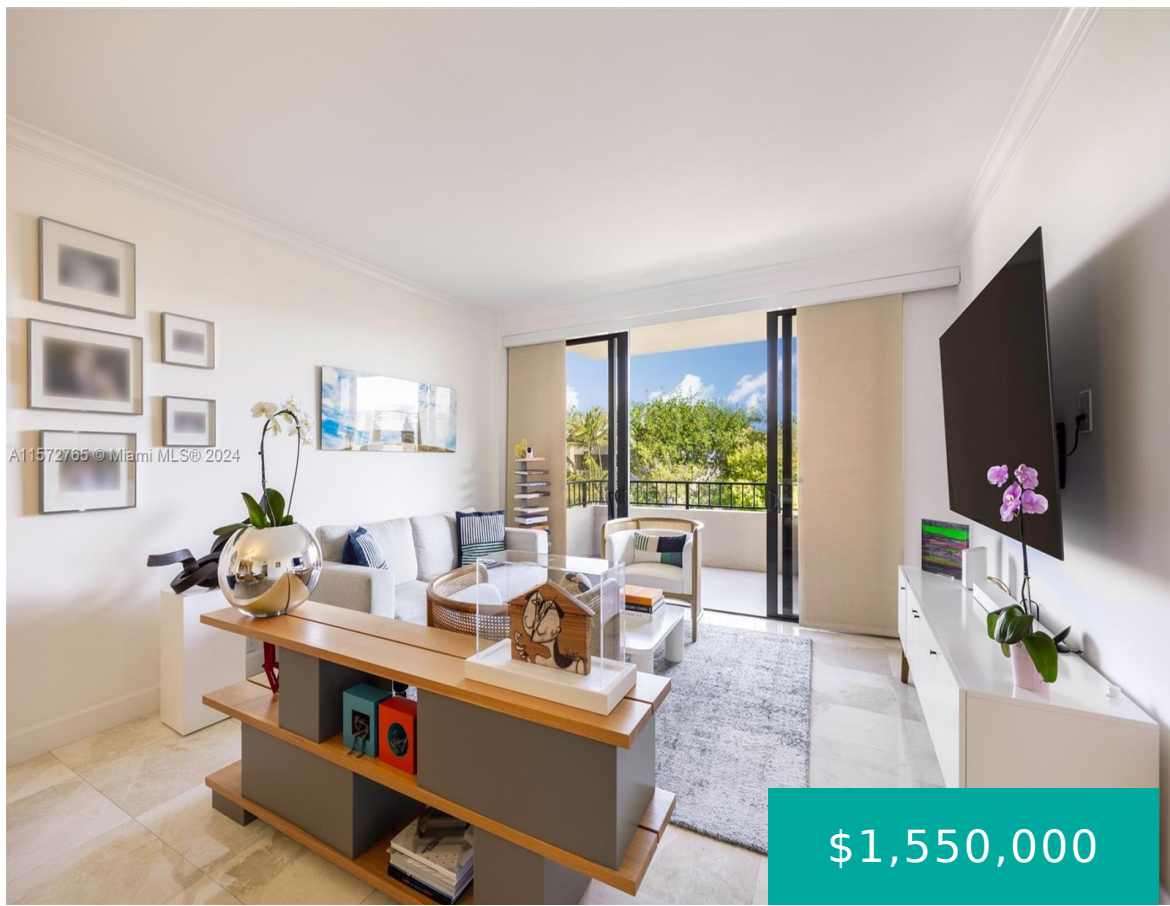


151 CRANDON BLVD KEY BISCAYNE FL 33149 151 CRANDON BLVD 420

<https://www.cays.com>



\$1,550,000



THE EMERALDBAY @ KEY COLONY CONDO UNIT 420 UNDIV .002978% INT IN COMMON ELEMENTS OFF REC 10846-1456 19385-726 OR 20915-4479 12 2002 1 COC 22 Experience coastal luxury living in this expansive 2 Bed 2 Bath + Den unit in Emerald Bay at Key Colony. The spacious layout offers tons of natural light, a large, [...]

- 2 beds
- 2, 2 baths
- Condominium, Residential
- Condominium, Residential
- Active
- 1488 sq ft

Basics



Category: Condominium, Residential

Status: Active

Bathrooms: 2, 2 baths

Floors: 12 floors

Year built: 1980

Subdivision Name: THE EMERALDBAY @ KEY COL

Type: Condominium, Residential

Bedrooms: 2 beds

Half baths: 0 half baths

Area: 1488 sq ft

View: Garden,Ocean

County: Miami-Dade

Property details

Subdivision Name: THE EMERALDBAY @ KEY COL

Parcel Number: 33149

Property Features

Waterfront Features: OceanAccess

Cooling: CentralAir,Electric

Garage Y/N: 1

Heating Y/N: 1

View: Garden,Ocean

Waterfront Y/N: 1

Parking Features: OneSpace,GarageDoorOpener

Cooling Y/N: 1

Heating: Central,Electric

Pets Allowed: Conditional,Yes

View Y/N: 1

Stories Total: 12

Rooms & Units Description

Unit Number: 420

Location Details

County Or Parish: Miami-Dade

Middle/Junior School: Ponce De Leon

Elementary School: Keybiscayne

High School: Coral Gables



Building Details

Architectural Style: HighRise

Covered Spaces: 1

Floor covering: Marble

Construction Materials: Block

Garage Spaces: 1

Amenities & Features

Pool Features: Association

Security Features: ClosedCircuitCameras,SecuredGarageParking,LobbySecured

Association Amenities:

BasketballCourt,BilliardRoom,BikeStorage,Clubhouse,Elevators,FitnessCenter,Library,Playground,Pool,TennisCourts

Cooling: CentralAir,Electric

Heating: Central,Electric

Appliances: Dryer,Dishwasher,ElectricRange,Microwave,Refrigerator,Washer

Parking Features: OneSpace,GarageDoorOpener

Patio & Porch Features: Balcony,Open

Waterfront Features: OceanAccess

Exterior Features: Balcony

Interior Features:

BreakfastBar,BuiltInFeatures,BedroomOnMainLevel,DualSinks,FirstFloorEntry,LivingDiningRoom,MainLevelPrimary,Elevator

Nearby Schools

Middle Or Junior School: Ponce De Leon

High School: Coral Gables

Elementary School: Keybiscayne

Expenses, Fees & Taxes

Association Fee: \$5,617

Tax Year: 2023

Tax Annual Amount: \$14,483

Fees & Taxes

Association Fee: 5617

Miscellaneous

Association Fee Frequency: Quarterly

Listing Terms: Cash,Conventional

List Office Name: Compass Florida, LLC

Attribution Contact: 305-213-6255



Miscellaneous

Above Grade **Virtual Tour URL:**
Finished Area: <https://www.propertypanorama.com/instaview/mia/A11572765>
Key Biscayne, FL

Courtesy of

Office Name: Compass Florida, LLC

