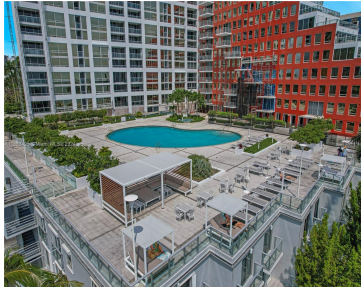
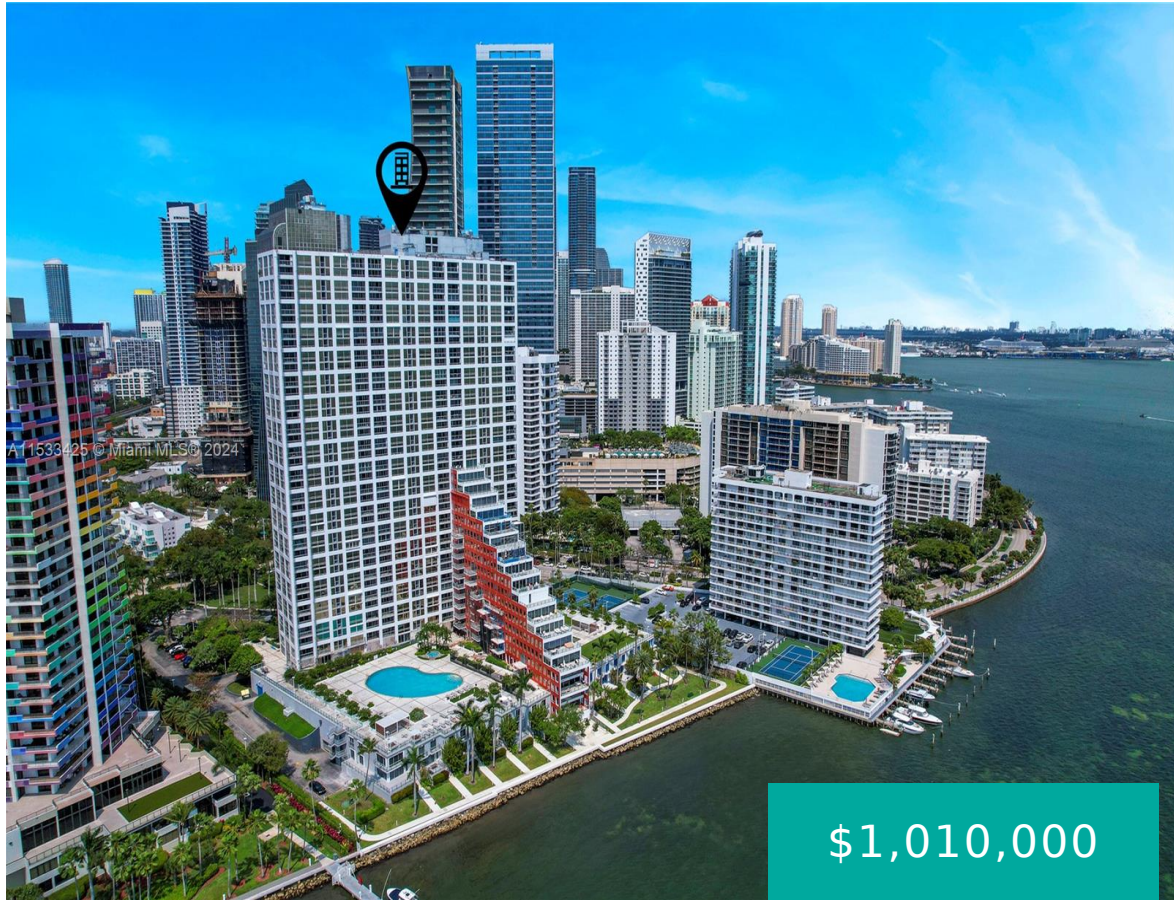


1541 BRICKELL AVE A2102 MIAMI FL 33129

<https://www.cays.com>



The spectacular direct view over Key Biscayne to the south and the view over the Skyrise Brickell building in Brickell are wonderful at night. The units are larger than on the property appraisal record because a Balcony has a legally close with extra leaving area with all windows open.

- 2 beds
- 2 baths
- Condominium
- Residential
- Active
- 1640 sq ft

Basics

Bathrooms Full: 2

Category: Residential

Status: Active

Bathrooms: 2 baths

Year built: 1981

Lot Size Units: Square Feet

Type: Condominium

Bedrooms: 2 beds

Area: 1640 sq ft



Property details

Total Building Area: 1640

Subdivision Name: THE PALACE CONDO

Possession: Close Of Escrow

Disclosures: Special Assessment

Parcel Number: 01-41-39-038-0520

Property Features

Building Features: Exterior Lighting

Interior Features: Breakfast Area,Second Floor Entry,Family/Dining Room,First Floor Entry,Kitchen/Dining Combo,Living/Dining Room,Separate Shower

Pool Features: Association

Security Features: Closed Circuit Camera(s),Complex Fenced,Elevator Secured,Secured Garage/Parking,Key Card Entry,Lobby Secured,Other,Phone Entry

Architectural Style: High Rise

Construction Materials: Aluminum Siding,Brick

Cooling Y/N: 1

Flooring: Ceramic Tile

Garage Y/N: 1

Heating Y/N: 1

View: Bay

Entry Level: 21

Waterfront Y/N: 1

Exterior Features:

Awning(s),Barbecue,Fence,Storm/Security Shutters

Waterfront Features: Bay Front

Parking Features: One Space

Appliances: Dishwasher,Disposal,Microwave

Association Amenities: Boat Dock,Bike Storage,Business Center,Cabana,Fitness Center,Barbecue,Picnic Area,Playground,Pool,Sauna,Spa/Hot Tub,Storage,Tennis Court(s),Elevator(s)

Cooling: Electric

Covered Spaces: 1

Garage Spaces: 1

Heating: Central

Pets Allowed: Size Limit,Yes

View Y/N: 1

Entry Location: 21

Stories Total: 40



Rooms & Units Description

Unit Number: A2102

Location Details

County Or Parish: Miami-Dade County

Fees & Taxes

Tax Annual Amount: 16534

Tax Year: 2023

Tax Legal Description: THE PALACE
CONDO UNIT A2102 UNDIV .38% INT
IN COMMON ELEMENTS OFF REC
11275-1461 OR 19365-0598 11 2000
1 COC 25829-2337 07 2007 1

Association Fee: 2234

Association Fee Frequency:
Monthly

Association Fee Includes: Association
Management,Common
Areas,Insurance,Laundry,Maintenance
Structure,Parking,Security,Trash

Miscellaneous

Public Survey Township: 1

**Public
Survey
Section:** 39

Syndication Remarks: direct open waters view over the Bay from the terraces.
Luxury floor complimentary valet parking for guests, security 24 hours in the
lobbies.

**Year Built
Details:**
Resale

Virtual Tour URL: <https://www.propertypanorama.com/instaview/mia/A11533425>

Courtesy of



Office Name: Fortune Christie's International Real Estate

