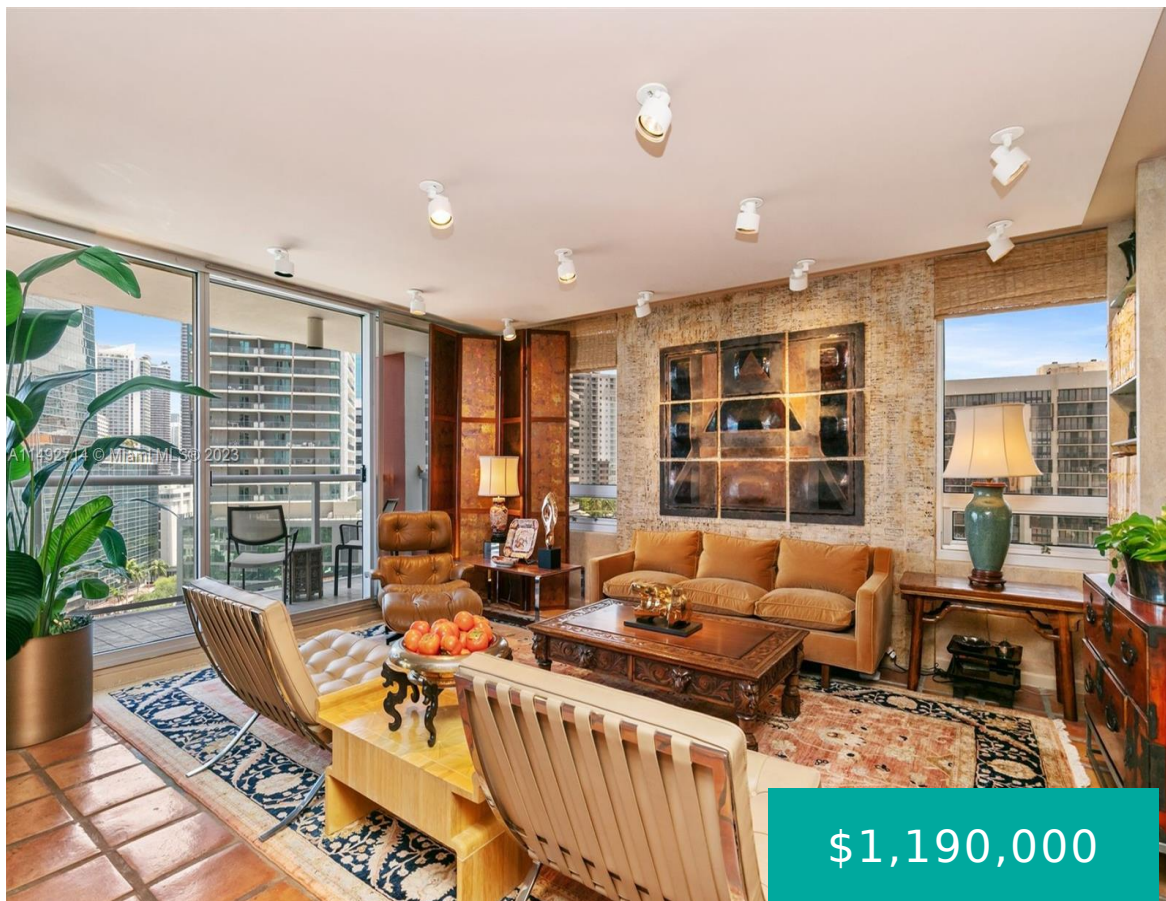


# 1541 BRICKELL AVE C1506 MIAMI FL 33129

<https://www.cays.com>



\$1,190,000



A commodious living and dining accommodation with rich wood custom cabinetry, abundant built-in storage, a private office, a generous master suite, an additional self-contained bedroom suite - A galley kitchen of granite and stainless-steel enhancements - Elegant vintage terra-cotta tile flooring in the public spaces, balcony vistas of lush landscape, property amenities include extensive pool [...]

- 3 beds
- 3 baths
- Condominium
- Residential
- Active
- 1842 sq ft

## Basics

**Bathrooms Half:** 1

**Lot Size Units:** Square Feet

**Type:** Condominium

**Bedrooms:** 3 beds

**Area:** 1842 sq ft

**Bathrooms Full:** 2

**Category:** Residential

**Status:** Active

**Bathrooms:** 3 baths

**Year built:** 1981



---

## Property details

**Total Building Area:** 1842

**Subdivision Name:** THE PALACE CONDO

**Parcel Number:** 01-41-39-038-1860

**Possession:** Close Of Escrow

---

## Property Features

**Exterior Features:** Balcony,Deck,Storm/Security Shutters

**Interior Features:** Built-in Features,Closet Cabinetry,Entrance Foyer,Walk-In Closet(s)

**Waterfront Features:** Bay Front

**Pool Features:** Association,Heated

**Parking Features:** Assigned,Covered,Two or More Spaces

**Security Features:** Door Man,Elevator Secured,Lobby Secured

**Appliances:** Dryer,Dishwasher,Electric Range,Electric Water Heater,Disposal,Ice Maker,Microwave,Refrigerator,Washer

**Architectural Style:** High Rise

**Association Amenities:** Clubhouse,Fitness Center,Barbecue,Picnic Area,Playground,Pool,Tennis Court(s),Trash

**Construction Materials:** Block

**Cooling:** Central Air

**Cooling Y/N:** 1

**Covered Spaces:** 3

**Flooring:** Carpet,Tile

**Garage Spaces:** 3

**Garage Y/N:** 1

**Heating:** Central

**Heating Y/N:** 1

**Pets Allowed:** No

**View:** City,Tennis Court

**Entry Level:** 15

**Entry Location:** 15

**Patio and Porch Features:** Balcony,Deck,Open

**Property Attached Y/N:** 1

**Waterfront Y/N:** 1

**Stories Total:** 40

---

## Rooms & Units Description

**Unit Number:** C1506



---

## Location Details

**County Or Parish:** Miami-Dade County

---

## Fees & Taxes

**Tax Annual Amount:** 6647

**Tax Year:** 2023

**Tax Legal Description:** THE  
PALACE CONDO UNIT C1506  
UNDIV .43% INT IN COMMON  
ELEMENTS OFF REC 11275-1461  
OR 20555-4811 0702 1 COC  
21676-1880 07 2003 5

**Association Fee:** 2952

**Association Fee Frequency:**  
Monthly

**Association Fee Includes:** Association  
Management,Common Areas,Cable  
TV,Internet,Maintenance Grounds,Pest  
Control,Pool(s),Sewer,Security,Trash,Water

---

## Miscellaneous

**Public Survey Township:** 1

**Public  
Survey  
Section:** 39

**Syndication Remarks:** Three Bedroom Spacious, on Brickell Avenue, an Iconic  
Arquitectonica Building

**Year Built  
Details:**  
Resale

**Virtual Tour URL:**

<https://www.propertypanorama.com/instaview/mia/A11492714>

---

## Courtesy of

**Office Name:** Sunny International Realty

