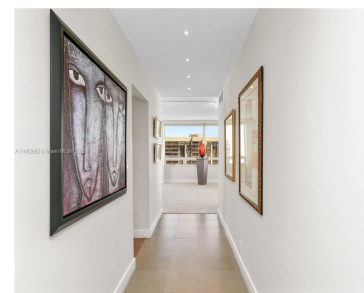


1541 BRICKELL AVE C1805 MIAMI FL 33129

<https://www.cays.com>



Rarely available North Facing 1805 line. Enjoy a 180 degree view of the Brickell skyline & Biscayne Bay from this beautiful designer remodeled home. You have 2 split plan bedrooms w/ en-suite baths & a spacious living/dining room with killer views. In addition there are 2 ample balconies, one overlooking the city & the other [...]

- 2 beds
- 2 baths
- Condominium
- Residential
- Active
- 1697 sq ft

Basics

Bathrooms Full: 2

Category: Residential

Status: Active

Bathrooms: 2 baths

Year built: 1981

Lot Size Units: Square Feet

Type: Condominium

Bedrooms: 2 beds

Area: 1697 sq ft



Property details

Total Building Area: 1697

Subdivision Name: THE PALACE CONDO

Possession: Closing & Funding

Disclosures: Seller Disclosure

Parcel Number: 01-41-39-038-1540

Property Features

Exterior Features:

Balcony,Barbecue,Storm/Security Shutters

Waterfront Features: Bay Front,Navigable Water,Seawall

Pool Features: Association

Security Features: Complex Fenced,Lobby Secured,Security Guard,Fire Sprinkler System

Architectural Style: High Rise

Construction Materials: Block,Other

Cooling Y/N: 1

Flooring: Carpet,Ceramic Tile,Marble

Garage Spaces: 2

Heating: Electric

Pets Allowed: Cats OK,Yes,Pet Restrictions

View Y/N: 1

Entry Location: 18

Property Attached Y/N: 1

Stories Total: 42

Interior Features: Bedroom on Main

Level,Closet Cabinetry,Entrance Foyer,First Floor Entry,Living/Dining Room

Window Features: Blinds

Parking Features: Assigned,Covered,Two or More Spaces

Appliances: Built-In

Oven,Dryer,Dishwasher,Electric Range,Electric Water Heater,Disposal,Refrigerator,Washer

Association Amenities: Fitness

Center,Barbecue,Picnic Area,Pool,Tennis Court(s),Elevator(s)

Cooling: Electric

Covered Spaces: 2

Furnished: Unfurnished

Garage Y/N: 1

Heating Y/N: 1

View: Bay,City,Water

Entry Level: 18

Patio and Porch Features: Balcony,Open

Waterfront Y/N: 1

Rooms & Units Description



Unit Number: C1805

Location Details

County Or Parish: Miami-Dade County

Fees & Taxes

Tax Annual Amount: 6828

Tax Year: 2022

Tax Legal Description: THE
PALACE CONDO UNIT C1805 UNDIV
.40% INT IN COMMON ELEMENTS
OFF REC 11275-1461 OR
19257-1607 08 2000 1

Association Fee: 2747

Association Fee Frequency:
Monthly

Association Fee Includes: Association
Management,Amenities,Common Areas,Cable
TV,Internet,Maintenance
Structure,Sewer,Security,Trash,Water

Miscellaneous

Public Survey Township: 1

**Public
Survey
Section:** 39

Syndication Remarks: Rarely available north facing 180 degree views. Beautifully remodeled large 2/2 in one of Brickell's premier all amenities building

**Year Built
Details:**
Resale

Virtual Tour URL: <https://www.propertypanorama.com/instaview/mia/A11482852>

Courtesy of

Office Name: Abitare International Realty

