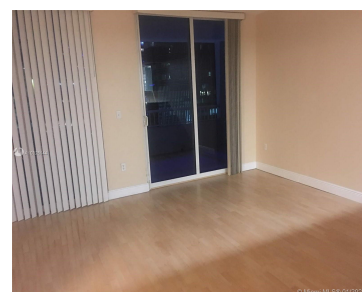
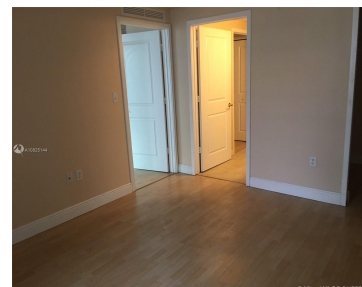


170 SE 14TH ST 1507 MIAMI FL 33131

<https://www.cays.com>



\$465,000

CASH ONLY SEE ATTACHMENTS FOR SELLER DISCLOSURE. OWNER WILL ONLY CONSIDER OFFERS ACCOMPANIED BY SIGNED CONDO RIDER AND SELLER DISCLOSURE. 7 DAY INSPECTION MAX PERIOD. OVEN AND MICROWAVE DO NOT WORK (only stovetop works). West facing unit with enormous balcony from both living room & bedroom. Granite kitchen with stainless steel appliances. Laminate wood floors [...]

- 1 bed
- 1 bath
- Condominium
- Residential
- Active
- 630 sq ft

Basics

Bathrooms Full: 1

Category: Residential

Status: Active

Bathrooms: 1 bath

Year built: 2006

Lot Size Units: Square Feet

Type: Condominium

Bedrooms: 1 bed

Area: 630 sq ft



Property details

Builder Model: CLIPPER

Direction Faces: West

Subdivision Name: THE SAIL

Possession: Subject To Tenant Rights

Total Building Area: 630

Disclosures: Special Assessment

Parcel Number: 01-41-39-100-1200

Property Features

Exterior Features: Balcony

Window Features: Blinds,Impact Glass,Sliding

Parking Features: Assigned,One Space

Appliances: Dryer,Dishwasher,Electric Range,Disposal,Microwave,Refrigerator,Washer

Association Amenities: Fitness Center,Pool,Sauna,Trash,Elevator(s)

Cooling: Central Air,Electric

Covered Spaces: 1

Furnished: Unfurnished

Garage Y/N: 1

Heating Y/N: 1

View: City

Entry Location: 15

Property Attached Y/N: 1

Interior Features: Bedroom on Main Level,Walk-In Closet(s)

Pool Features: Association

Security Features: Secured Garage/Parking,Smoke Detector(s)

Architectural Style: High Rise

Construction Materials: Block

Cooling Y/N: 1

Flooring: Wood

Garage Spaces: 1

Heating: Central,Electric

Pets Allowed: Conditional,Yes

Entry Level: 15

Patio and Porch Features: Balcony,Open

Stories Total: 30

Rooms & Units Description

Unit Number: 1507



Location Details

County Or Parish: Miami-Dade County

Directions: BRICKELL AND 14 ST. ONE BLOCK FROM THE BAY, AND WALKING DISTANCE TO MARY BRICKELL VILLAGE.

Fees & Taxes

Tax Annual Amount: 3654

Tax Year: 2019

Tax Legal Description: THE SAIL CONDO UNIT 1507 UNDIV 1/156 INT IN COMMON ELEMENTS OFF REC 25201-0844 COC 25408-0975 02 2007 1

Association Fee: 647

Association Fee Frequency: Monthly

Association Fee Includes: Association Management,Amenities,Common Areas,Maintenance Structure,Parking,Pool(s),Sewer,Trash,Water

Miscellaneous

Public Survey Township: 1

Public Survey Section: 39

Syndication Remarks: West facing 1/1 at the Sail on Brickell with enormous balcony from both living room & bedroom.

Year Built Details: Resale

Virtual Tour URL: https://youtu.be/i8Q1AQk7h_4

Courtesy of

Office Name: Cervera Real Estate Inc.

