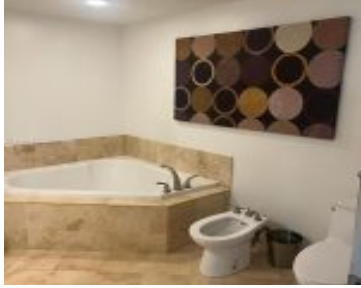


# 1755 HALLANDALE BEACH BLVD HALLANDALE BEACH FL 33009 1755 E HALLANDALE BEACH BLVD 105E

<https://www.cays.com>



DUO CONDOMINIUM EAST UNIT 105E PER CDO CIN# 107228946 Experience Miami luxury in this rare Duo two-story condo. 2-bed, 2.5-bath, 2 parking spaces,exquisite laminate floors. Modern kitchen, new appliances. Downstairs suite with terrace, loft-style master with 2nd terrace, walk-in closet, luxury bath. New AC, fridge. Full-service Duo: heated pool, jacuzzi, gym, tennis. Near restaurants, supermarkets, [...]

- 2 beds
- 2, 3 baths
- Condominium, Residential
- Condominium, Residential
- Active
- 1685 sq ft

## Basics



**Bathrooms Half:** 1

**Type:** Condominium, Residential

**Bedrooms:** 2 beds

**Half baths:** 1 half bath

**Area:** 1685 sq ft

**View:** GolfCourse

**County:** Broward

**Category:** Condominium, Residential

**Status:** Active

**Bathrooms:** 2, 3 baths

**Floors:** 27 floors

**Year built:** 2007

**Subdivision Name:** DUO CONDOMINIUM EAST

---

## Property details

**Subdivision Name:** DUO CONDOMINIUM EAST

**Parcel Number:** 33009

---

## Property Features

**Parking Features:**

Assigned,Covered,TwoOrMoreSpaces,Valet,GarageDoorOpener

**Garage Y/N:** 1

**Heating Y/N:** 1

**View:** GolfCourse

**Cooling:** Other

**Heating:** Central

**Pets Allowed:**  
SizeLimit,Yes

**Stories Total:** 27

---

## Rooms & Units Description

**Unit Number:** 105E

---

## Location Details

**County Or Parish:** Broward

**Middle/Junior School:** Gulfstream

**Elementary School:** Hallandale Elem

**High School:** Hallandale High



---

## Building Details

**Architectural Style:** SplitLevel

**Covered Spaces:** 2

**Levels:** MultiSplit

**Construction Materials:** Block

**Garage Spaces:** 2

**Floor covering:** Laminate, Parquet

---

### Amenities & Features

**Pool Features:** Association, Heated

**Security Features:** ClosedCircuitCameras, DoorMan, KeyCardEntry, LobbySecured, SecurityGuard

**Association Amenities:** BusinessCenter, Clubhouse, Pool, Sauna, SpaHotTub, TennisCourts, Trash

**Cooling:** Other

**Heating:** Central

**Laundry Features:** WasherHookup, DryerHookup

**Parking Features:** Assigned, Covered, TwoOrMoreSpaces, Valet, GarageDoorOpener

**Patio & Porch Features:** Patio

**Window Features:** ImpactGlass

**Exterior Features:** Patio, TennisCourts

**Interior Features:** BedroomOnMainLevel, BreakfastArea, DualSinks, FirstFloorEntry, KitchenDiningCombo, LivingDiningRoom, SeparateShower, UpperLevelPrimary, Loft

**Appliances:** Dryer, Dishwasher, Disposal, Refrigerator, Washer

---

## Nearby Schools

**Middle Or Junior School:** Gulfstream

**High School:** Hallandale High

**Elementary School:** Hallandale Elem

---

## Expenses, Fees & Taxes

**Association Fee:** \$1,300

**Tax Year:** 2023

**Tax Annual Amount:** \$7,671

---

## Fees & Taxes

**Association Fee:** 1300

---

## Miscellaneous



**Association Fee Frequency:** Monthly

**List Office Name:**  
Beachfront Realty Inc

**Listing Terms:** Cash,Conventional,Cryptocurrency,OwnerMayCarry

**Attribution Contact:**  
954-256-6067

---

## Miscellaneous

**Above Grade**

**Virtual Tour URL:**

**Finished Area:**

<https://www.propertypanorama.com/instaview/mia/A11599617>

Hallandale Beach,  
FL

---

## Courtesy of

**Office Name:** Beachfront Realty Inc

