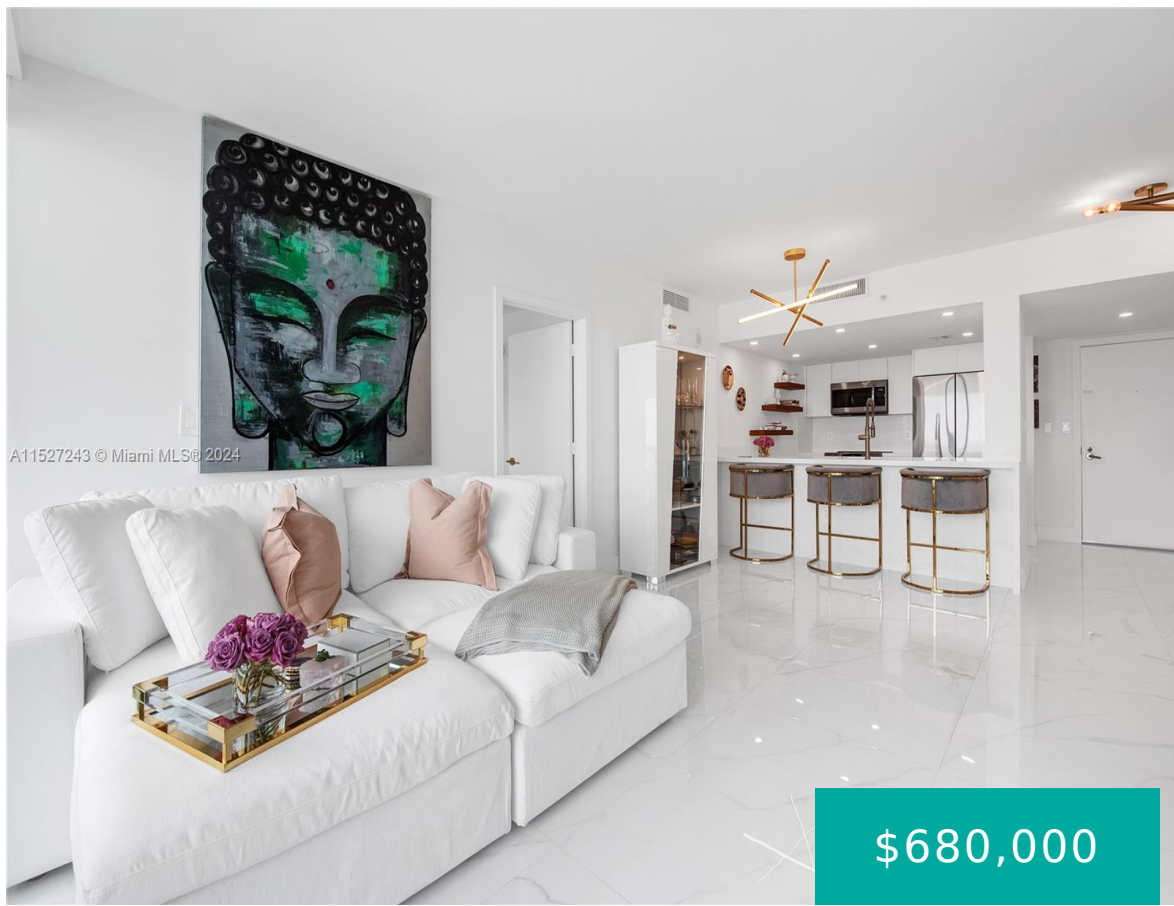


1800 BAYSHORE DR MIAMI FL 33132 1800 N BAYSHORE DR 2910

<https://www.cays.com>



1800 CLUB CONDO UNIT 2910 UNDIV 0.196871% INT IN COMMON ELEMENTS
OFF REC 26060-2296 Step INSIDE this turn-key 2-bed, 2-bath unit, where modern luxury meets breathtaking views. Floor-to-ceiling windows and 32 x 48 calacatta tile bring an abundance of light to the space. The gourmet kitchen features custom cabinetry, sleek quartz countertops, + top-of-the-line appliances, [...]

- 2 beds
- 2, 2 baths
- Condominium, Residential
- Condominium, Residential
- Active
- 1144 sq ft

Basics



Category: Condominium, Residential

Status: Active

Bathrooms: 2, 2 baths

Floors: 42 floors

Year built: 2007

View: City,Pool

County: Miami-Dade

Type: Condominium, Residential

Bedrooms: 2 beds

Half baths: 0 half baths

Area: 1144 sq ft

Property Condition: UpdatedRemodeled

Subdivision Name: 1800 CLUB CONDO

Property details

Subdivision Name: 1800 CLUB CONDO

Parcel Number: 33132

Property Features

Waterfront **Parking Features:**

Features: Attached,Covered,Deeded,ElectricVehicleChargingStations,Garage,Guest,OneSpace,GarageDoorOpener Bayfront

Cooling: Electric
Cooling Y/N: 1

Garage
Y/N: 1
Heating: Central

Heating
Y/N: 1
Pets Allowed: SizeLimit,Yes

View: City,Pool
Stories Total: 42

Rooms & Units Description

Unit Number: 2910

Location Details

County Or Parish: Miami-Dade

Directions: From Biscayne Blvd head east on 18th St, building on the left across from Margarete Pace Park



Building Details

Architectural Style: HighRise

Covered Spaces: 1

Floor covering: Tile

Construction Materials: Block

Garage Spaces: 1

Amenities & Features

Pool Features: Association,Heated

Security Features: SecuredGarageParking,KeyCardEntry,FireSprinklerSystem,SmokeDetectors

Accessibility Features: AccessibleElevatorInstalled,AccessibleEntrance

Waterfront Features: Bayfront

Window Features: Blinds,ImpactGlass

Electric: Fuses

Furnished: Unfurnished

Interior Features: ClosetCabinetry,DualSinks,FirstFloorEntry,HandicapAccess,SplitBedrooms,WalkInClosets,Elevator

Parking Features:

Attached,Covered,Deeded,ElectricVehicleChargingStations,Garage,Guest,OneSpace,GarageDoorOpener

Patio & Porch Features: Balcony,Open

Association Amenities:

BilliardRoom,BikeStorage,BusinessCenter,Clubhouse,Elevators,FitnessCenter,Pool,Sauna,Storage

Utilities: CableAvailable

Cooling: Electric

Exterior Features: Balcony,SecurityHighImpactDoors

Heating: Central

Appliances:

Dryer,Dishwasher,ElectricRange,Disposal,Microwave,Refrigerator,SelfCleaningOven,Washer

Expenses, Fees & Taxes

Association Fee: \$785

Tax Year: 2023

Tax Annual Amount: \$9,226

Fees & Taxes

Association Fee: 785

Miscellaneous

Association Fee Frequency: Monthly **List Office Name:** The Inside Network

Listing Terms: Cash,Conventional

Miscellaneous



Above Grade Finished
Area: Miami, FL

Virtual Tour URL: <https://1800club-2910.insidenetworkco.com/>

Courtesy of

Office Name: The Inside Network

