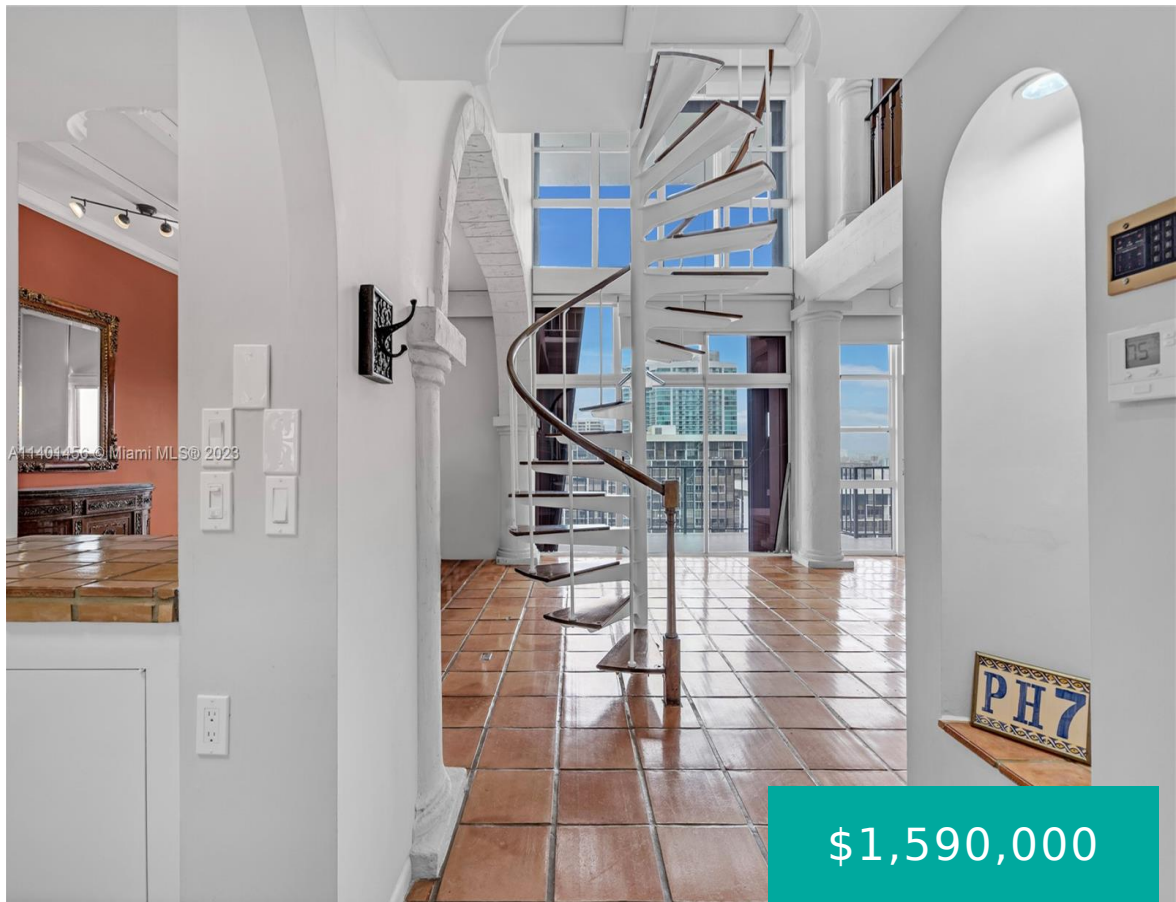
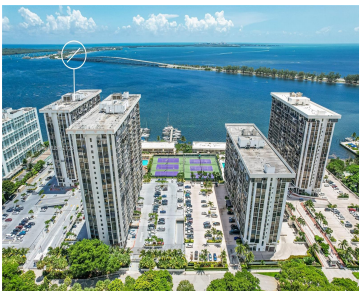


1865 BRICKELL AVE APHVII MIAMI FL 33129

<https://www.cays.com>



\$1,590,000



Boat slip included! Incredible opportunity for buyers with a vision. The PH is being sold “AS-IS” allowing buyers the freedom to transform the space according to your style. Residence offers an unrivaled lifestyle with private boat slip & 3 parking spaces. Breathtaking views of the city skyline & sparkling waters create an awe-inspiring backdrop. 2,721sf [...]

- 3 beds
- 3 baths
- Condominium
- Residential
- Active
- 2721 sq ft

Basics

Bathrooms Full: 3
Category: Residential
Status: Active
Bathrooms: 3 baths
Year built: 1975

Lot Size Units: Square Feet
Type: Condominium
Bedrooms: 3 beds
Area: 2721 sq ft



Property details

Total Building Area: 2721

Disclosures: Flood Plain Disclosure

Parcel Number: 01-41-39-022-2600

Direction Faces: South

Subdivision Name: BRICKELL PLACE CONDO

Possession: Closing & Funding

Property Features

Exterior Features: Balcony,Tennis Court(s),Storm/Security Shutters

Waterfront Features: Bay Front,Ocean Front

Pool Features: Association

Security Features: Key Card Entry,Lobby Secured,Security Guard

Architectural Style: High Rise,Penthouse

Construction Materials: Block

Cooling Y/N: 1

Flooring: Marble,Tile

Garage Y/N: 1

Heating Y/N: 1

View: Bay,Ocean,Water

Entry Level: 23

Patio and Porch Features: Balcony,Open

Waterfront Y/N: 1

Stories Total: 23

Interior Features: Built-in Features,Bedroom on Main Level,First Floor Entry,High Ceilings,Living/Dining Room,Main Living Area Entry Level,Upper Level Primary,Bar

Window Features: Blinds,Drapes

Parking Features: Attached,Covered,Garage,Two or More Spaces,Valet

Appliances: Dryer,Dishwasher,Electric Range,Microwave,Refrigerator,Washer

Association Amenities: Basketball Court,Boat Dock,Bike Storage,Business Center,Clubhouse,Fitness Center,Barbecue,Picnic Area,Playground,Pool,Sauna,Tennis Court(s),Elevator(s)

Cooling: Central Air,Electric

Covered Spaces: 3

Garage Spaces: 3

Heating: Central,Electric

Pets Allowed: No

View Y/N: 1

Entry Location: 23

Property Attached Y/N: 1

Attached Garage Y/N: 1



Rooms & Units Description

Unit Number: APHVII

Location Details

County Or Parish: Miami-Dade County

Middle/Junior School: Ponce De Leon

Elementary School: Coral Way

High School: Miami Senior

Fees & Taxes

Tax Annual Amount: 9310

Tax Year: 2022

Tax Legal Description: BRICKELL
PLACE CONDO UNIT A-PH-VII UNDIV
.334% INT IN COMMON ELEMENTS
CLERKS FILE 75R 258076 OR
14980-1938 0391 5 COC 21736-4442
10 2003 1

Association Fee: 1350

Association Fee Frequency: Monthly

Association Fee Includes:
Amenities,Laundry,Maintenance
Structure,Parking,Pool(s),Recreation
Facilities,Sewer,Security,Trash,Water

Miscellaneous

Public Survey Township: 1

Public
Survey
Section: 39

Syndication Remarks: Incredible opportunity for buyers with a vision.

Year Built
Details:
Resale

Virtual Tour URL:

<https://www.propertypanorama.com/instaview/mia/A11401456>





Courtesy of

Office Name: Compass Florida LLC

