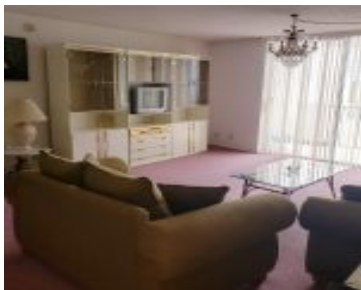


1865 OCEAN DR HALLANDALE BEACH FL 33009 1865 S OCEAN DR 19E

<https://www.cays.com>



PRINCE GEORGE ARMS CONDO UNIT 19E PER CDO BK/PG: 5924/623 REDUCED
!!!!LARGEST 2 BEDROOM UNIT IN THE AREA UNDER Very spacious 2
bedrooms 2 baths corner high floor condo on the intercoastal with some
ocean views across from the beach in Hollywood . This unit has 2 Huge walk
in closets, utility closet,pantry,2 linen closets [...]

- 2 beds
- 2, 2 baths
- Condominium, Residential
- Condominium, Residential
- Active
- 1710 sq ft

Basics



Category: Condominium, Residential

Status: Active

Bathrooms: 2, 2 baths

Floors: 20 floors

Year built: 1974

Subdivision Name: PRINCE GEORGE ARMS CONDO

Type: Condominium, Residential

Bedrooms: 2 beds

Half baths: 0 half baths

Area: 1710 sq ft

View: Intercoastal

County: Broward

Property details

Subdivision Name: PRINCE GEORGE ARMS CONDO

Parcel Number: 33009

Property Features

Building Features: ExteriorLighting

Parking Features:

Assigned,Covered,Underground,OneSpace,Valet

Cooling Y/N: 1

Heating: Central,Electric

Pets Allowed: SizeLimit,Yes

Waterfront Y/N: 1

Waterfront Features:

IntracoastalAccess

Cooling: CentralAir,Electric

Garage Y/N: 1

Heating Y/N: 1

View: Intercoastal

Stories Total: 20

Rooms & Units Description

Unit Number: 19E

Location Details

County Or Parish: Broward



Building Details

Architectural Style: HighRise

Covered Spaces: 1

Floor covering: Carpet, CeramicTile

Construction Materials: Block

Garage Spaces: 1

Amenities & Features

Pool Features: Heated

Security Features:

ElevatorSecured,LobbySecured

Association Amenities:

FitnessCenter,Laundry,Other,Pool,Elevators

Cooling: CentralAir,Electric

Furnished: Furnished

Features: ExteriorLighting

Laundry Features: CommonArea

Parking Features:

Assigned,Covered,Underground,OneSpace,Valet

Patio & Porch Features: Balcony,Open

Waterfront Features: IntracoastalAccess

Exterior Features: Balcony

Heating: Central,Electric

Interior Features:

BuiltInFeatures,ClosetCabinetry,Other

Appliances:

Dishwasher,ElectricRange,Refrigerator

Expenses, Fees & Taxes

Association Fee: \$1,226

Tax Year: 2022

Tax Annual Amount: \$6,536

Fees & Taxes

Association Fee: 1226



Miscellaneous

Association Fee Frequency: Monthly **List Office Name:** Citywide Realty Inc

Listing Terms: Cash,Conventional

Miscellaneous

Above Grade

Finished Area:
Hallandale Beach,
FL

Virtual Tour URL:

<https://www.propertypanorama.com/instaview/mia/A11396976>

Courtesy of

Office Name: Citywide Realty Inc

