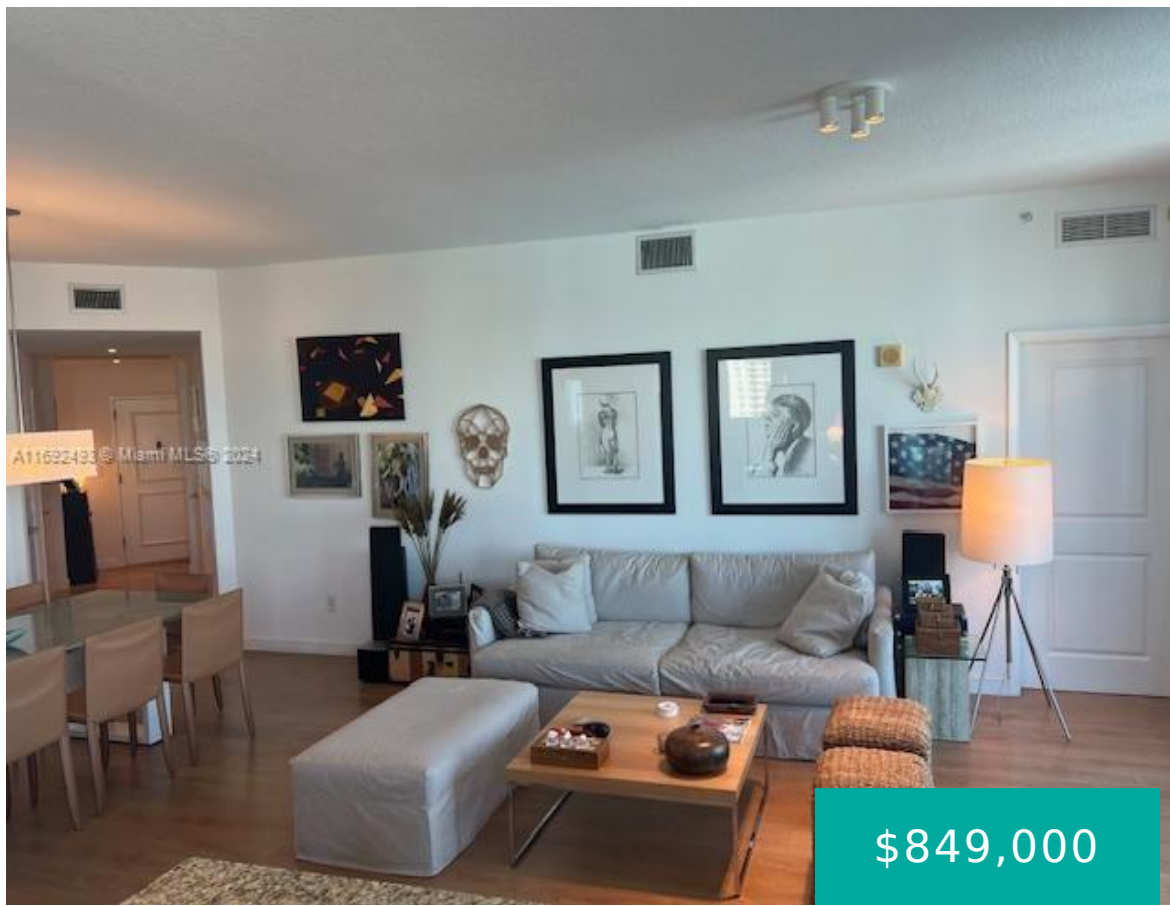


1945 OCEAN DR HALLANDALE BEACH FL 33009 1945 S OCEAN DR 1108

<https://www.cays.com>



OCEAN MARINE YACHT CLUB CONDO UNIT 1108 PER CDO BK/PG: 44862/1984
Ocean Marine Yacht Club / Hallandale Beach/3 Beds/2.5 Baths/1,630 SQ.ft / 2 parking space/ Direct Intracoastal view, walking distance to the beach, Open Kitchen with stainless steal appliances and granite counter tops. Building features: Heated Pool, Fitness Center, Marina, and much more. Call Listing [...]

- 3 beds
- 2, 3 baths
- Condominium, Residential
- Condominium, Residential
- Active
- 1738 sq ft

Basics



Bathrooms Half: 1

Category: Condominium, Residential

Type: Condominium, Residential **Status:** Active

Bedrooms: 3 beds

Bathrooms: 2, 3 baths

Half baths: 1 half bath

Floors: 0 floors

Area: 1738 sq ft

Year built: 2007

View: Intercoastal

Subdivision Name: OCEAN MARINE YACHT CLUB C

County: Broward

Property details

Subdivision Name: OCEAN MARINE YACHT CLUB C

Parcel Number: 33009

Property Features

Waterfront Features: IntracoastalAccess

Parking Features: TwoOrMoreSpaces,Valet

Cooling: CentralAir

Cooling Y/N: 1

Garage Y/N: 1

Heating: Other

Pets Allowed: No

View: Intercoastal

Waterfront Y/N: 1

Rooms & Units Description

Unit Number: 1108

Location Details

County Or Parish: Broward

Elementary School: Hallandale Elem

Middle/Junior School: Gulfstream

High School: Hallandale High



Building Details

Architectural Style: HighRise

Covered Spaces: 2

Floor covering: Laminate

Construction Materials: Block

Garage Spaces: 2

Amenities & Features

Parking Features:

TwoOrMoreSpaces,Valet

Patio & Porch Features: Balcony,Open

Waterfront Features: IntracoastalAccess

Exterior Features: Balcony

Interior Features: WalkInClosets,Elevator

Appliances:

Dishwasher,Disposal,Microwave,Refrigerator

Security Features:

ClosedCircuitCameras,ElevatorSecured,FireAlarm,LobbySecured,FireSprinklerSystem

Association Amenities: FitnessCenter,Pool,Elevators

Cooling: CentralAir

Heating: Other

Laundry Features: WasherHookup,DryerHookup

Nearby Schools

Middle Or Junior School: Gulfstream

High School: Hallandale High

Elementary School: Hallandale Elem

Expenses, Fees & Taxes

Association Fee: \$1,510

Tax Year: 2024

Tax Annual Amount: \$9,423

Fees & Taxes

Association Fee: 1510



Miscellaneous

Association Fee Frequency: Monthly **List Office Name:** Intraproperties Inc.

Listing Terms: Cash,Conventional

Miscellaneous

Above Grade **Virtual Tour URL:**
Finished Area: <https://www.propertypanorama.com/instaview/mia/A11692493>
Hallandale Beach,
FL

Courtesy of

Office Name: Intraproperties Inc.

