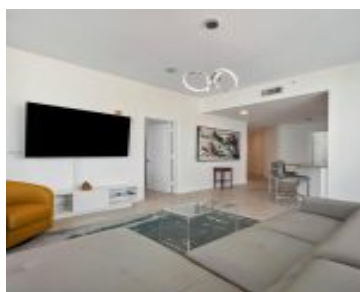


1945 OCEAN DR HALLANDALE BEACH FL 33009 1945 S OCEAN DR 1114

<https://www.cays.com>



OCEAN MARINE YACHT CLUB CONDO UNIT 1114 PER CDO BK/PG: 44862/1984
New Price Adjustment... Come to Ocean Marina Yacht Club... a Wonderful unit on the 11th floor over looking Ocean Drive and Hallandale Skyscrapers... 2 bedroom and 2 full bath with Washer and Dyers in the unit, Owners Suite with Tub and separate Shower... Come [...]

- 2 beds
- 2, 2 baths
- Condominium, Residential
- Condominium, Residential
- Active
- 1341 sq ft

Basics



Category: Condominium, Residential

Status: Active

Bathrooms: 2, 2 baths

Floors: 28 floors

Year built: 2007

Subdivision Name: OCEAN MARINE YACHT CLUB C

Type: Condominium, Residential

Bedrooms: 2 beds

Half baths: 0 half baths

Area: 1341 sq ft

View: Bay, City, Intercoastal

County: Broward County

Property details

Subdivision Name: OCEAN MARINE YACHT CLUB C

Parcel Number: 33009

Property Features

Waterfront Features: BayFront

Cooling: CentralAir, Electric

Heating: Central, Electric

Pets Allowed: SizeLimit, Yes

View Y/N: 1

Stories Total: 28

Parking Features: Assigned, Two or More Spaces

Cooling Y/N: 1

Heating Y/N: 1

View: Bay, City, Intercoastal

Waterfront Y/N: 1

Rooms & Units Description

Unit Number: 1114

Location Details

County Or Parish:
Broward County

Directions: Hallandale Beach Blvd East to Ocean Drive turn south to Ocean Marine Yacht Club on your right



Building Details

Architectural Style: HighRise

Construction Materials: Block,Other,Stucco

Floor covering: Carpet

Amenities & Features

Parking Features: Assigned,TwoorMoreSpaces

Security Features:
ComplexFenced,DoorMan,SecuredGarageParking

Patio & Porch Features: Balcony,Open

Association Amenities: Clubhouse,Elevators,FitnessCenter

Waterfront Features: BayFront

Utilities: CableAvailable

Cooling: CentralAir,Electric

Exterior Features: Balcony

Heating: Central,Electric

Interior Features:
BedroomonMainLevel,DualSinks,LivingDiningRoom,SeparateShower

Appliances:

Dryer,Dishwasher,Disposal,Microwave,Refrigerator

Expenses, Fees & Taxes

Association Fee: \$1,181

Tax Annual Amount: \$11,685

Tax Year: 2023

Fees & Taxes

Association Fee: 1181

Miscellaneous

Association Fee Frequency: Monthly

List Office Name: World Impact Real Estate

Listing Terms: Cash,Conventional,VALoan



Miscellaneous

Above Grade

Finished Area:
Hallandale Beach,
FL

Virtual Tour URL:

<https://www.propertypanorama.com/instaview/mia/A11576698>

Courtesy of

Office Name: World Impact Real Estate

