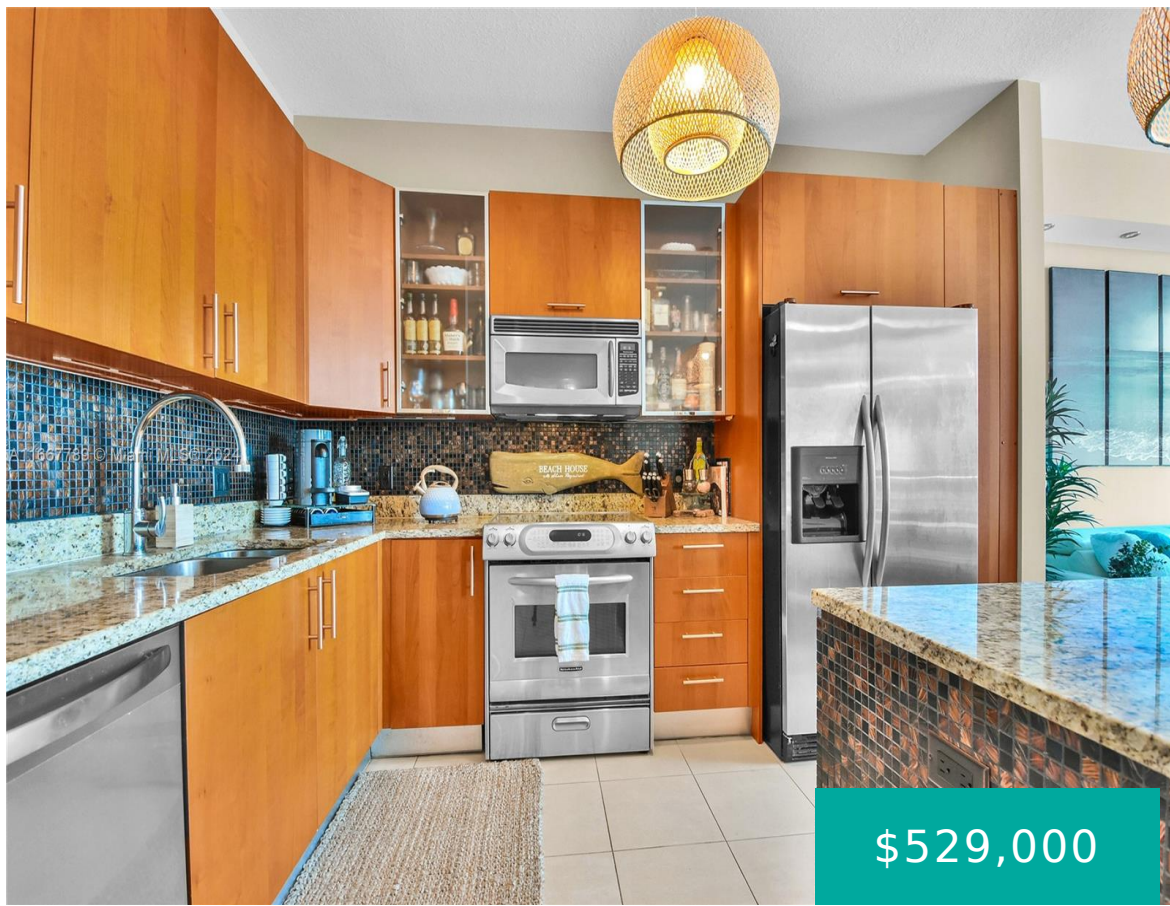


# 1945 OCEAN DR HALLANDALE BEACH FL 33009 1945 S OCEAN DR 2311

<https://www.cays.com>



\$529,000



OCEAN MARINE YACHT CLUB CONDO UNIT 2311 PER CDO BK/PG: 44862/1984  
This property is an upgraded and turn key 1 bedroom and den unit on a high floor at Ocean Marine Yacht Club that combines a less dense building with luxury living. The apartment contains plenty of natural light and breathtaking intracoastal, ocean & city [...]

- 1 bed
- 1, 2 bath
- Condominium, Residential
- Condominium, Residential
- Active
- 875 sq ft

## Basics



**Bathrooms Half:** 1

**Category:** Condominium, Residential

**Type:** Condominium, Residential **Status:** Active

**Bedrooms:** 1 bed

**Bathrooms:** 1, 2 bath

**Half baths:** 1 half bath

**Floors:** 32 floors

**Area:** 875 sq ft

**Year built:** 2007

**View:** Ocean

**Subdivision Name:** OCEAN MARINE YACHT CLUB C

**County:** Broward

---

## Property details

**Subdivision Name:** OCEAN MARINE YACHT CLUB C

**Parcel Number:** 33009

---

## Property Features

**Building Features:** ExteriorLighting

**Waterfront Features:** IntracoastalAccess

**Parking Features:** Assigned,Covered,Guest,Valet **Cooling:** CentralAir

**Cooling Y/N:** 1

**Garage Y/N:** 1

**Heating:** Central

**Heating Y/N:** 1

**Pets Allowed:** DogsOk,Yes

**View:** Ocean

**View Y/N:** 1

**Waterfront Y/N:** 1

**Stories Total:** 32

---

## Rooms & Units Description

**Unit Number:** 2311

---

## Location Details

**County Or Parish:** Broward



---

## Building Details

**Construction Materials:** Block

**Garage Spaces:** 2

**Covered Spaces:** 2

**Floor covering:** Tile

---

## Amenities & Features

**Parking Features:** Assigned,Covered,Guest,Valet

**Association Amenities:**  
BilliardRoom,Elevators,FitnessCenter

**Cooling:** CentralAir

**Heating:** Central

**Interior Features:** BuiltInFeatures,Other

**Security Features:**  
DoorMan,ElevatorSecured

**Waterfront Features:**  
IntracoastalAccess

**Exterior Features:** Other

**Features:** ExteriorLighting

**Appliances:** Dishwasher

---

## Expenses, Fees & Taxes

**Association Fee:** \$795

**Tax Year:** 2023

**Tax Annual Amount:** \$8,979

---

## Fees & Taxes

**Association Fee:** 795

---

## Miscellaneous

**Association Fee Frequency:** Monthly **List Office Name:** One Sotheby's International Realty

**Listing Terms:** Cash,Conventional,FHA



---

## Miscellaneous

**Above Grade**

**Finished Area:**  
Hallandale Beach,  
FL

**Virtual Tour URL:**

<https://www.propertypanorama.com/instaview/mia/A11667789>

---

## Courtesy of

**Office Name:** One Sotheby's International Realty

