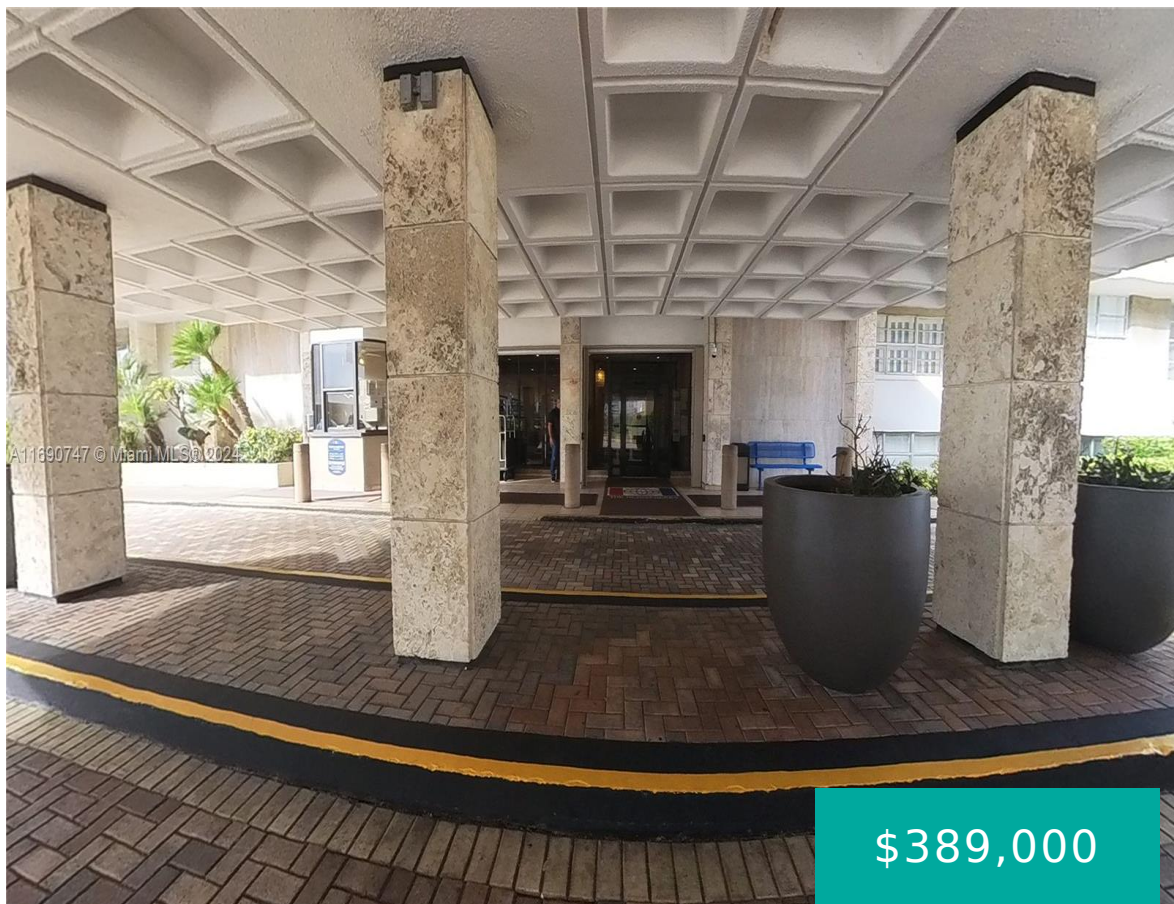


1965 OCEAN DR HALLANDALE BEACH FL 33009 1965 S OCEAN DR 7E

<https://www.cays.com>



\$389,000



THE HEMISPHERES CONDO UNIT 7 E BAY NORTH BLDG PER CDO BK/PG:
4165/352 Stunning 1-Bedroom Waterfront Condo with Resort-Style Amenities
1965 S Ocean Dr, Unit 7E, Hallandale Beach, FL 33009 Discover unparalleled luxury and convenience in this beautifully located 1-bedroom, 1-bathroom condo on the 7th floor, offering breathtaking views of the pool, bay, and ocean. [...]

- 1 bed
- 1, 1 bath
- Condominium, Residential
- Condominium, Residential
- Active
- 798 sq ft

Basics



Category: Condominium, Residential
Status: Active
Bathrooms: 1, 1 bath
Floors: 23 floors
Year built: 1970
Subdivision Name: HEMISPHERES CONDO

Type: Condominium, Residential
Bedrooms: 1 bed
Half baths: 0 half baths
Area: 798 sq ft
View: Intercoastal,Ocean,Pool,Water
County: Broward

Property details

Subdivision Name: HEMISPHERES CONDO

Parcel Number: 33009

Property Features

Waterfront Features:
IntracoastalAccess,OceanFront

Cooling: CentralAir,CeilingFans

Garage Y/N: 1

Heating Y/N: 1

View:
Intercoastal,Ocean,Pool,Water

Waterfront Y/N: 1

Parking Features:
Covered,Underground,Open,Other,TwoOrMoreSpaces,Valet

Cooling Y/N: 1

Heating: Central

Pets Allowed: DogsOk,Yes

View Y/N: 1

Stories Total: 23

Rooms & Units Description

Unit Number: 7E

Location Details

County Or Parish: Broward
Directions: Miami Int'l Airport: Take FL-112 E to I-95 N. Exit 18 to Hallandale Beach Blvd, head east 2.5 miles, then turn right on S Ocean Dr. From Fort Lauderdale Airport: Take US-1 S to A1A S (S Ocean Dr) for 5 miles.



Building Details

Architectural Style: HighRise

Covered Spaces: 1

Floor covering: CeramicTile

Construction Materials: Block

Garage Spaces: 1

Amenities & Features

Pool Features: Association

Security Features:

ClosedCircuitCameras,ComplexFenced,Intercom,KeyCardEntry,LobbySecured,FireSprinklerSystem

Association Amenities: BoatDock,Marina,Clubhouse,Pool,Elevators

Cooling: CentralAir,CeilingFans

Heating: Central

Appliances: Other

Parking Features:

Covered,Underground,Open,Other,TwoOrMoreSpaces,Valet

Patio & Porch Features: Balcony,Deck,Open

Waterfront Features: IntracoastalAccess,OceanFront

Exterior Features: Balcony,Barbecue,Courtyard,Deck

Interior Features:

BedroomOnMainLevel,FamilyDiningRoom,FirstFloorEntry,Pantry

Expenses, Fees & Taxes

Association Fee: \$625

Tax Year: 2024

Tax Annual Amount: \$4,728

Fees & Taxes

Association Fee: 625

Miscellaneous

Association Fee Frequency: Monthly **List Office Name:** Miami International RealEstate

Listing Terms: Cash,Conventional

Miscellaneous



**Above Grade
Finished Area:**
Hallandale Beach,
FL

Virtual Tour URL:
<https://www.propertypanorama.com/instaview/mia/A11690747>

Courtesy of

Office Name: Miami International RealEstate

