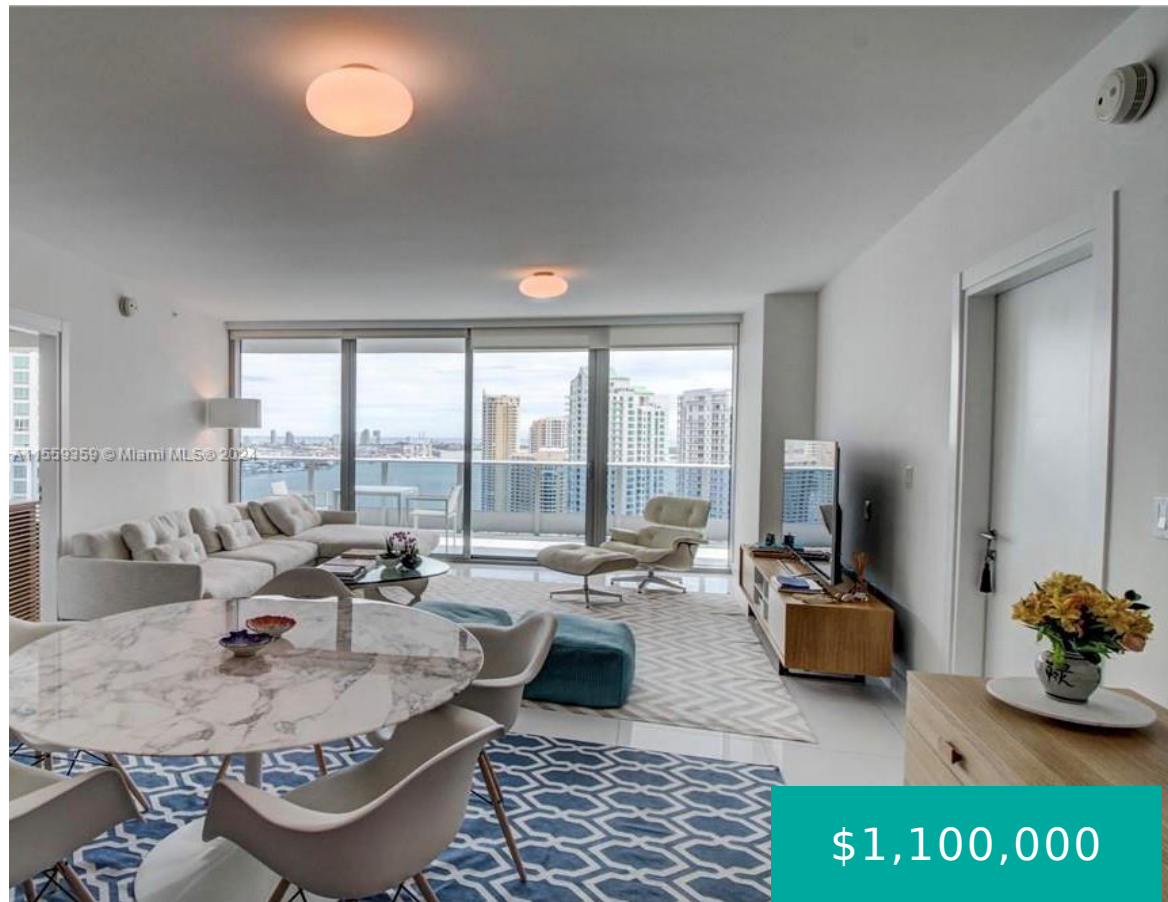
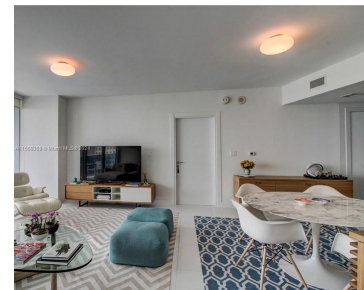


200 BISCAYNE BOULEVARD WAY 3503 MIAMI FL 33131

<https://www.cays.com>



\$1,100,000



Spectacular 2/2.5 featuring floor-to-ceiling glass windows, Bosch front-loading washer and dryer, recessed lighting, imported Italian doors and door hardware, Snaidero "Time" cabinetry, Miele dishwasher, Miele electric oven and cooktop, Sub-Zero refrigerator/freezer paneled with Snaidero cabinetry, garbage disposal, and a private balcony with glass railings. Located where the Miami River meets Biscayne Bay, Epic Miami offers [...]

- 2 beds
- 3 baths
- Condominium
- Residential
- Active
- 1255 sq ft

Basics

Bathrooms Half: 1

Lot Size Units: Square Feet

Type: Condominium

Bedrooms: 2 beds

Area: 1255 sq ft

Bathrooms Full: 2

Category: Residential

Status: Active

Bathrooms: 3 baths

Year built: 2008



Property details

Total Building Area: 1255

Subdivision Name: EPIC WEST CONDO

Parcel Number: 01-42-06-068-0710

Possession: Other

Property Features

Exterior Features: Balcony

Interior Features: Bedroom on Main Level,First Floor Entry,Living/Dining Room,Central Vacuum

Waterfront Features: Bay Front

Window Features: Sliding

Pool Features: Association,Heated

Parking Features: Assigned,Attached,Garage,One Space

Security Features: Door Man,Key Card Entry

Appliances: Built-In Oven,Dryer,Dishwasher,Electric Range,Microwave,Refrigerator,Washer

Architectural Style: High Rise

Association Amenities: Marina,Business Center,Cabana,Elevator(s),Fitness Center,Pool,Spa/Hot Tub,Trash

Construction Materials: Block

Cooling: Central Air

Cooling Y/N: 1

Covered Spaces: 1

Flooring: Concrete

Garage Spaces: 1

Garage Y/N: 1

Heating: Central

Heating Y/N: 1

Pets Allowed: Size Limit,Yes

View: Bay,River

View Y/N: 1

Entry Level: 35

Entry Location: 35

Patio and Porch Features: Balcony,Open

Property Attached Y/N: 1

Waterfront Y/N: 1

Attached Garage Y/N: 1

Rooms & Units Description

Unit Number: 3503



Location Details

County Or Parish: Miami-Dade County

Fees & Taxes

Tax Annual Amount: 13637

Tax Year: 2023

Tax Legal Description: EPIC WEST
CONDO UNIT 3503 UNDIV 0.2747% INT IN
COMMON ELEMENTS OFF REC
26683-3040

Association Fee: 1125

Association Fee Frequency: Monthly

Association Fee Includes: Association
Management,Cable TV,Hot Water,Insurance,Pest
Control,Security,Trash,Water

Miscellaneous

Public Survey Township: 1

**Public
Survey
Section:** 6

Syndication Remarks: Located where the Miami River meets Biscayne Bay, Epic Miami offers majestic views of the Miami River, Biscayne Bay, Atlantic Ocean, and city skyline.

**Year Built
Details:**
Resale

Virtual Tour URL: <https://www.propertypanorama.com/instaview/mia/A11559359>

Courtesy of

Office Name: One Sotheby's International Realty

