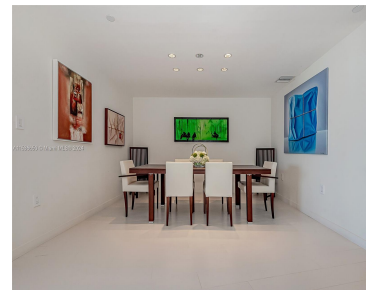


200 BISCAYNE BOULEVARD WAY 3907 MIAMI FL 33131

<https://www.cays.com>



\$1,250,000

Spectacular two bedroom, two and a half bath split plan unit. Dining room +den space total interior 1,598 sq.ft. per developer's floor plan. High floor, amazing direct water views and city views. Ideally situation between downtown Miami and Brickell City Center. Walk to Whole Foods, theaters, restaurants. Adjacent to 1st class Kimpton Hotel w/ full [...]

- 2 beds
- 3 baths
- Condominium
- Residential
- Active
- 1500 sq ft

Basics

Bathrooms Half: 1

Lot Size Units: Square Feet

Type: Condominium

Bedrooms: 2 beds

Area: 1500 sq ft

Bathrooms Full: 2

Category: Residential

Status: Active

Bathrooms: 3 baths

Year built: 2008



Property details

Builder Model: 09

Direction Faces: East

Parcel Number: 01-42-06-068-1750

Total Building Area: 1500

Subdivision Name: EPIC WEST CONDO

Possession: Close Of Escrow

Property Features

Exterior Features: Balcony,Security/High Impact Doors

Waterfront Features: Bay Front,River Front

Parking Features: Attached,Covered,Garage,One Space,Valet

Appliances: Built-In Oven,Dryer,Dishwasher,Electric Range,Electric Water Heater,Disposal,Microwave,Refrigerator,Washer

Association Amenities: Elevator(s)

Cooling: Central Air

Covered Spaces: 1

Furnished: Unfurnished

Garage Y/N: 1

Heating Y/N: 1

View: Bay

Entry Level: 39

Patio and Porch Features: Balcony,Open

Waterfront Y/N: 1

Stories Total: 54

Interior Features: Bedroom on Main Level,Walk-In Closet(s),Elevator

Window Features: Blinds,Impact Glass

Security Features: Door Man,Elevator Secured,Fire Sprinkler System

Architectural Style: High Rise

Construction Materials: Block

Cooling Y/N: 1

Flooring: Ceramic Tile

Garage Spaces: 1

Heating: Central,Electric

Pets Allowed: Size Limit,Yes

View Y/N: 1

Entry Location: 39

Property Attached Y/N: 1

Attached Garage Y/N: 1

Utilities: Cable Available

Rooms & Units Description



Unit Number: 3907

Location Details

County Or Parish: Miami-Dade County **Directions:** Use GPS, downtown Miami on the Water

Fees & Taxes

Tax Annual Amount: 10757

Tax Year: 2024

Tax Legal Description: EPIC WEST CONDO UNIT 3907
UNDIV 0.3286% INT IN COMMON ELEMENTS OFF REC
26683-3040

Association Fee: 8050

Association Fee Frequency: Quarterly

Association Fee Includes:
Amenities

Miscellaneous

Public Survey Township: 1

Public Survey Section: 6

Syndication Remarks: Two bedrooms, two and half bath high-rise great east exposure water views.

Year Built Details: Resale

Courtesy of

Office Name: Fortune Christie's International Real Estate

