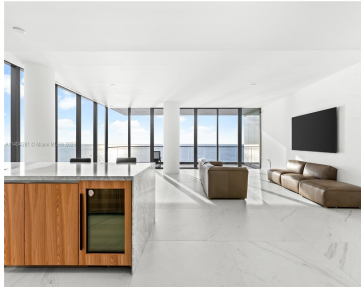
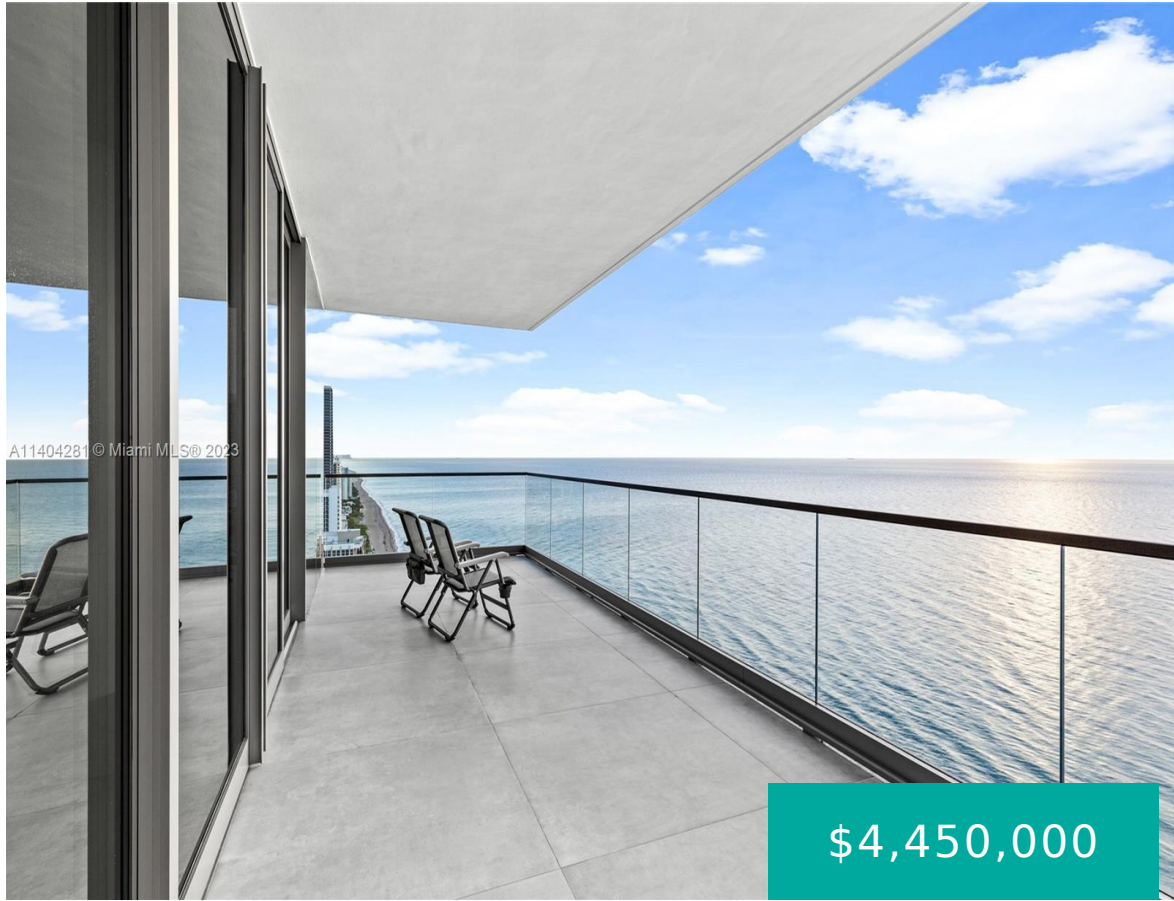


2000 S OCEAN DR 27A HALLANDALE BEACH FL 33009

<https://www.cays.com>



Situated just north of the beautiful Golden Beach in South Florida, 2000 Ocean stands as a modern, 38-story glass tower that presents captivating, panoramic views of the Atlantic Ocean, Intracoastal Waterway, and the vast surrounding sandy beaches. Residence 27A at 2000 Ocean is a luxurious half-floor corner home featuring 3 bedrooms plus a Den, 3.5 [...]

- 3 beds
- 4 baths
- Condominium
- Residential
- Active
- 2913 sq ft

Basics

Bathrooms Half: 1

Lot Size Units: Square Feet

Type: Condominium

Bedrooms: 3 beds

Area: 2913 sq ft

Bathrooms Full: 3

Category: Residential

Status: Active

Bathrooms: 4 baths

Year built: 2022



Property details

Total Building Area: 2913

Subdivision Name: 2000 OCEAN CONDO

Possession: Closing & Funding

Direction Faces: North

Parcel Number: 514226JD0420

Property Condition: Updated/Remodeled

Property Features

Exterior Features: Balcony,Courtyard,Security/High Impact Doors

Laundry Features: Washer Hookup,Dryer Hookup

Window Features: Impact Glass

Parking Features: Covered,Two or More Spaces,Valet

Appliances: Dryer,Dishwasher,Electric Range,Electric Water Heater,Ice Maker,Microwave,Refrigerator,Self Cleaning Oven,Washer

Association Amenities: Cabana,Clubhouse,Fitness Center,Pool,Spa/Hot Tub,Trash,Elevator(s)

Cooling: Central Air

Covered Spaces: 2

Flooring: Marble

Garage Spaces: 2

Heating: Central

New Construction Y/N: 1

View: Intercoastal,Ocean,Water

Entry Level: 27

Patio and Porch Features: Balcony,Open

Waterfront Y/N: 1

Utilities: Cable Available

Interior Features: Built-in Features,Bedroom on Main Level,Closet Cabinetry,Living/Dining Room,Main Living Area Entry Level,Walk-In Closet(s),Elevator

Waterfront Features: Intracoastal Access,Ocean Access,Ocean Front

Pool Features: Association,Heated

Security Features: Elevator Secured,Key Card Entry,Lobby Secured,Fire Sprinkler System,Smoke Detector(s)

Architectural Style: High Rise

Construction Materials: Block

Cooling Y/N: 1

Electric: Fuses

Furnished: Unfurnished

Garage Y/N: 1

Heating Y/N: 1

Pets Allowed: Conditional,Yes

View Y/N: 1

Entry Location: 27

Property Attached Y/N: 1

Stories Total: 38



Rooms & Units Description

Unit Number: 27A

Number of Units in the Community: 64

Location Details

County Or Parish: Broward County

Fees & Taxes

Tax Annual Amount: 1736

Tax Year: 2022

Tax Legal Description: 2000
OCEAN CONDO UNIT
27A PER CDO CIN
#117836215

Association Fee: 3418

Association Fee Frequency: Monthly

Association Fee Includes: Association Management,Amenities,Common Areas,Hot Water,Insurance,Maintenance Grounds,Maintenance Structure,Parking,Pool(s),Sewer,Security,Trash,Water

Miscellaneous

Development Status: New Construction

Public Survey Section: 26

Syndication Remarks: Luxurious half-floor corner home at 2000 Ocean with 3B + Den, 3.5BA, 10-ft ceilings, private elevator, and breathtaking views. Full amenity package.

Year Built Details: Resale

Virtual Tour URL: <https://youtu.be/dvmcHHP2he0>

Courtesy of



Office Name: Compass Florida, LLC.

