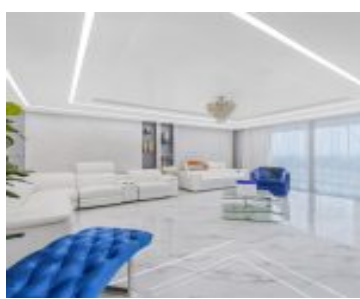


2030 OCEAN DR HALLANDALE BEACH FL 33009 2030 S OCEAN DR 2127

<https://www.cays.com>



PARKER PLAZA CONDO ESTATES UNIT 2127 PER CDO BK/PG:4318/273 MUST SEE . FULLY REMODELED APARTMENT ON THE OCEAN. DESIGNER USED THE BEST QUALITY MATERIALS TO THE PERFECT TASTE OF THE OWNERS. THIS CONDO IS A PERFECTION FROM EVERY PERSPECTIVE . OPEN SPACE, VERY CONVENIENT KITCHEN LAYOUT , ALL CUSTOM MADE CLOSETS , BATHROOMS . IF [...]

- 3 beds
- 2, 3 baths
- Condominium, Residential
- Condominium, Residential
- Active
- 1856 sq ft

Basics



Bathrooms Half: 1

Category: Condominium, Residential

Type: Condominium, Residential **Status:** Active

Bedrooms: 3 beds

Bathrooms: 2, 3 baths

Half baths: 1 half bath

Floors: 27 floors

Area: 1856 sq ft

Year built: 1970

View: Intercoastal

Subdivision Name: PARKER PLAZA CONDO ESTATE

County: Broward

Property details

Subdivision Name: PARKER PLAZA CONDO ESTATE

Parcel Number: 33009

Property Features

Parking Features: TwoOrMoreSpaces

Cooling Y/N: 1

Heating: Central

Pets Allowed: Conditional,Yes

Stories Total: 27

Cooling: Electric

Garage Y/N: 1

Heating Y/N: 1

View: Intercoastal

Rooms & Units Description

Unit Number: 2127

Location Details

County Or Parish: Broward

Middle/Junior School: Gulfstream

Elementary School: Hallandale Elem

High School: Hallandale High



Building Details

Construction Materials: Block

Garage Spaces: 2

Covered Spaces: 2

Floor covering: Marble, Tile

Amenities & Features

Pool Features: Association,Heated

Security Features: DoorMan,LobbySecured,Other

Association Amenities:

BilliardRoom,BusinessCenter,Clubhouse,FitnessCenter,Library,Pool,Sauna,SpaHotTub,Trash,Elevators

Exterior Features: Balcony,SecurityHighImpactDoors

Interior Features: Elevator,FamilyDiningRoom

Parking Features:

TwoOrMoreSpaces

Patio & Porch

Features: Balcony,Open

Cooling: Electric

Heating: Central

Appliances:

Dryer,Dishwasher,Washer

Nearby Schools

Middle Or Junior School: Gulfstream

High School: Hallandale High

Elementary School: Hallandale Elem

Expenses, Fees & Taxes

Association Fee: \$850

Tax Year: 2022

Tax Annual Amount: \$13,497

Fees & Taxes

Association Fee: 850

Miscellaneous



Association Fee Frequency: Monthly

List Office Name: New Level Corp

Listing Terms: Cash,Conventional,Exchange1031

Miscellaneous

Above Grade

Virtual Tour URL:

Finished Area:
Hallandale Beach,
FL

<https://www.propertypanorama.com/instaview/mia/A11511614>

Courtesy of

Office Name: New Level Corp

