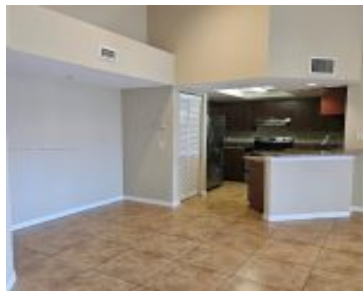


2033 10TH AVE FORT LAUDERDALE FL 33316 2033 SE 10TH AVE 610

<https://www.cays.com>



\$345,000



VILLAGE EAST CONDO UNIT 610 BLDG 6 PER CDO BK/PG: 41670/31 Welcome to Village East, a gated community featuring charming garden-style condos within walking distance of Harbor Shops and vibrant shopping and dining options along the 17th Street Causeway. This freshly painted, spacious 2-bedroom, 2-bath condo on the 3rd floor offers vaulted ceilings, a split [...]

- 2 beds
- 2, 2 baths
- Condominium, Residential
- Condominium, Residential
- Active
- 1054 sq ft

Basics



Category: Condominium, Residential
Status: Active
Bathrooms: 2, 2 baths
Floors: 3 floors
Year built: 2000
Subdivision Name: VILLAGE EAST CONDO

Type: Condominium, Residential
Bedrooms: 2 beds
Half baths: 0 half baths
Area: 1054 sq ft
View: Garden
County: Broward

Property details

Subdivision Name: VILLAGE EAST CONDO

Parcel Number: 33316

Property Features

Building Features: ExteriorLighting
Cooling: CentralAir,CeilingFans
Heating: Central
Pets Allowed: DogsOk,Yes
Stories Total: 3

Parking Features: Assigned,Guest,OneSpace
Cooling Y/N: 1
Heating Y/N: 1
View: Garden

Rooms & Units Description

Unit Number: 610

Location Details

County Or Parish: Broward

Directions: FROM US1 TURN EAST ON SE 17th. STREET. TURN RIGHT ON SE 10th. AVENUE (OUTBACK STEAKHOUSE) - VILLAGE EAST IS LOCATED AT THE END OF THE ROAD.

Elementary School:
Harbordale



Building Details

Construction Materials: Block,Stucco

Amenities & Features

Pool Features: Association

Security Features:

ComplexFenced,PhoneEntry,SmokeDetectors

Association Amenities:

FitnessCenter,Barbecue,PicnicArea,Pool,VehicleWashArea

Exterior Features: Balcony

Features: ExteriorLighting

Appliances:

Dryer,Dishwasher,ElectricRange,Microwave,Refrigerator,Washer

Parking Features: Assigned,Guest,OneSpace

Patio & Porch Features: Balcony,Open

Cooling: CentralAir,CeilingFans

Heating: Central

Interior Features:

BedroomOnMainLevel,LivingDiningRoom,ThirdFloorEntry

Nearby Schools

Elementary School: Harbordale

Expenses, Fees & Taxes

Association Fee: \$673

Tax Year: 2024

Tax Annual Amount: \$5,931

Fees & Taxes

Association Fee: 673

Miscellaneous



Association Fee Frequency: Monthly **List Office Name:** Global Luxury Realty LLC

Listing Terms: Cash,Conventional

Miscellaneous

Above Grade

Virtual Tour URL:

Finished Area:

<https://www.propertypanorama.com/instaview/mia/A11691924>

Fort Lauderdale, FL

Courtesy of

Office Name: Global Luxury Realty LLC

