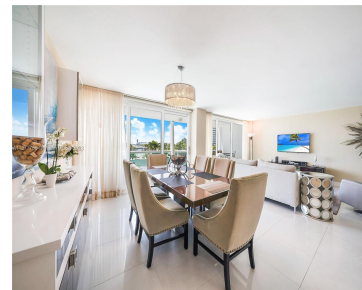
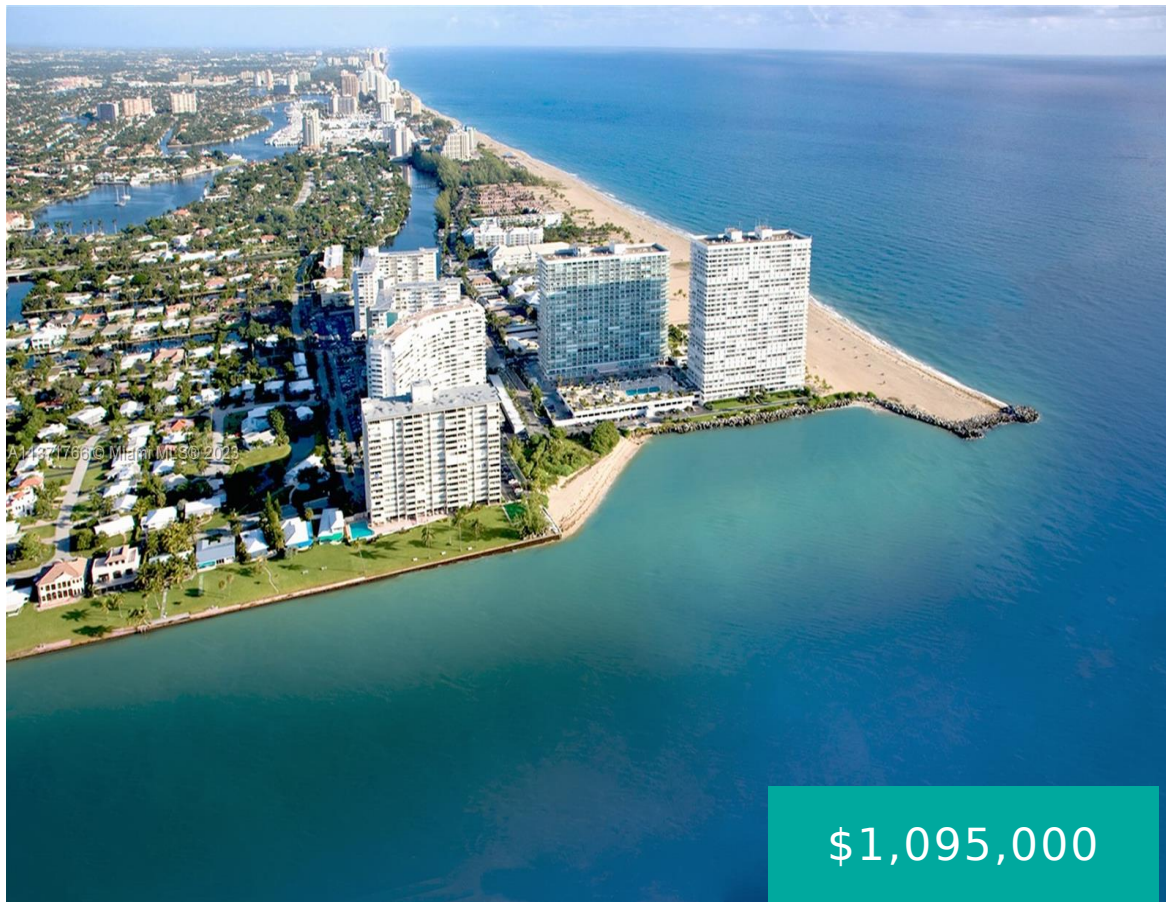


2100 S OCEAN LN 207 FORT LAUDERDALE FL 33316

<https://www.cays.com>



Fully renovated and modern designer thru model offers direct inlet and ocean views south to Miami plus ocean and beach views facing north. Enjoy the cruise ships and the boats in the inlet from the floor to ceiling impact windows in all rooms and from the dual oversized terraces. Features include impact glass sliders, fine [...]

- 2 beds
- 2 baths
- Condominium
- Residential
- Active
- 2116 sq ft

Basics

Bathrooms Full: 2

Category: Residential

Status: Active

Bathrooms: 2 baths

Year built: 1969

Lot Size Units: Square Feet

Type: Condominium

Bedrooms: 2 beds

Area: 2116 sq ft



Property details

Builder Model: THRU MODEL

Direction Faces: South

Subdivision Name: POINT OF AMERICAS CONDO

Possession: Closing & Funding

Total Building Area: 2116

Disclosures: Special Assessment

Parcel Number: 504213AD0120

Property Features

Exterior Features: Privacy Wall, Storm/Security Shutters, Security/High Impact Doors

Waterfront Features: Ocean Front

Pool Features: Heated

Security Features: Closed Circuit Camera(s), Lobby Secured, Security Guard, Smoke Detector(s)

Architectural Style: High Rise

Construction Materials: Block

Cooling Y/N: 1

Flooring: Tile

Garage Spaces: 1

Heating: Central, Electric

Pets Allowed: No

View Y/N: 1

Entry Location: 2

Waterfront Y/N: 1

Stories Total: 25

Interior Features: Breakfast Bar, Built-in Features, Bedroom on Main Level, Closet Cabinetry, Dual Sinks, Entrance Foyer, Living/Dining Room, Separate Shower, Walk-In Closet(s), Bar

Window Features: Impact Glass

Parking Features: Assigned, Attached, Garage, Guest, One Space

Appliances: Dryer, Dishwasher, Electric Range, Electric Water Heater, Disposal, Microwave, Refrigerator, Self Cleaning Oven, Washer

Association Amenities: Bike Storage, Clubhouse, Fitness Center, Library, Barbecue, Picnic Area, Pool, Shuffleboard Court, Sauna, Storage, Trash, Vehicle Wash Area, Elevator(s)

Cooling: Central Air, Electric

Covered Spaces: 1

Furnished: Unfurnished

Garage Y/N: 1

Heating Y/N: 1

View: Ocean

Entry Level: 2

Property Attached Y/N: 1

Attached Garage Y/N: 1

Utilities: Cable Available



Rooms & Units Description

Unit Number: 207

Number of Units in the Community: 597

Location Details

County Or Parish:
Broward County

Directions: SEABREEZE BLVD (A1A) to EAST ON MAYAN DRIVE. LEFT ON GRACE DRIVE, RIGHT ON SOUTH OCEAN LANE TO POINT OF AMERICAS GATEHOUSE.

Fees & Taxes

Tax Annual Amount: 19102 **Tax Year:** 2022

Tax Legal Description: POINT OF AMERICAS CONDO UNIT 207
Association Fee: 2204

Association Fee Frequency: Monthly

Association Fee Includes: Association Management,Amenities,Common Areas,Cable TV,Internet,Maintenance Grounds,Maintenance Structure,Pest Control,Pool(s),Reserve Fund,Sewer,Security,Trash,Water

Miscellaneous

Public Survey Township: 50

Public Survey Section: 13

Syndication Remarks: Fully renovated and modern designer thru model offers direct inlet and ocean views south to Miami plus ocean and beach views facing north.

Year Built Details:
Resale

Virtual Tour URL: <https://www.propertypanorama.com/instaview/mia/A11371766>

Courtesy of



Office Name: One Sotheby's Int'l Realty

